

ADAP Antibody

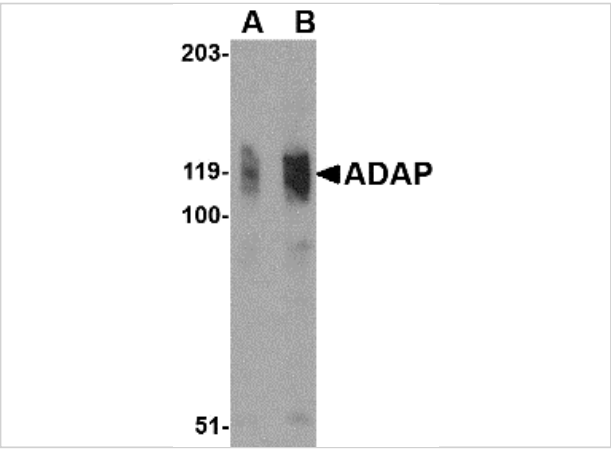
CATALOG NUMBER: 4279

Specifications

Host Species	Rabbit
Species Reactivity	Human
Immunogen	ADAP antibody was raised against a 17 amino acid synthetic peptide from near the amino terminus of human ADAP. The immunogen is located within amino acids 60 - 110 of ADAP.
Conjugate	Unconjugated
Tested Applications	ELISA, ICC, IF, WB
User Note	Optimal dilutions for each application to be determined by the researcher.

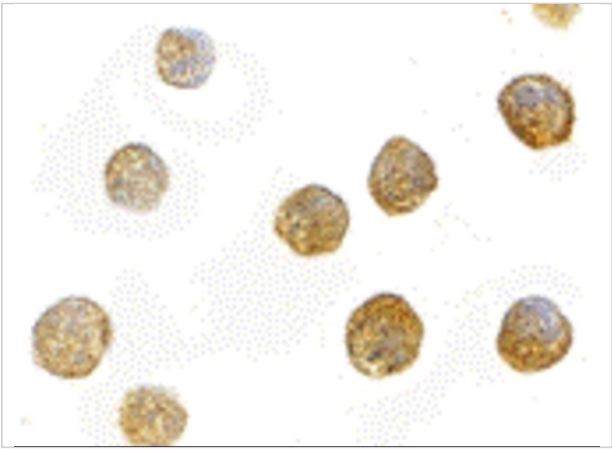
Properties

Purification	ADAP Antibody is affinity chromatography purified via peptide column.
Clonality	Polyclonal
Isotype	IgG
Physical State	Liquid
Buffer	ADAP Antibody is supplied in PBS containing 0.02% sodium azide.
Concentration	1 mg/mL
Storage Conditions	ADAP antibody can be stored at 4°C for three months and -20°C, stable for up to one year. As with all antibodies care should be taken to avoid repeated freeze thaw cycles. Antibodies should not be exposed to prolonged high temperatures.



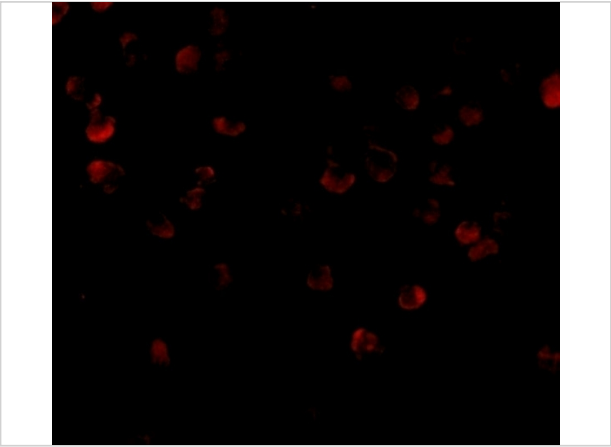
ADAP Antibody 1

Western blot analysis of ADAP in K562 cell lysate with ADAP antibody at (A) 0.5 and (B) 1 µg/mL.



ADAP Antibody 2

Immunocytochemistry of ADAP in K562 cells with ADAP antibody at 10 µg/mL.



ADAP Antibody 3

Immunofluorescence of ADAP in K562 cells with ADAP antibody at 20 µg/mL.

Disclaimer

Disclaimer	Optimal dilutions/concentrations should be determined by the end user. The information provided is a guideline for product use. This product is for research use only.
------------	------------------------------------------------------------------------------------------------------------------------------------------------------------------------

For research use only. For additional information, visit ProSci's [Terms and Conditions Page](#).