

FABP7 Antibody

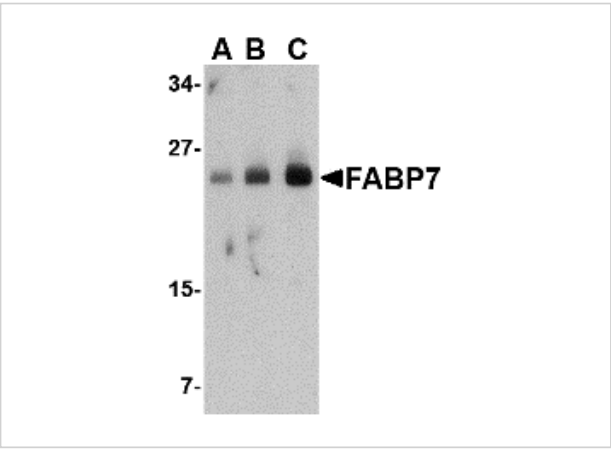
CATALOG NUMBER: 4259

Specifications

Host Species	Rabbit
Species Reactivity	Human
Homology	Predicted species reactivity based on immunogen sequence: Bovine: (100%), Chicken: (94%), Rat: (94%), Mouse: (88%)
Immunogen	FABP7 antibody was raised against a 17 amino acid synthetic peptide from near the center of human FABP7. The immunogen is located within the last 50 amino acids of FABP7.
Conjugate	Unconjugated
Tested Applications	ELISA, IHC-P, WB
User Note	Optimal dilutions for each application to be determined by the researcher.

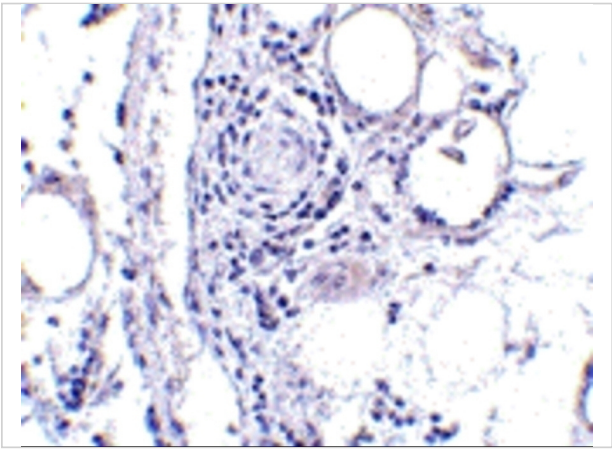
Properties

Purification	FABP7 Antibody is affinity chromatography purified via peptide column.
Clonality	Polyclonal
Isotype	IgG
Physical State	Liquid
Buffer	FABP7 Antibody is supplied in PBS containing 0.02% sodium azide.
Concentration	1 mg/mL
Storage Conditions	FABP7 antibody can be stored at 4°C for three months and -20°C, stable for up to one year. As with all antibodies care should be taken to avoid repeated freeze thaw cycles. Antibodies should not be exposed to prolonged high temperatures.



FABP7 Antibody 1

Western blot analysis of FABP7 in human breast tissue lysate with FABP7 antibody at (A) 0.5, (B) 1 and (C) 2 $\mu\text{g/mL}$.



FABP7 Antibody 2

Immunohistochemistry of FABP7 in human breast tissue with FABP7 antibody at 5 $\mu\text{g/mL}$.

Disclaimer

Disclaimer	Optimal dilutions/concentrations should be determined by the end user. The information provided is a guideline for product use. This product is for research use only.
------------	--

For research use only. For additional information, visit ProSci's [Terms and Conditions Page](#).