

SLPI Antibody

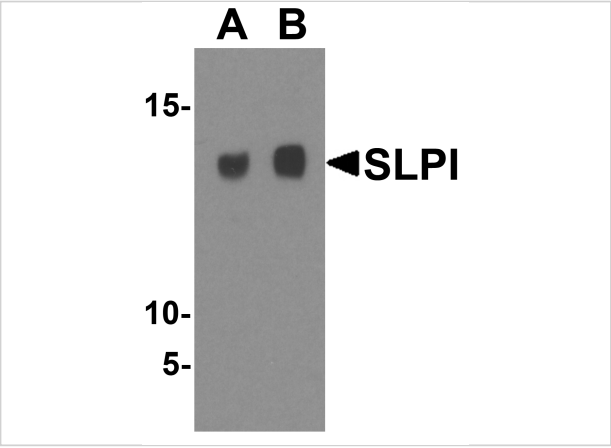
CATALOG NUMBER: 4251

Specifications

Host Species	Rabbit
Species Reactivity	Mouse
Immunogen	SLPI antibody was raised against a 17 amino acid synthetic peptide from near the center of mouse SLPI. The immunogen is located within amino acids 60 - 110 of SLPI.
Conjugate	Unconjugated
Tested Applications	ELISA, WB
User Note	Optimal dilutions for each application to be determined by the researcher.

Properties

Purification	SLPI Antibody is affinity chromatography purified via peptide column.
Clonality	Polyclonal
Isotype	IgG
Physical State	Liquid
Buffer	SLPI Antibody is supplied in PBS containing 0.02% sodium azide.
Concentration	1 mg/mL
Storage Conditions	SLPI antibody can be stored at 4°C for three months and -20°C, stable for up to one year. As with all antibodies care should be taken to avoid repeated freeze thaw cycles. Antibodies should not be exposed to prolonged high temperatures.



SLPI Antibody 1

Western blot analysis of SLPI in A-20 cell lysate with SLPI antibody at (A) 1 and (B) 2 µg/mL.

Disclaimer

Disclaimer	Optimal dilutions/concentrations should be determined by the end user. The information provided is a guideline for product use. This product is for research use only.
------------	--

For research use only. For additional information, visit ProSci's [Terms and Conditions Page](#).