



ProSci Incorporated
12170 Flint Place
Poway, CA 92064, USA
prosci-inc.com

P: +1 (888) 513-9525
Local: +1 (858) 513-2638
Fax: +1 (858) 513-2692

customercare@prosci-inc.com
techsupport@prosci-inc.com

SARS-CoV-2 (COVID-19) S1 RBD Single Domain Antibody [T5P7-G10]

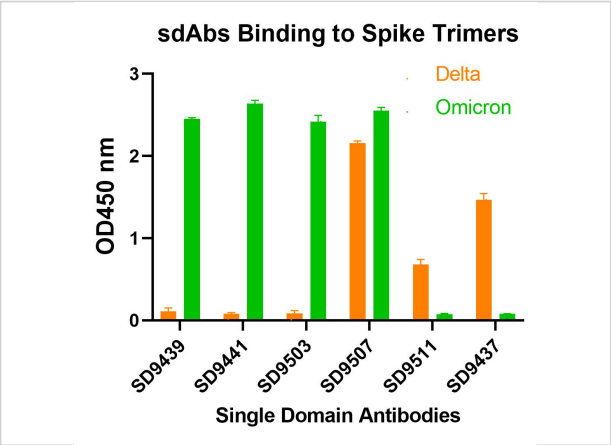
CATALOG NUMBER: SD9441

Specifications

Host Species	Llama
Species Reactivity	Virus
Immunogen	SARS-CoV-2 S protein RBD containing C-terminal His Tag. The protein was expressed in human 293 cells (HEK293). It contains amino acids Arg 319 - Lys 537.
Conjugate	Unconjugated
Tested Applications	ELISA
User Note	Optimal dilutions for each application to be determined by the researcher.

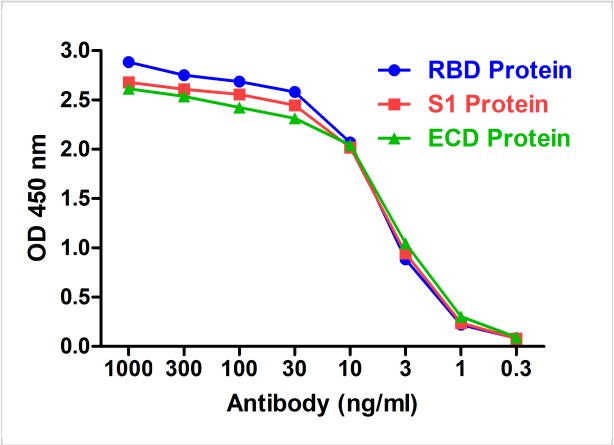
Properties

Purification	SARS-CoV-2 (COVID-19) S1 RBD Antibody [T5P7-G10] is affinity chromatography purified via Nickel column. Antibody is supplied as a His-tagged purified protein. It also contains a myc-tag for detection.
Clonality	Recombinant Monoclonal
Isotype	sdAb
Physical State	Liquid
Buffer	SARS-CoV-2 (COVID-19) S1 RBD Antibody [T5P7-G10] Antibody is supplied in PBS.
Concentration	batch dependent
Storage Conditions	SARS-CoV-2 (COVID-19) S1 RBD antibody should be stored in working aliquots at -20°C, stable for up to one year. As with all antibodies care should be taken to avoid repeated freeze thaw cycles. Antibodies should not be exposed to prolonged high temperatures.



SARS-CoV-2 (COVID-19) S1 RBD Single Domain Antibody [T5P7-G10] 1

Figure 1 ELISA Validation with SARS-CoV-2 (COVID-19) Spike Trimer Proteins of Omicron and Delta Variants
Antibodies: SARS-CoV-2 (COVID-19) Spike S1 RBD Antibodies. A direct ...



SARS-CoV-2 (COVID-19) S1 RBD Antibody [T5P7-G10] 1

Figure 2 ELISA Validation with SARS-CoV-2 (COVID-19) Spike RBD, S1 and ECD Proteins
Antibodies: SARS-CoV-2 (COVID-19) Spike S1 RBD Antibody, SD9441. A direct ELISA was perfo...

Disclaimer

Disclaimer	Optimal dilutions/concentrations should be determined by the end user. The information provided is a guideline for product use. This product is for research use only.
------------	--

For research use only. For additional information, visit ProSci's [Terms and Conditions Page](#).