

LAG-3 Single Domain Antibody [2B11]

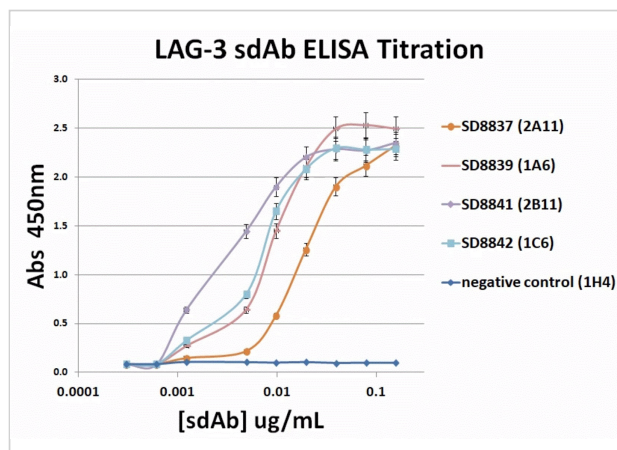
CATALOG NUMBER: SD8841

Specifications

Host Species	Llama
Species Reactivity	Human
Immunogen	LAG3 antibody was raised against a recombinant protein corresponding to amino acids 23-434 of human LAG3.
Conjugate	Unconjugated
Tested Applications	ELISA, Flow, IF, IHC-P
User Note	Optimal dilutions for each application to be determined by the researcher.

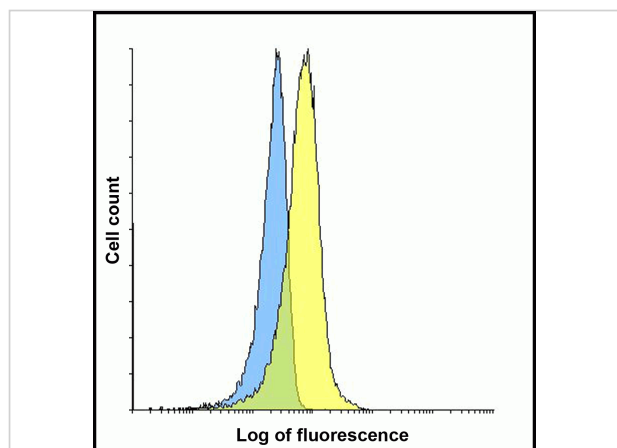
Properties

Purification	LAG3 Antibody is affinity chromatography purified via Nickel column. Antibody is supplied as a His-tagged purified protein. It also contains a myc-tag for detection.
Clonality	Recombinant Monoclonal
Isotype	sdAb
Physical State	Liquid
Buffer	LAG-3 Antibody is supplied in PBS.
Concentration	1 mg/mL
Storage Conditions	LAG3 antibody should be stored in working aliquots at -20°C, stable for up to one year. As with all antibodies care should be taken to avoid repeated freeze thaw cycles. Antibodies should not be exposed to prolonged high temperatures.



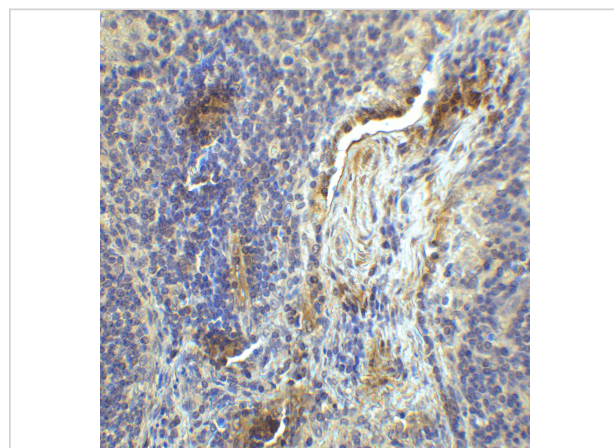
LAG-3 Single Domain Antibody [2B11] 1

Titration ELISA analysis of LAG-3 sdAbs to detect recombinant LAG-3 (extracellular domain) coated at 1 ug/mL. sdAbs are detected with a mouse mAb against a C-terminal myc-tag followed by a goat an...



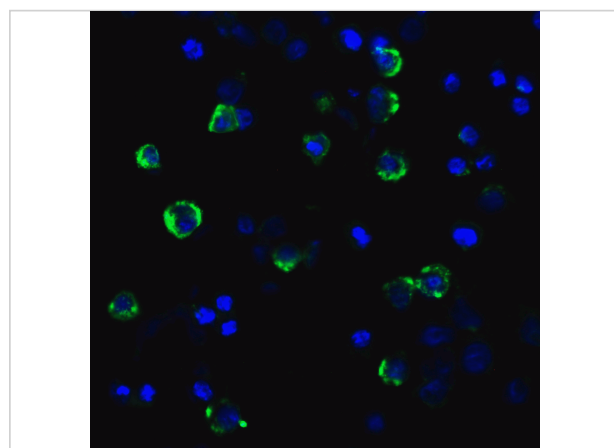
LAG-3 Antibody [2B11] 3

Flow cytometry analysis of LAG-3 overexpressing HEK293 cells using LAG-3 single domain antibody at 1 µg/mL. Blue: Untransfected HEK293 cells. Yellow: LAG-3 overexpressing HEK293 cells.



LAG-3 Antibody [2B11] 2

Immunohistochemistry of LAG-3 in human lymph node tissue with LAG-3 single domain antibody at 1 µg/mL.



LAG-3 Antibody [2B11] 4

Immunofluorescence of LAG-3 in transfected HEK293 cells with LAG-3 single domain antibody at 5 µg/mL.

Disclaimer

Disclaimer

Optimal dilutions/concentrations should be determined by the end user. The information provided is a guideline for product use. This product is for research use only.

For research use only. For additional information, visit ProSci's [Terms and Conditions Page](#).