

## PD-1 Single Domain Antibody [F25F4]

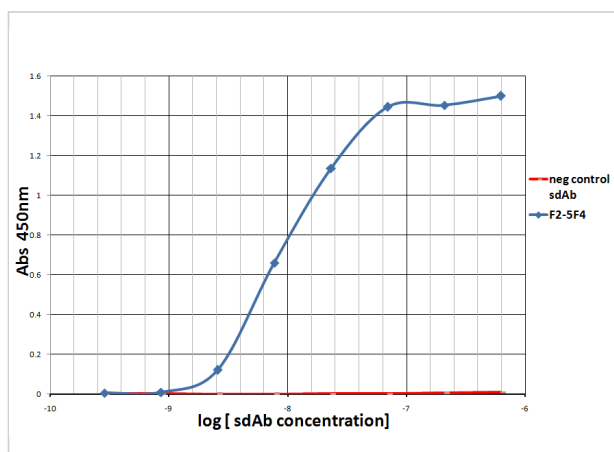
CATALOG NUMBER: SD8649

### Specifications

|                     |   |
|---------------------|---|
| Host Species        | Llama   |
| Species Reactivity  | Human   |
| Immunogen           | PD-1 antibody was raised against a recombinant protein corresponding to amino acids 25 - 167 of human PD-1. |
| Conjugate           | Unconjugated  |
| Tested Applications | ELISA, Flow   |
| User Note           | Optimal dilutions for each application to be determined by the researcher.                                  |

### Properties

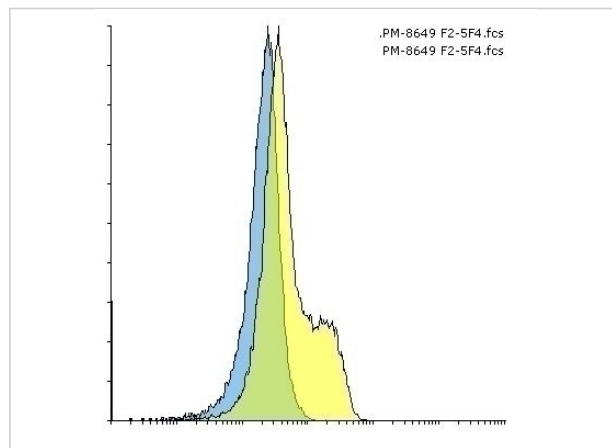
|                    |  |
|--------------------|--|
| Purification       | PD-1 Antibody is affinity chromatography purified via Nickel column. Antibody is supplied as a His-tagged purified protein. It also contains a myc-tag for detection.  |
| Clonality          | Recombinant Monoclonal   |
| Isotype            | sdAb   |
| Physical State     | Liquid   |
| Buffer             | PD-1 Antibody is supplied in PBS.  |
| Concentration      | 1 mg/mL  |
| Storage Conditions | PD-1 antibody should be stored in working aliquots at -20°C, stable for up to one year. As with all antibodies care should be taken to avoid repeated freeze thaw cycles. Antibodies should not be exposed to prolonged high temperatures. |



## PD-1 Single Domain Antibody [F25F4]

1

Titration ELISA of PD-1.



## PD-1 Antibody [F25F4] 2

Flow cytometry analysis of PD-1 transfected 293 cells using PD-1 [F2-5F4] antibody at 10 µg/ml. Blue: untransfected cells, Yellow: PD-1 transfected cells.

## Disclaimer

### Disclaimer

Optimal dilutions/concentrations should be determined by the end user. The information provided is a guideline for product use. This product is for research use only.

For research use only. For additional information, visit ProSci's [Terms and Conditions Page](#).