

op18 Antibody

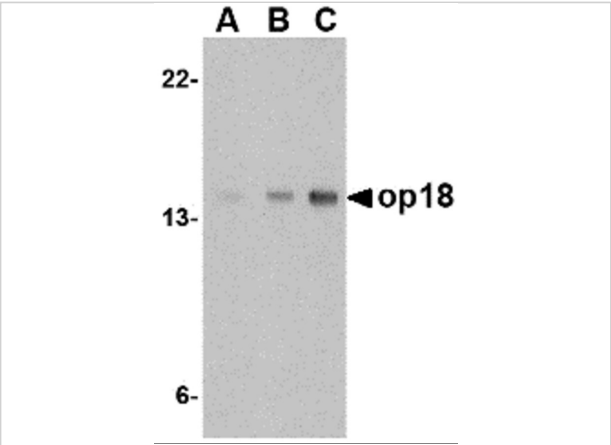
CATALOG NUMBER: 4235

Specifications

| | |
|----------------------------|--|
| Host Species | Rabbit |
| Species Reactivity | Human, Mouse, Rat |
| Homology | Predicted species reactivity based on immunogen sequence: Pig: (100%), Bovine: (100%), Chicken: (95%) |
| Immunogen | Anti-op18 antibody (4235) was raised against a peptide corresponding to 20 amino acids near the carboxy terminus of human op18. The immunogen is located within the last 50 amino acids of op18. |
| Conjugate | Unconjugated |
| Tested Applications | ELISA, IHC-P, WB |
| User Note | Optimal dilutions for each application to be determined by the researcher. |
| Predicted Molecular Weight | Predicted: 17kD Observed: 17 kD |

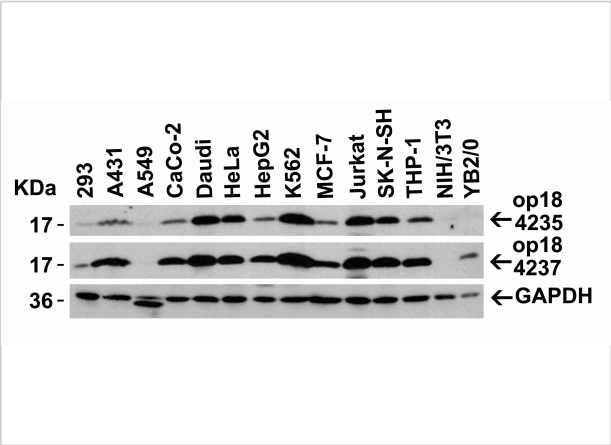
Properties

| | |
|--------------------|--|
| Purification | op18 Antibody is affinity chromatography purified via peptide column. |
| Clonality | Polyclonal |
| Isotype | IgG |
| Physical State | Liquid |
| Buffer | op18 Antibody is supplied in PBS containing 0.02% sodium azide. |
| Concentration | 1 mg/mL |
| Storage Conditions | op18 antibody can be stored at 4°C for three months and -20°C, stable for up to one year. As with all antibodies care should be taken to avoid repeated freeze thaw cycles. Antibodies should not be exposed to prolonged high temperatures. |



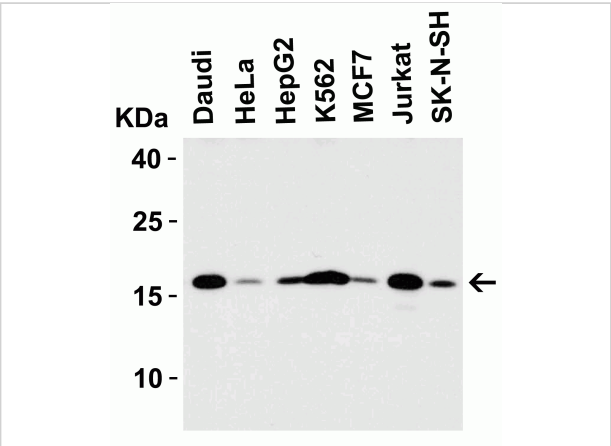
op18 Antibody 1

Figure 1 Western Blot Validation in Mouse EL4 Cell Lines
 Loading: 15 µg of lysates per lane. Antibodies: op18 4235 (A: 0.5 µg/mL, B: 1 µg/mL, C: 2 µg/mL), 1h incubation at RT ...



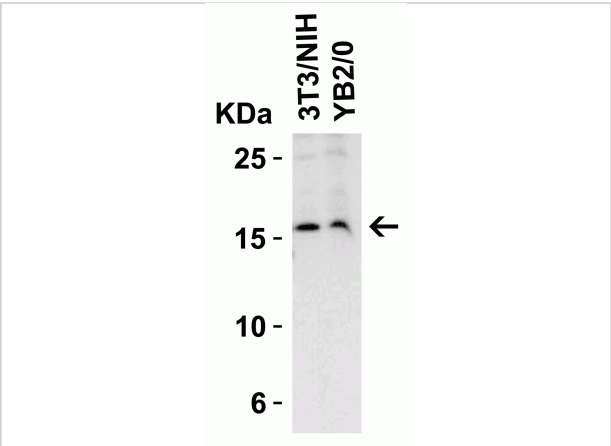
op18 Antibody 2

Figure 2 Independent Antibody Validation (IAV) via Protein Expression Profile in Cell Lines
 Loading: 15 µg of lysates per lane. Antibodies: op18 4235 (2 µg/mL), op18 4237 (2 µg/...



op18 Antibody 3

Figure 3 Western Blot Validation in Human Cell Lines
 Loading: 15 µg of cell lysate per lane. Antibodies: op18 4235 (1 µg/mL), 1h incubation at RT in 5% NFDm/TBST. Secondary: Goat...



op18 Antibody 4

Figure 4 Western Blot Validation in Mouse and Rat Cell Lines
 Loading: 15 µg of lysates per lane. Antibodies: op18 4235 (1µg/mL), 1h incubation at RT in 5% NFDm/TBST. Secondary: ...

Disclaimer

Disclaimer

Optimal dilutions/concentrations should be determined by the end user. The information provided is a guideline for product use. This product is for research use only.