

PD-1 Single Domain Antibody [F12A8]

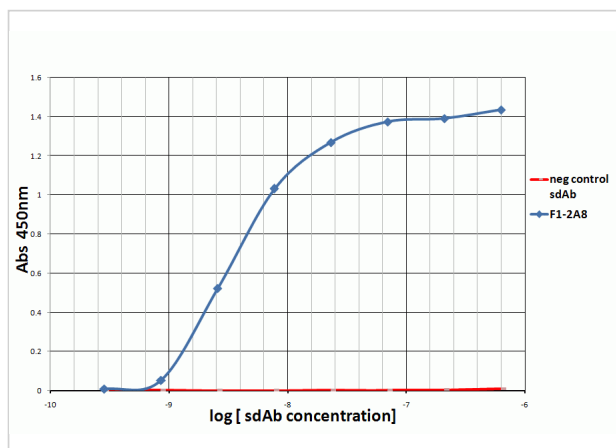
CATALOG NUMBER: SD8643

Specifications

Host Species	Llama
Species Reactivity	Human
Immunogen	PD-1 antibody was raised against a recombinant protein corresponding to amino acids 25 - 167 of human PD-1.
Conjugate	Unconjugated
Tested Applications	ELISA, Flow
User Note	Optimal dilutions for each application to be determined by the researcher.

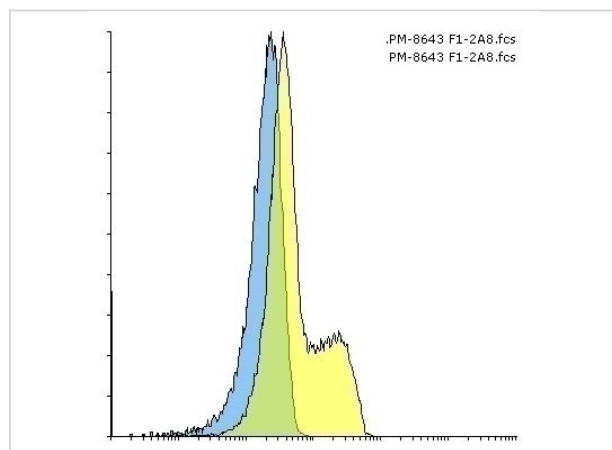
Properties

Purification	PD-1 Antibody is affinity chromatography purified via Nickel column. Antibody is supplied as a His-tagged purified protein. It also contains a myc-tag for detection.
Clonality	Recombinant Monoclonal
Isotype	sdAb
Physical State	Liquid
Buffer	PD-1 Antibody is supplied in PBS.
Concentration	1 mg/mL
Storage Conditions	PD-1 antibody should be stored in working aliquots at -20°C, stable for up to one year. As with all antibodies care should be taken to avoid repeated freeze thaw cycles. Antibodies should not be exposed to prolonged high temperatures.



PD-1 Antibody [F12A8] 1

Titration ELISA of PD-1.



PD-1 Antibody [F12A8] 2

Flow cytometry analysis of PD-1 transfected 293 cells using PD-1 [F1-2A8] antibody at 10 µg/ml. Blue: untransfected cells, Yellow: PD-1 transfected cells.

Disclaimer

Disclaimer

Optimal dilutions/concentrations should be determined by the end user. The information provided is a guideline for product use. This product is for research use only.

For research use only. For additional information, visit ProSci's [Terms and Conditions Page](#).