

## PD-L1 Single Domain Antibody [F6A9]

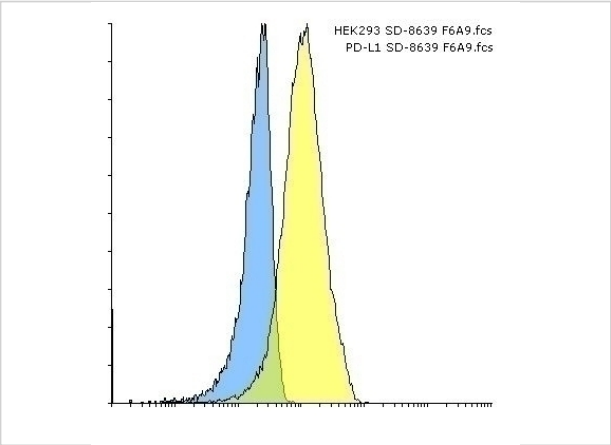
CATALOG NUMBER: SD8639

### Specifications

Host Species	Llama
Species Reactivity	Human
Immunogen	PD-L1 antibody was raised against a recombinant protein corresponding to amino acids 19 - 239 of human PD-L1.
Conjugate	Unconjugated
Tested Applications	Flow, ICC
User Note	Optimal dilutions for each application to be determined by the researcher.
Specificity	At least three isoforms of PD-L1 are known to exist.

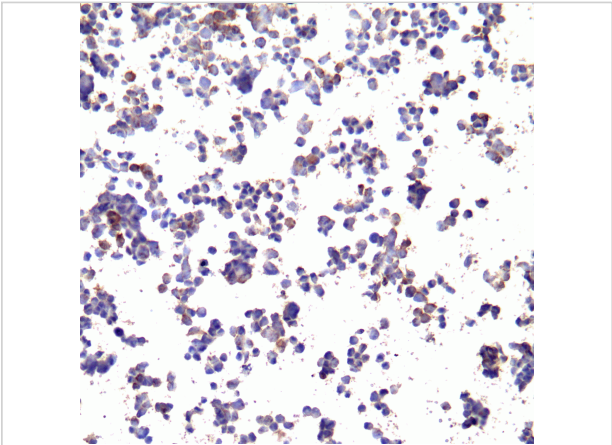
### Properties

Purification	PD-L1 Antibody is affinity chromatography purified via Nickel column. Antibody is supplied as a His-tagged purified protein. It also contains a myc-tag for detection.
Clonality	Recombinant Monoclonal
Isotype	sdAb
Physical State	Liquid
Buffer	PD-L1 Antibody is supplied in PBS.
Concentration	1 mg/mL
Storage Conditions	PD-L1 antibody should be stored in working aliquots at -20°C, stable for up to one year. As with all antibodies care should be taken to avoid repeated freeze thaw cycles. Antibodies should not be exposed to prolonged high temperatures.



PD-L1 Antibody [F6A9] 1

Flow cytometry analysis of PD-L1 transfected 293 cells using PD-L1 [F6A9] antibody at 10 µg/ml. Blue: untransfected cells, Yellow: PD-L1 transfected cells.



PD-L1 Antibody [F6A9] 2

Immunocytochemistry of PD-L1 in transfected 293 cells with PD-L1 antibody at 10 µg/ml.

Disclaimer

Disclaimer	Optimal dilutions/concentrations should be determined by the end user. The information provided is a guideline for product use. This product is for research use only.
------------	--

For research use only. For additional information, visit ProSci's [Terms and Conditions Page](#).