



ProSci Incorporated  
12170 Flint Place  
Poway, CA 92064, USA  
prosci-inc.com

P: +1 (888) 513-9525  
Local: +1 (858) 513-2638  
Fax: +1 (858) 513-2692

customercare@prosci-inc.com  
techsupport@prosci-inc.com

## B7H3 Antibody [2H5]

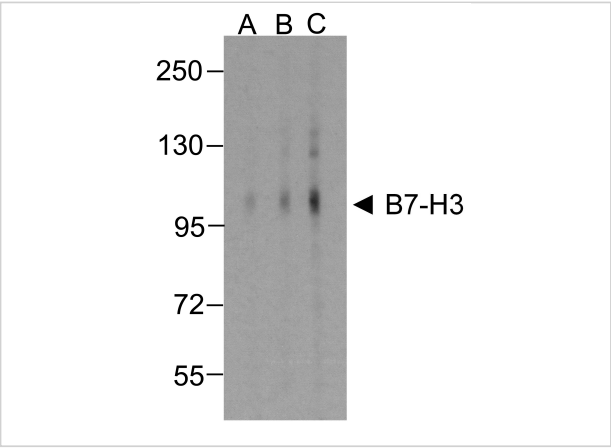
CATALOG NUMBER: RF16091

### Specifications

Host Species	Mouse
Species Reactivity	Human
Immunogen	B7-H3 antibody was raised against the extracellular domain of human B7-H3
Conjugate	Unconjugated
Tested Applications	ELISA, Flow, ICC, IF, IHC-P, WB
User Note	Optimal dilutions for each application to be determined by the researcher.
Predicted Molecular Weight	Predicted: 57 kDa Observed: 100 kDa

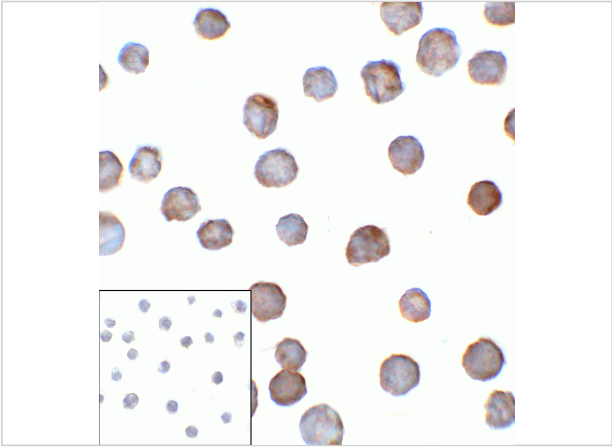
### Properties

Purification	B7-H3 Antibody is supplied as protein A purified IgG1.
Clonality	Monoclonal
Isotype	IgG1,k
Physical State	Liquid
Buffer	B7-H3 Antibody is supplied in PBS containing 0.02% sodium azide and 50% glycerol.
Concentration	1 mg/mL
Storage Conditions	B7-H3 antibody can be stored at 4°C for three months and -20°C, stable for up to one year. As with all antibodies care should be taken to avoid repeated freeze thaw cycles. Antibodies should not be exposed to prolonged high temperatures.



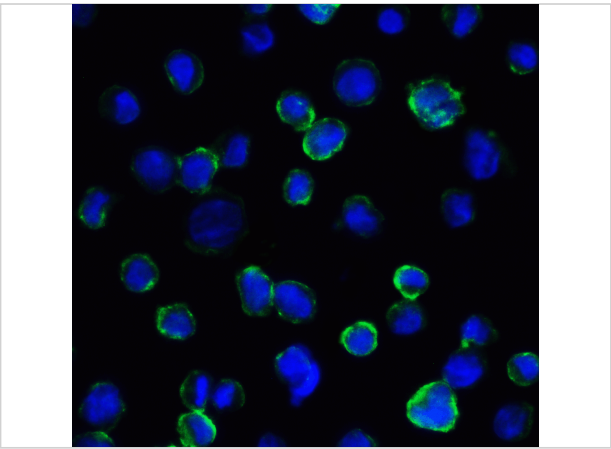
**B7H3 Antibody [2H5] 1**

Western blot analysis of B7-H3 in HEK293 cells using B7-H3 antibody at (A) 0.25 (B) 0.5 and (C) 1 µg/ml.



**B7H3 Antibody [2H5] 2**

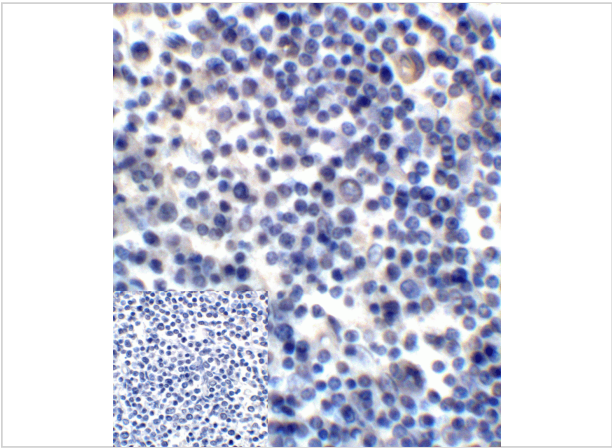
Immunocytochemistry of B7-H3 in HEK293 cells using B7-H3 antibody and control mouse IgG antibody (left corner box) at 1 µg/ml.



**B7H3 Antibody [2H5] 3**

Immunofluorescence of B7-H3 in HEK293 cells using B7-H3 Antibody at 5 µg/ml.

Green: B7-H3 Antibody [2H5] (RF16091)  
Blue: DAPI staining



**B7H3 Antibody [2H5] 4**

Immunohistochemistry of B7-H3 in human colon carcinoma tissue using B7-H3 Antibody and control mouse IgG (corner box) at 2 µg/ml.

**Disclaimer**

<b>Disclaimer</b>	Optimal dilutions/concentrations should be determined by the end user. The information provided is a guideline for product use. This product is for research use only.
-------------------	--

For research use only. For additional information, visit ProSci's [Terms and Conditions Page](#).