



ProSci Incorporated
12170 Flint Place
Poway, CA 92064, USA
prosci-inc.com

P: +1 (888) 513-9525
Local: +1 (858) 513-2638
Fax: +1 (858) 513-2692

customercare@prosci-inc.com
techsupport@prosci-inc.com

LAG3 Antibody [1G4]

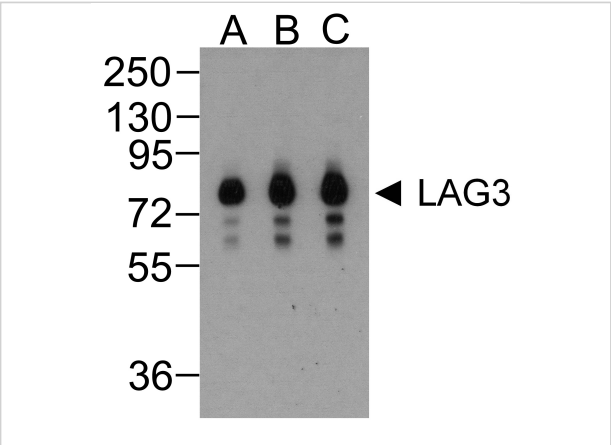
CATALOG NUMBER: RF16089

Specifications

Host Species	Mouse
Species Reactivity	Human
Immunogen	LAG-3 antibody was raised against the extracellular domain of human LAG-3
Conjugate	Unconjugated
Tested Applications	ELISA, Flow, ICC, IF, IHC-P, WB
User Note	Optimal dilutions for each application to be determined by the researcher.
Predicted Molecular Weight	Predicted: 55 kDa Observed: 60, 70, 80 kDa

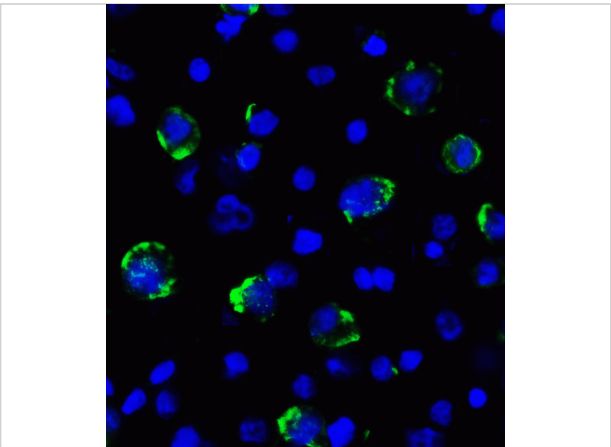
Properties

Purification	LAG-3 Antibody is supplied as protein A purified IgG1.
Clonality	Monoclonal
Isotype	IgG1,k
Physical State	Liquid
Buffer	LAG-3 Antibody is supplied in PBS containing 0.02% sodium azide and 50% glycerol.
Concentration	1 mg/mL
Storage Conditions	LAG-3 antibody can be stored at 4°C for three months and -20°C, stable for up to one year. As with all antibodies care should be taken to avoid repeated freeze thaw cycles. Antibodies should not be exposed to prolonged high temperatures.



LAG3 Antibody [1G4] 1

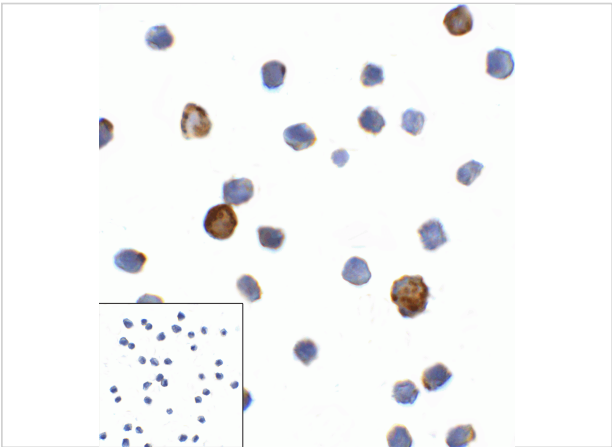
Western blot analysis of LAG-3 in over expressing HEK293 cells using LAG-3 antibody at (A) 0.25 (B) 0.5 and (C) 1 µg/ml.



LAG3 Antibody [1G4] 3

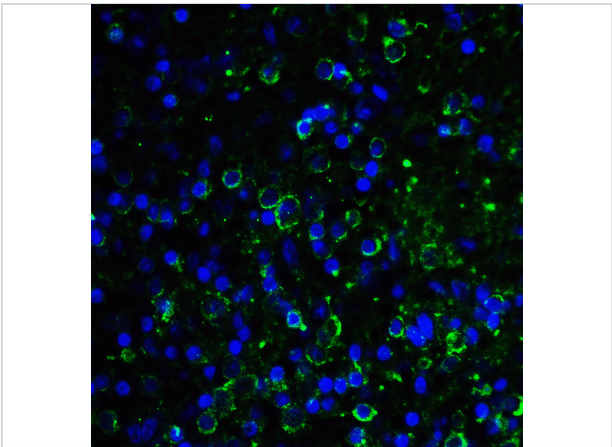
Immunofluorescence of LAG-3 in over expressing HEK293 cells using LAG-3 Antibody at 2 µg/ml.

Green: LAG3 Antibody [1G4] (RF16089)
Blue: DAPI staining



LAG3 Antibody [1G4] 2

Immunocytochemistry of LAG-3 in over expressing HEK293 cells using LAG-3 antibody and control mouse IgG antibody (left corner box) at 1 µg/ml.



LAG3 Antibody [1G4] 4

Immunofluorescence of LAG-3 in over human spleen tissue using LAG-3 Antibody at 10 µg/ml.

Green: LAG3 Antibody [1G4] (RF16089)
Blue: DAPI staining

Disclaimer

Disclaimer	Optimal dilutions/concentrations should be determined by the end user. The information provided is a guideline for product use. This product is for research use only.
-------------------	--

For research use only. For additional information, visit ProSci's [Terms and Conditions Page](#).