



ProSci Incorporated  
12170 Flint Place  
Poway, CA 92064, USA  
prosci-inc.com

P: +1 (888) 513-9525  
Local: +1 (858) 513-2638  
Fax: +1 (858) 513-2692

customercare@prosci-inc.com  
techsupport@prosci-inc.com

## LAG3 Antibody [9F9]

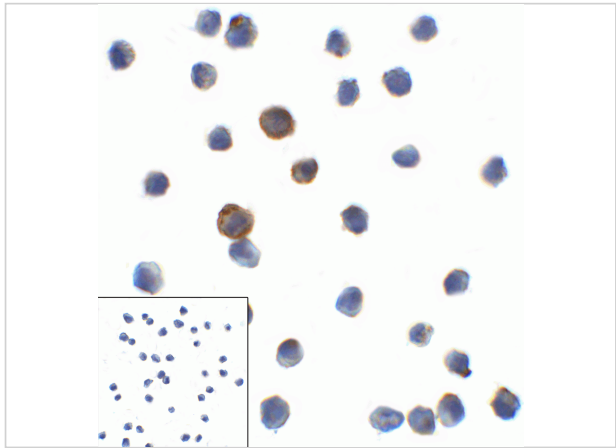
CATALOG NUMBER: RF16084

### Specifications

Host Species	Mouse
Species Reactivity	Human
Immunogen	LAG-3 antibody was raised against the extracellular domain of human LAG-3
Conjugate	Unconjugated
Tested Applications	ELISA, Flow, ICC, IF, IHC-P
User Note	Optimal dilutions for each application to be determined by the researcher.

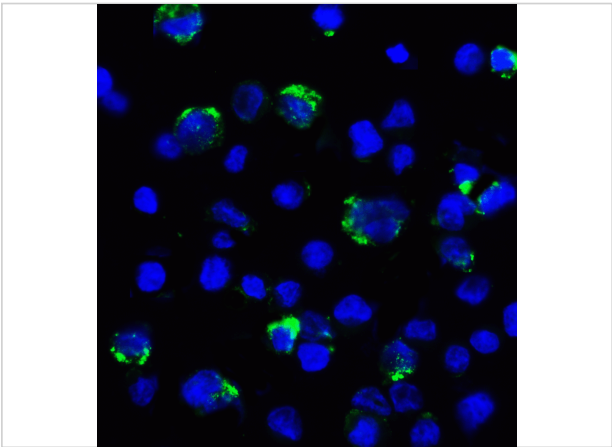
### Properties

Purification	LAG-3 Antibody is supplied as protein A purified IgG2a.
Clonality	Monoclonal
Isotype	IgG2a,k
Physical State	Liquid
Buffer	LAG-3 Antibody is supplied in PBS containing 0.02% sodium azide and 50% glycerol.
Concentration	1 mg/mL
Storage Conditions	LAG-3 antibody can be stored at 4°C for three months and -20°C, stable for up to one year. As with all antibodies care should be taken to avoid repeated freeze thaw cycles. Antibodies should not be exposed to prolonged high temperatures.



### LAG3 Antibody [9F9] 1

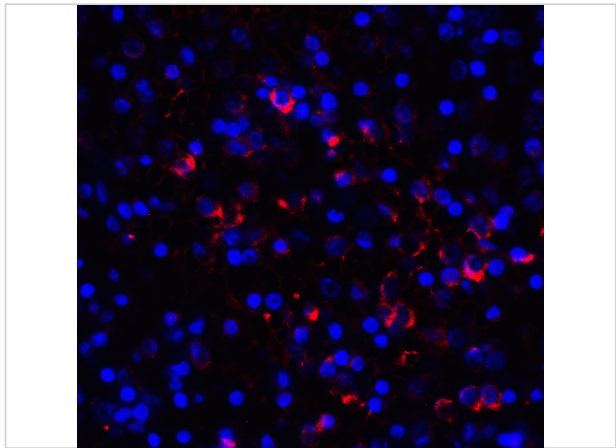
Immunocytochemistry of LAG-3 in over expressing HEK293 cells using LAG-3 antibody and control mouse IgG antibody (left corner box) at 1 µg/ml.



### LAG3 Antibody [9F9] 2

Immunofluorescence of LAG-3 in over expressing HEK293 cells using LAG-3 Antibody at 2 µg/ml.

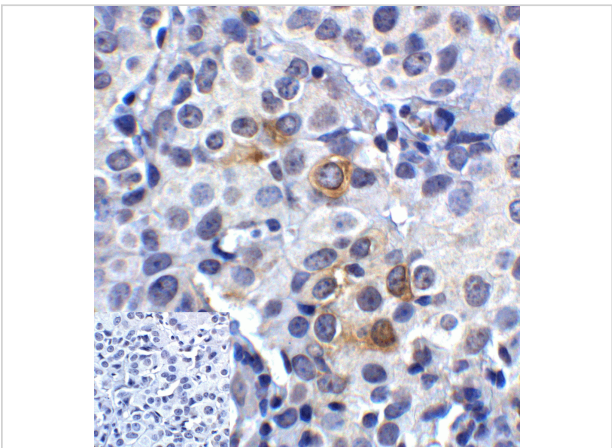
Green: LAG3 Antibody [9F9] (RF16084)  
Blue: DAPI staining



### LAG3 Antibody [9F9] 3

Immunofluorescence of LAG-3 in over human spleen tissue using LAG-3 Antibody at 10 µg/ml.

Red: LAG3 Antibody [9F9] (RF16084)  
Blue: DAPI staining



### LAG3 Antibody [9F9] 4

Immunohistochemistry of LAG-3 in human lymphoma tissue using LAG-3 Antibody and control mouse IgG (corner box) at 5 µg/ml.

## Disclaimer

Disclaimer	Optimal dilutions/concentrations should be determined by the end user. The information provided is a guideline for product use. This product is for research use only.
------------	--

For research use only. For additional information, visit ProSci's [Terms and Conditions Page](#).