



ProSci Incorporated
12170 Flint Place
Poway, CA 92064, USA
prosci-inc.com

P: +1 (888) 513-9525
Local: +1 (858) 513-2638
Fax: +1 (858) 513-2692

customercare@prosci-inc.com
techsupport@prosci-inc.com

VISTA Antibody [8E11]

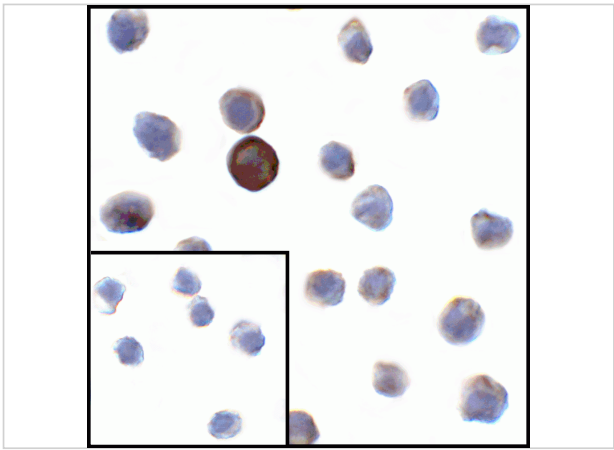
CATALOG NUMBER: RF16073

Specifications

Host Species	Mouse
Species Reactivity	Human
Immunogen	VISTA antibody was raised against the extracellular domain of human VISTA.
Conjugate	Unconjugated
Tested Applications	ELISA, Flow, ICC, IF, IHC-P
User Note	Optimal dilutions for each application to be determined by the researcher.
Predicted Molecular Weight	Predicted: 31 kDa Observed: 47 kDa

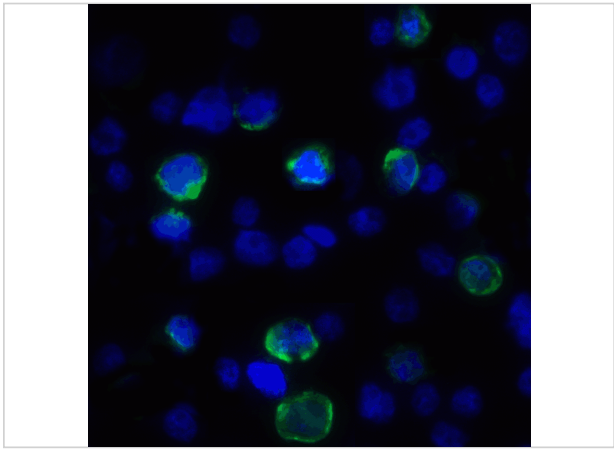
Properties

Purification	VISTA Antibody is supplied as protein A purified IgG1.
Clonality	Monoclonal
Isotype	IgG1
Physical State	Liquid
Buffer	VISTA Antibody is supplied in PBS containing 0.02% sodium azide and 50% glycerol.
Concentration	1 mg/mL
Storage Conditions	VISTA antibody can be stored at 4°C for three months and -20°C, stable for up to one year. As with all antibodies care should be taken to avoid repeated freeze thaw cycles. Antibodies should not be exposed to prolonged high temperatures.



VISTA Antibody [8E11] 1

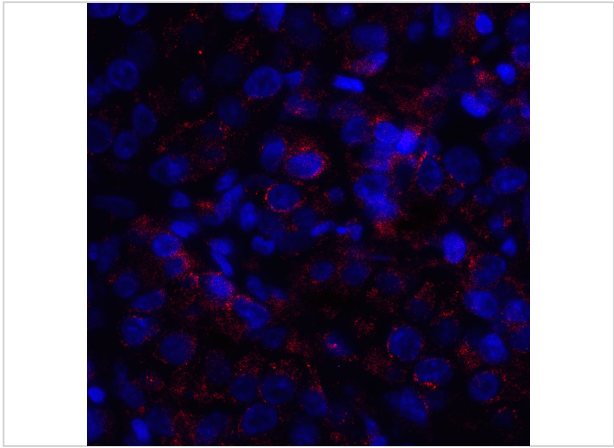
Immunocytochemistry of VISTA in transfected HEK293 cells with VISTA antibody at 1 µg/mL. Lower left: Immunocytochemistry in transfected HEK293 cells with control mouse IgG antibody at 1 µg/mL.



VISTA Antibody [8E11] 2

Immunofluorescence of VISTA in transfected HEK293 cells with VISTA antibody at 2 µg/mL.

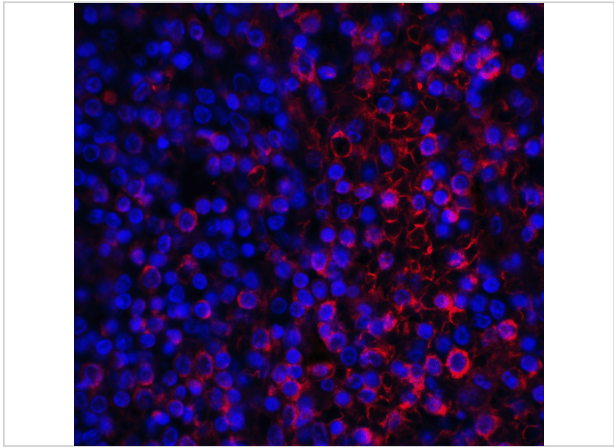
Green: VISTA Antibody [8E11] (RF16073)
Blue: DAPI staining



VISTA Antibody [8E11] 3

Immunofluorescence of VISTA in human lymphoma tissue with VISTA antibody at 10 µg/mL.

Red: VISTA Antibody [8E11] (RF16073)
Blue: DAPI staining



VISTA Antibody [8E11] 4

Immunofluorescence of VISTA in human spleen tissue with VISTA antibody at 10 µg/mL.

Red: VISTA Antibody [8E11] (RF16073)
Blue: DAPI staining

Disclaimer

Disclaimer	Optimal dilutions/concentrations should be determined by the end user. The information provided is a guideline for product use. This product is for research use only.
------------	--

For research use only. For additional information, visit ProSci's [Terms and Conditions Page](#).