

TSLP Receptor Antibody

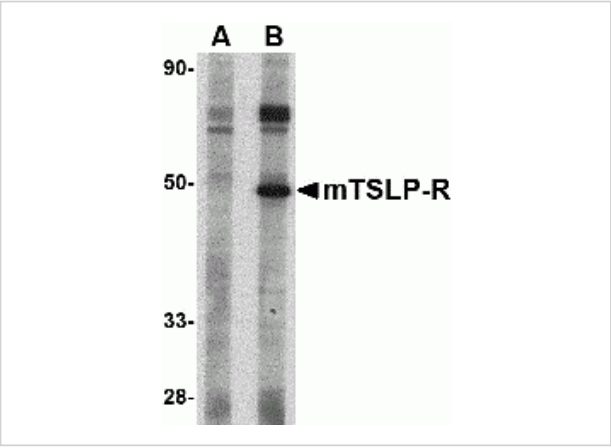
CATALOG NUMBER: 4209

Specifications

Host Species	Rabbit
Species Reactivity	Mouse
Immunogen	TSLP receptor antibody was raised against a 21 amino acid synthetic peptide from near the center of mouse TSLP receptor. The immunogen is located within amino acids 140 - 190 of TSLP Receptor.
Conjugate	Unconjugated
Tested Applications	ELISA, IF, WB
User Note	Optimal dilutions for each application to be determined by the researcher.

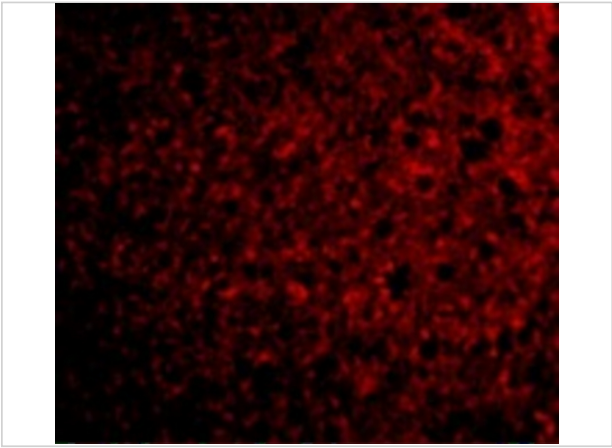
Properties

Purification	TSLP Receptor Antibody is affinity chromatography purified via peptide column.
Clonality	Polyclonal
Isotype	IgG
Physical State	Liquid
Buffer	TSLP Receptor Antibody is supplied in PBS containing 0.02% sodium azide.
Concentration	1 mg/mL
Storage Conditions	TSLP Receptor antibody can be stored at 4°C for three months and -20°C, stable for up to one year. As with all antibodies care should be taken to avoid repeated freeze thaw cycles. Antibodies should not be exposed to prolonged high temperatures.



TSLP Receptor Antibody 1

Western blot analysis of TSLP Receptor in mouse heart tissue lysate with TSLP Receptor antibody at 1 µg/mL in (A) the presence and (B) the absence of blocking peptide.



TSLP Receptor Antibody 2

Immunofluorescence of TSLP Receptor in Mouse Liver cells with TSLP Receptor antibody at 20 µg/mL.

Disclaimer

Disclaimer	Optimal dilutions/concentrations should be determined by the end user. The information provided is a guideline for product use. This product is for research use only.
------------	--

For research use only. For additional information, visit ProSci's [Terms and Conditions Page](#).