

LIGHT Antibody [7B9H9]

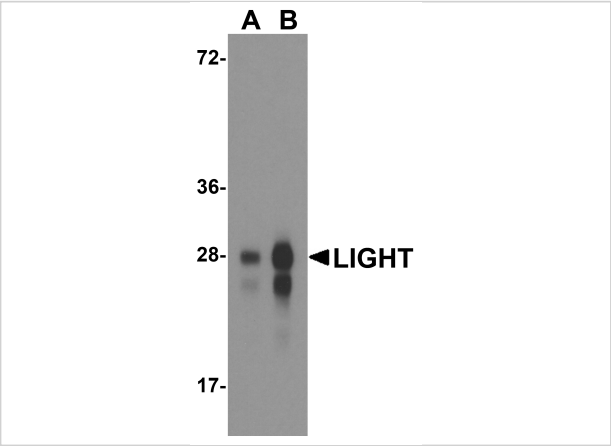
CATALOG NUMBER: RF16062

Specifications

| | |
|----------------------------|--|
| Host Species | Mouse |
| Species Reactivity | Human |
| Immunogen | LIGHT antibody was raised against the extracellular domain of human LIGHT. |
| Conjugate | Unconjugated |
| Tested Applications | ELISA, Flow, ICC, IF, IHC-P, WB |
| User Note | Optimal dilutions for each application to be determined by the researcher. |
| Predicted Molecular Weight | Predicted: 26 kDa |

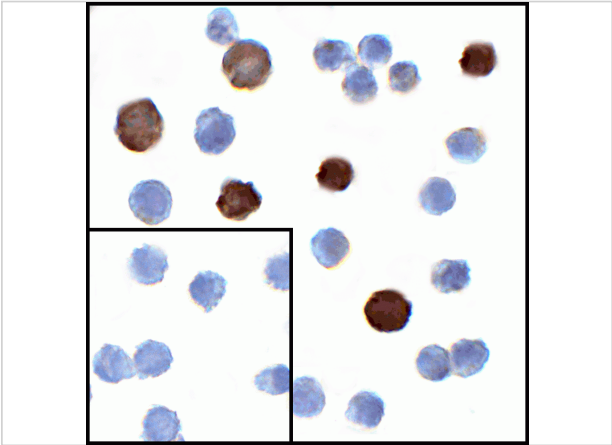
Properties

| | |
|--------------------|---|
| Purification | LIGHT Antibody is supplied as protein A purified IgG2b. |
| Clonality | Monoclonal |
| Isotype | IgG2b |
| Physical State | Liquid |
| Buffer | LIGHT Antibody is supplied in PBS containing 0.02% sodium azide and 50% glycerol. |
| Concentration | 1 mg/mL |
| Storage Conditions | LIGHT antibody can be stored at 4°C for three months and -20°C, stable for up to one year. As with all antibodies care should be taken to avoid repeated freeze thaw cycles. Antibodies should not be exposed to prolonged high temperatures. |



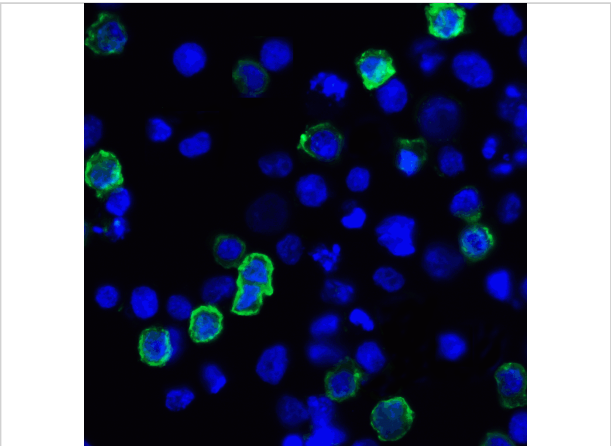
LIGHT Antibody [7B9H9] 1

Western blot analysis of LIGHT in overexpressing HEK293 cells with LIGHT antibody at 0.5 and 1 µg/ml



LIGHT Antibody [7B9H9] 2

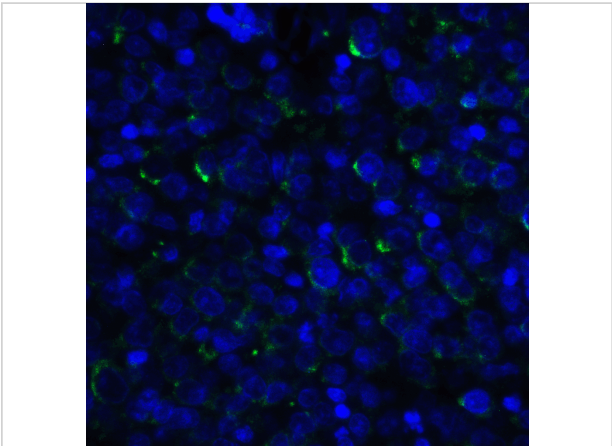
Immunocytochemistry of LIGHT in transfected HEK293 cells with LIGHT antibody at 1 µg/mL. Lower left: Immunocytochemistry in transfected HEK293 cells with control mouse IgG antibody at 1 µg/mL.



LIGHT Antibody [7B9H9] 3

Immunofluorescence of LIGHT in transfected HEK293 cells with LIGHT antibody at 2 µg/mL.

Green: LIGHT Antibody [7B9H9] (RF16062)
Blue: DAPI staining



LIGHT Antibody [7B9H9] 4

Immunofluorescence of LIGHT in human lymphoma tissue with LIGHT antibody at 20 µg/mL.

Green: LIGHT Antibody [7B9H9] (RF16062)
Blue: DAPI staining

Disclaimer

| | |
|-------------------|--|
| Disclaimer | Optimal dilutions/concentrations should be determined by the end user. The information provided is a guideline for product use. This product is for research use only. |
|-------------------|--|

For research use only. For additional information, visit ProSci's [Terms and Conditions Page](#).