

LIGHT Antibody [7B9F12]

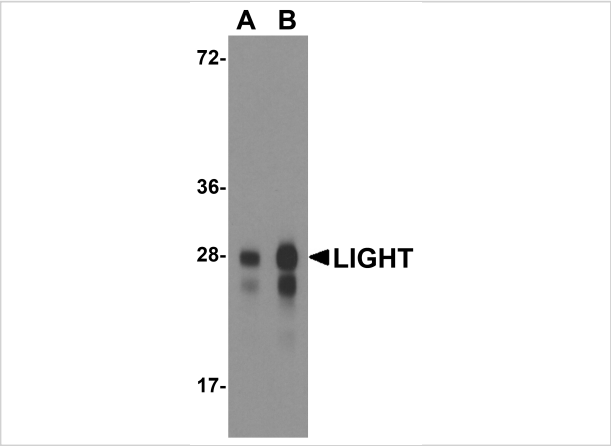
CATALOG NUMBER: RF16061

Specifications

Host Species	Mouse
Species Reactivity	Human
Immunogen	LIGHT antibody was raised against the extracellular domain of human LIGHT.
Conjugate	Unconjugated
Tested Applications	ELISA, Flow, ICC, IF, IHC-P, WB
User Note	Optimal dilutions for each application to be determined by the researcher.
Predicted Molecular Weight	Predicted: 26 kDa

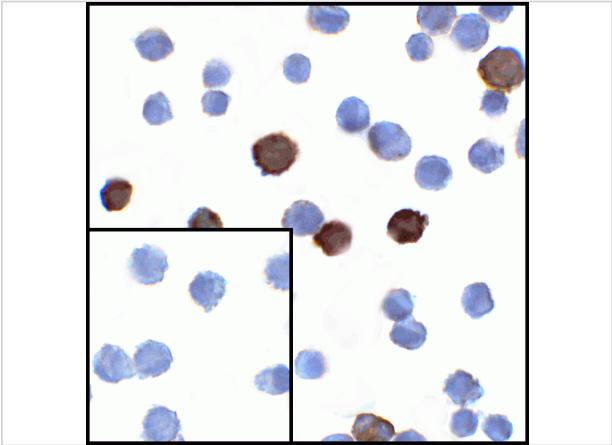
Properties

Purification	LIGHT Antibody is supplied as protein A purified IgG2b.
Clonality	Monoclonal
Isotype	IgG2b
Physical State	Liquid
Buffer	LIGHT Antibody is supplied in PBS containing 0.02% sodium azide and 50% glycerol.
Concentration	1 mg/mL
Storage Conditions	LIGHT antibody can be stored at 4°C for three months and -20°C, stable for up to one year. As with all antibodies care should be taken to avoid repeated freeze thaw cycles. Antibodies should not be exposed to prolonged high temperatures.



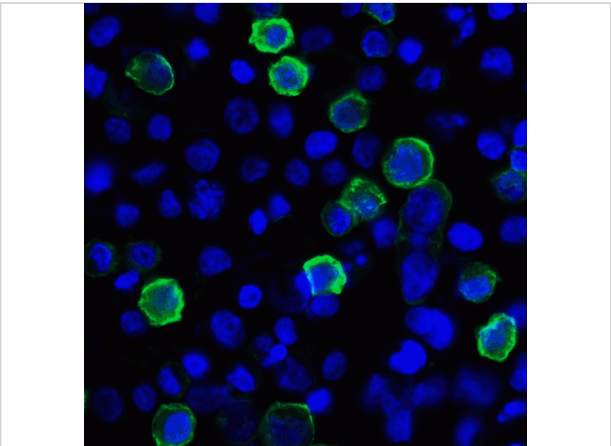
LIGHT Antibody [7B9F12] 1

Western blot analysis of LIGHT in overexpressing HEK293 cells with LIGHT antibody at 0.5 and 1 µg/ml



LIGHT Antibody [7B9F12] 2

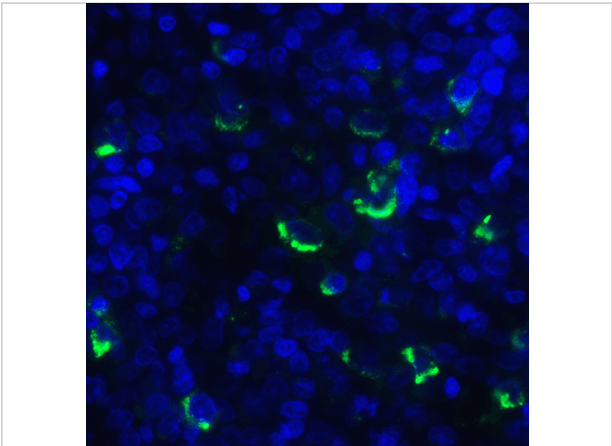
Immunocytochemistry of LIGHT in transfected HEK293 cells with LIGHT antibody at 1 µg/mL. Lower left: Immunocytochemistry in transfected HEK293 cells with control mouse IgG antibody at 1 µg/mL.



LIGHT Antibody [7B9F12] 3

Immunofluorescence of LIGHT in transfected HEK293 cells with LIGHT antibody at 2 µg/mL.

Green: LIGHT Antibody [7B9F12] (RF16061)
Blue: DAPI staining



LIGHT Antibody [7B9F12] 4

Immunofluorescence of LIGHT in human lymphoma tissue with LIGHT antibody at 20 µg/mL.

Green: LIGHT Antibody [7B9F12] (RF16061)
Blue: DAPI staining

Disclaimer

Disclaimer	Optimal dilutions/concentrations should be determined by the end user. The information provided is a guideline for product use. This product is for research use only.
-------------------	--

For research use only. For additional information, visit ProSci's [Terms and Conditions Page](#).