



ProSci Incorporated
12170 Flint Place
Poway, CA 92064, USA
prosci-inc.com

P: +1 (888) 513-9525
Local: +1 (858) 513-2638
Fax: +1 (858) 513-2692

customercare@prosci-inc.com
techsupport@prosci-inc.com

TIGIT Detection Set (Risk Free)

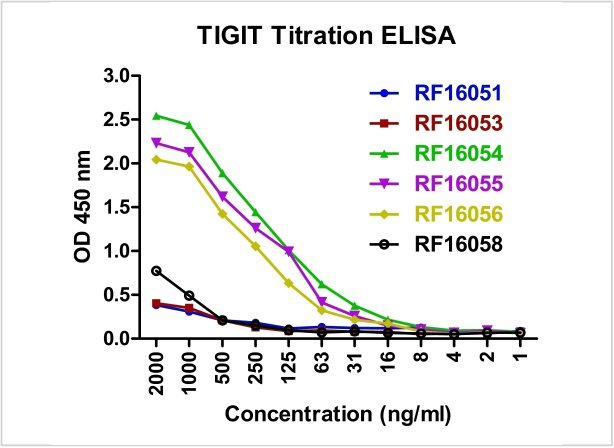
CATALOG NUMBER: RF16050

Specifications

| | |
|---------------------|---|
| Host Species | Mouse |
| Species Reactivity | Human |
| Immunogen | TIGIT antibodies were raised against the extracellular domain of human TIGIT. |
| Conjugate | Unconjugated |
| Tested Applications | ELISA, Flow, ICC, IF, IHC-P |
| User Note | Optimal dilutions for each application to be determined by the researcher. |

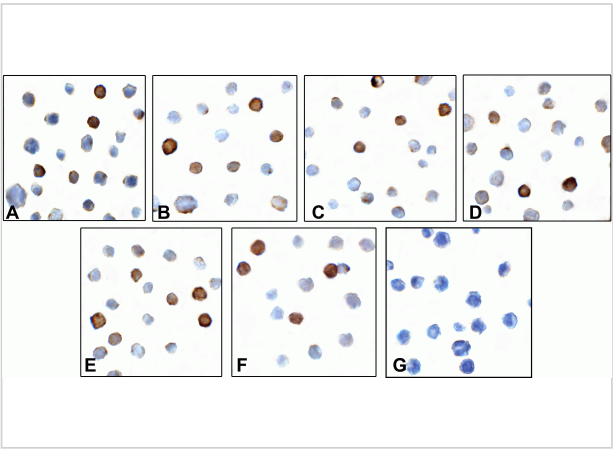
Properties

| | |
|--------------------|---|
| Purification | Antibodies are supplied as protein A purified IgG2b. |
| Clonality | Monoclonal |
| Isotype | IgG1, IgG2a, IgG2b |
| Physical State | Liquid |
| Buffer | PBS containing 0.02% sodium azide. |
| Concentration | Antibody 1 mg/mL |
| Storage Conditions | Antibodies can be stored at 4°C for three months and -20°C, stable for up to one year. As with all antibodies care should be taken to avoid repeated freeze thaw cycles. Antibodies should not be exposed to prolonged high temperatures. |



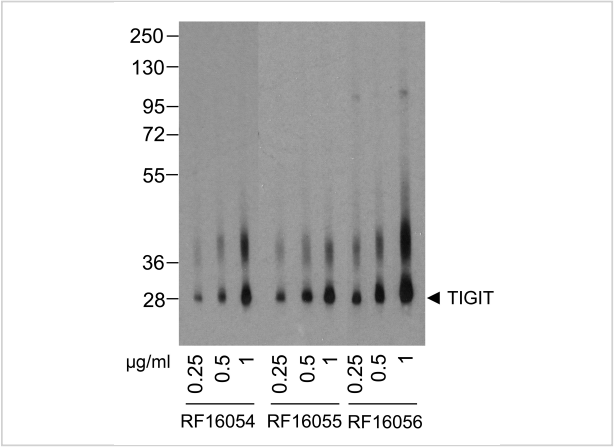
TIGIT Detection Set (Risk Free) 1

Titration curve analysis of TIGIT mAbs to detect recombinant TIGIT in ELISA with RF16051, RF16053, RF16054, RF16055, RF16056 and RF16058 antibodies at decreasing concentrations.



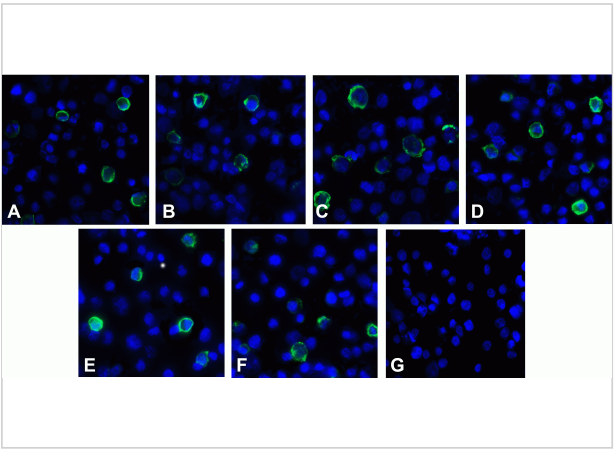
TIGIT Detection Set (Risk Free) 3

Immunocytochemistry of TIGIT in over expressing HEK293 cells using (A) RF16051, (B) RF16053, (C) RF16054, (D) RF16055, (E) RF16056, (F) RF16058, and (G) control mouse IgG antibody at 1 µg/ml.



TIGIT Detection Set (Risk Free) 2

Western blot analysis of TIGIT in over expressing HEK293 cells using RF16054, RF16055, and RF16056 antibodies at (A) 0.25 µg/ml, (B) 0.5 µg/ml, and (C) 1 µg/ml.



TIGIT Detection Set (Risk Free) 4

Immunofluorescence of TIGIT in over expressing HEK293 cells using (A) RF16051, (B) RF16053, (C) RF16054, (D) RF16055, (E) RF16056, (F) RF16058, and (G) control mouse IgG antibody at 1 µg/ml.

Disclaimer

| | |
|------------|--|
| Disclaimer | This product is for research use only. |
|------------|--|

For research use only. For additional information, visit ProSci's [Terms and Conditions Page](#).