



ProSci Incorporated  
12170 Flint Place  
Poway, CA 92064, USA  
prosci-inc.com

P: +1 (888) 513-9525  
Local: +1 (858) 513-2638  
Fax: +1 (858) 513-2692

customercare@prosci-inc.com  
techsupport@prosci-inc.com

## CD80 Antibody [7A2]

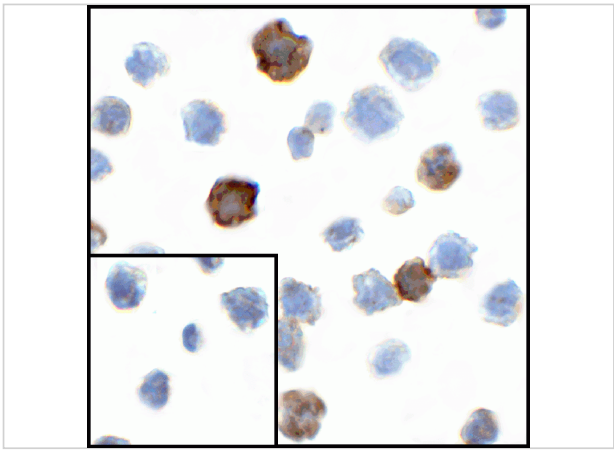
CATALOG NUMBER: RF16043

### Specifications

Host Species	Mouse
Species Reactivity	Human
Immunogen	CD80 antibody was raised against the extracellular domain of human CD80.
Conjugate	Unconjugated
Tested Applications	ELISA, Flow, ICC, IF, IHC-P
User Note	Optimal dilutions for each application to be determined by the researcher.
Predicted Molecular Weight	Predicted: 32 kDa Observed: 50 kDa

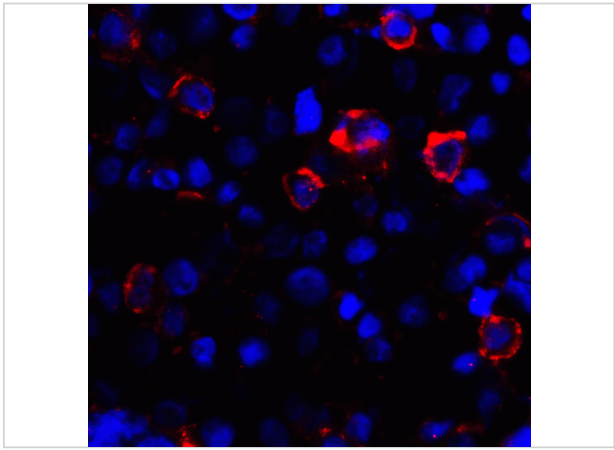
### Properties

Purification	CD80 Antibody is supplied as protein A purified IgG1.
Clonality	Monoclonal
Isotype	IgG1
Physical State	Liquid
Buffer	CD80 Antibody is supplied in PBS containing 0.02% sodium azide and 50% glycerol.
Concentration	1 mg/mL
Storage Conditions	CD80 antibody can be stored at 4°C for three months and -20°C, stable for up to one year. As with all antibodies care should be taken to avoid repeated freeze thaw cycles. Antibodies should not be exposed to prolonged high temperatures.



### CD80 Antibody [7A2] 1

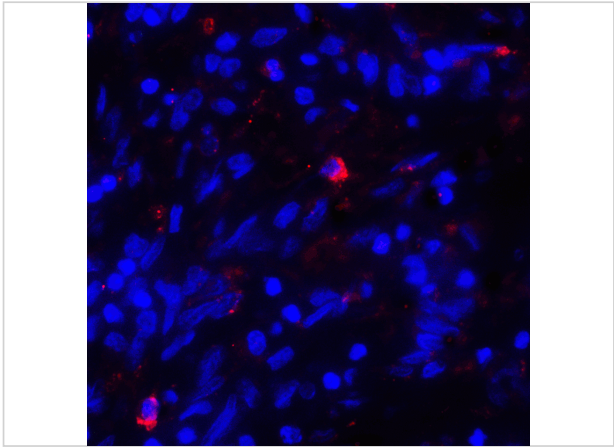
Immunocytochemistry of CD80 in transfected HEK293 cells with CD80 antibody at 1 µg/mL. Lower left: Immunocytochemistry in transfected HEK293 cells with control mouse IgG antibody at 1 µg/mL.



### CD80 Antibody [7A2] 2

Immunofluorescence of CD80 in transfected HEK293 cells with CD80 antibody at 2 µg/mL.

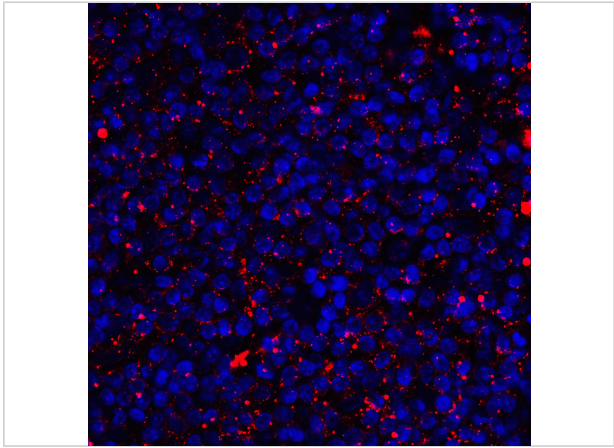
Red: CD80 Antibody [7A2] (RF16043)  
Blue: DAPI staining



### CD80 Antibody [7A2] 3

Immunofluorescence of CD80 in human stomach carcinoma tissue with CD80 antibody at 20 µg/mL.

Red: CD80 Antibody [7A2] (RF16043)  
Blue: DAPI staining



### CD80 Antibody [7A2] 4

Immunofluorescence of CD80 in human tonsil tissue with CD80 antibody at 2 µg/mL.

Red: CD80 Antibody [7A2] (RF16043)  
Blue: DAPI staining

## Disclaimer

Disclaimer	Optimal dilutions/concentrations should be determined by the end user. The information provided is a guideline for product use. This product is for research use only.
------------	------------------------------------------------------------------------------------------------------------------------------------------------------------------------

For research use only. For additional information, visit ProSci's [Terms and Conditions Page](#).