



ProSci Incorporated
12170 Flint Place
Poway, CA 92064, USA
prosci-inc.com

P: +1 (888) 513-9525
Local: +1 (858) 513-2638
Fax: +1 (858) 513-2692

customercare@prosci-inc.com
techsupport@prosci-inc.com

CD80 Antibody [10A1]

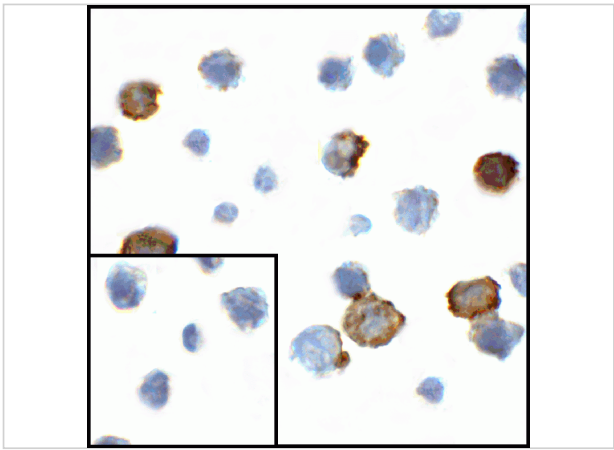
CATALOG NUMBER: RF16042

Specifications

Host Species	Mouse
Species Reactivity	Human
Immunogen	CD80 antibody was raised against the extracellular domain of human CD80.
Conjugate	Unconjugated
Tested Applications	ELISA, Flow, ICC, IF, IHC-P
User Note	Optimal dilutions for each application to be determined by the researcher.
Predicted Molecular Weight	Predicted: 32 kDa Observed: 50 kDa

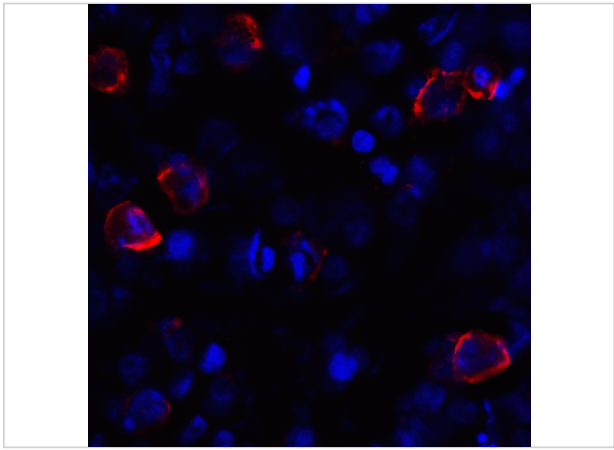
Properties

Purification	CD80 Antibody is supplied as protein A purified IgG2b.
Clonality	Monoclonal
Isotype	IgG2b
Physical State	Liquid
Buffer	CD80 Antibody is supplied in PBS containing 0.02% sodium azide and 50% glycerol.
Concentration	1 mg/mL
Storage Conditions	CD80 antibody can be stored at 4°C for three months and -20°C, stable for up to one year. As with all antibodies care should be taken to avoid repeated freeze thaw cycles. Antibodies should not be exposed to prolonged high temperatures.



CD80 Antibody [10A1] 1

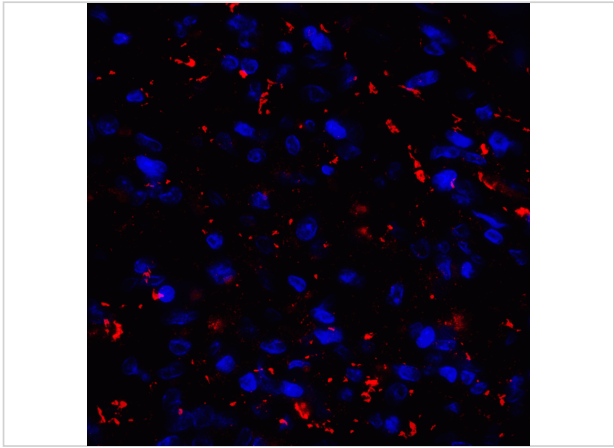
Immunocytochemistry of CD80 in transfected HEK293 cells with CD80 antibody at 1 µg/mL. Lower left: Immunocytochemistry in transfected HEK293 cells with control mouse IgG antibody at 1 µg/mL.



CD80 Antibody [10A1] 2

Immunofluorescence of CD80 in transfected HEK293 cells with CD80 antibody at 2 µg/mL.

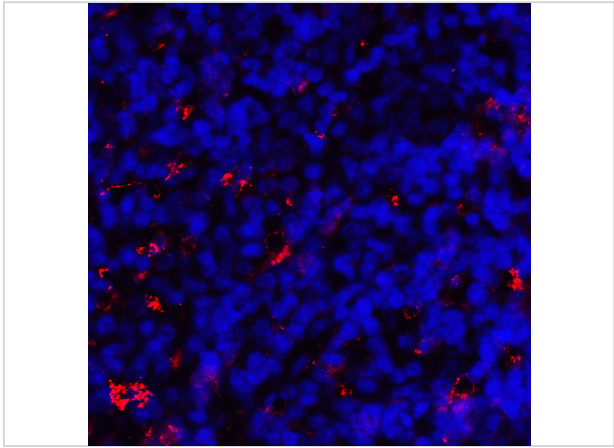
Red: CD80 Antibody [10A1] (RF16042)
Blue: DAPI staining



CD80 Antibody [10A1] 3

Immunofluorescence of CD80 in human stomach carcinoma tissue with CD80 antibody at 20 µg/mL.

Red: CD80 Antibody [10A1] (RF16042)
Blue: DAPI staining



CD80 Antibody [10A1] 4

Immunofluorescence of CD80 in human tonsil tissue with CD80 antibody at 2 µg/mL.

Red: CD80 Antibody [10A1] (RF16042)
Blue: DAPI staining

Disclaimer

Disclaimer	Optimal dilutions/concentrations should be determined by the end user. The information provided is a guideline for product use. This product is for research use only.
------------	--

For research use only. For additional information, visit ProSci's [Terms and Conditions Page](#).