



ProSci Incorporated
12170 Flint Place
Poway, CA 92064, USA
prosci-inc.com

P: +1 (888) 513-9525
Local: +1 (858) 513-2638
Fax: +1 (858) 513-2692

customercare@prosci-inc.com
techsupport@prosci-inc.com

PDL1 Antibody [8E12] (biotin)

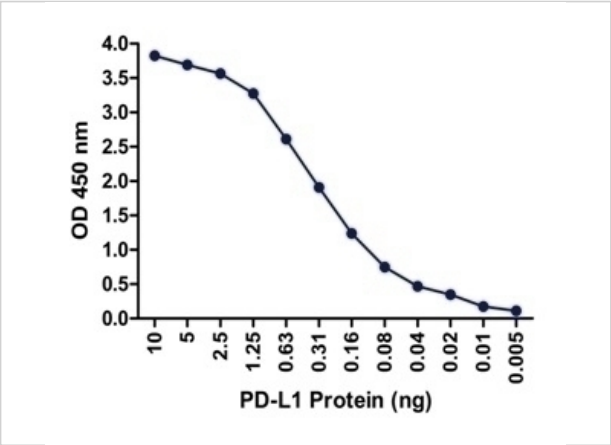
CATALOG NUMBER: RF16032-biotin

Specifications

| | |
|---------------------|--|
| Host Species | Mouse |
| Species Reactivity | Human |
| Immunogen | PD-L1 antibody was raised against the extracellular domain of human PD-L1. |
| Conjugate | Biotin |
| Tested Applications | ELISA |
| User Note | Optimal dilutions for each application to be determined by the researcher. |

Properties

| | |
|--------------------|---|
| Purification | PD-L1 Antibody is supplied as protein A purified IgG1. |
| Clonality | Monoclonal |
| Isotype | IgG1 |
| Physical State | Liquid |
| Buffer | PD-L1 Antibody is supplied in PBS containing 1% BSA and 0.02% sodium azide. |
| Concentration | 1 mg/mL |
| Storage Conditions | PD-L1 antibody can be stored at 4°C for three months and -20°C, stable for up to one year. As with all antibodies care should be taken to avoid repeated freeze thaw cycles. Antibodies should not be exposed to prolonged high temperatures. |



PDL1 Antibody [8E12] (biotin) 1

A sandwich ELISA was performed using the anti-PD-L1 mAb RF16038 (5 µg/ml) as the capture antibody. Biotin-labeled anti-PD-L1 mAb RF16032-biotin (1 µg/ml) and streptavidin-HRP (0.1 µg/ml) were used ...

Disclaimer

| | |
|------------|--|
| Disclaimer | Optimal dilutions/concentrations should be determined by the end user. The information provided is a guideline for product use. This product is for research use only. |
|------------|--|

For research use only. For additional information, visit ProSci's [Terms and Conditions Page](#).