



ProSci Incorporated
12170 Flint Place
Poway, CA 92064, USA
prosci-inc.com

P: +1 (888) 513-9525
Local: +1 (858) 513-2638
Fax: +1 (858) 513-2692

customercare@prosci-inc.com
techsupport@prosci-inc.com

STIM2 Antibody

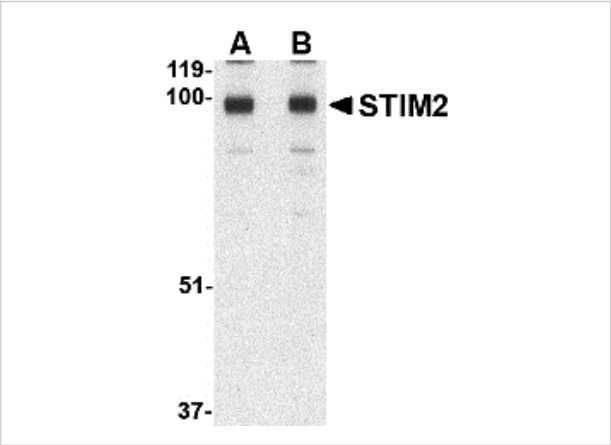
CATALOG NUMBER: 4123

Specifications

Host Species	Rabbit
Species Reactivity	Human, Mouse, Rat
Immunogen	STIM2 antibody was raised against a 18 amino acid synthetic peptide from near the carboxy terminus of human STIM2. The immunogen is located within the last 50 amino acids of STIM2.
Conjugate	Unconjugated
Tested Applications	ELISA, IF, IHC-P, WB
User Note	Optimal dilutions for each application to be determined by the researcher.

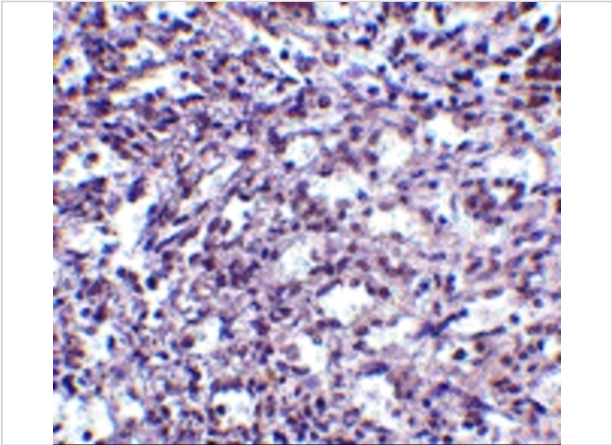
Properties

Purification	STIM2 Antibody is affinity chromatography purified via peptide column.
Clonality	Polyclonal
Isotype	IgG
Physical State	Liquid
Buffer	STIM2 Antibody is supplied in PBS containing 0.02% sodium azide.
Concentration	1 mg/mL
Storage Conditions	STIM2 antibody can be stored at 4°C up to one year. Antibodies should not be exposed to prolonged high temperatures.



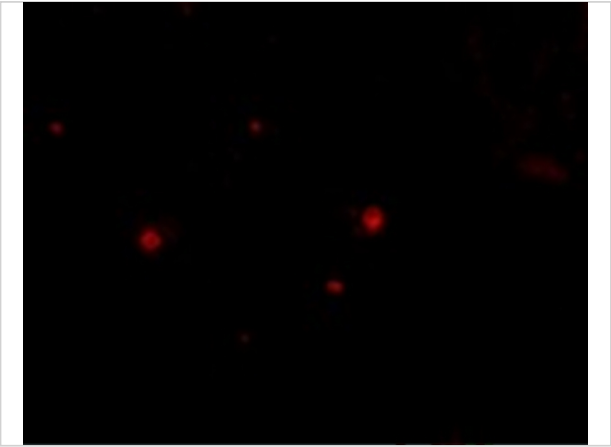
STIM2 Antibody 1

Western blot analysis of STIM2 in A-20 cell lysate with STIM2 antibody at (A) 0.5 and (B) 1 µg/mL.



STIM2 Antibody 2

Immunohistochemistry of STIM2 in human spleen tissue with STIM2 antibody at 2.5 µg/mL.



STIM2 Antibody 3

Immunofluorescence of STIM2 in Human Spleen cells with STIM2 antibody at 20 µg/mL.

Disclaimer

Disclaimer	Optimal dilutions/concentrations should be determined by the end user. The information provided is a guideline for product use. This product is for research use only.
------------	--

For research use only. For additional information, visit ProSci's [Terms and Conditions Page](#).