



ProSci Incorporated
12170 Flint Place
Poway, CA 92064, USA
prosci-inc.com

P: +1 (888) 513-9525
Local: +1 (858) 513-2638
Fax: +1 (858) 513-2692

customercare@prosci-inc.com
techsupport@prosci-inc.com

PDL2 Detection Set (Risk Free)

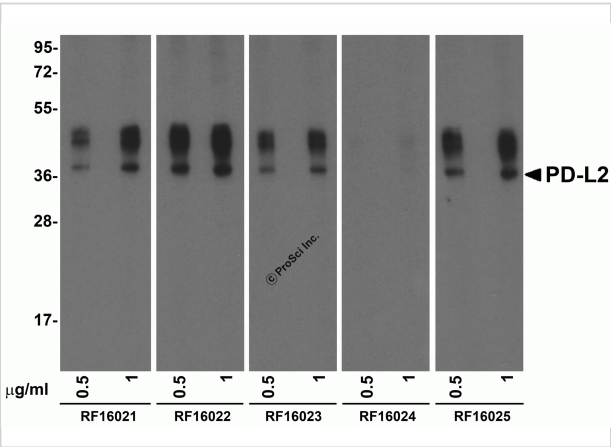
CATALOG NUMBER: RF16020

Specifications

Host Species	Mouse
Species Reactivity	Human
Immunogen	Mouse monoclonal PD-L2 antibodies were raised against the extracellular domain of human PD-L2.
Conjugate	Unconjugated
Tested Applications	ELISA, Flow, ICC, IF, IHC-P, WB
User Note	Optimal dilutions for each application to be determined by the researcher.

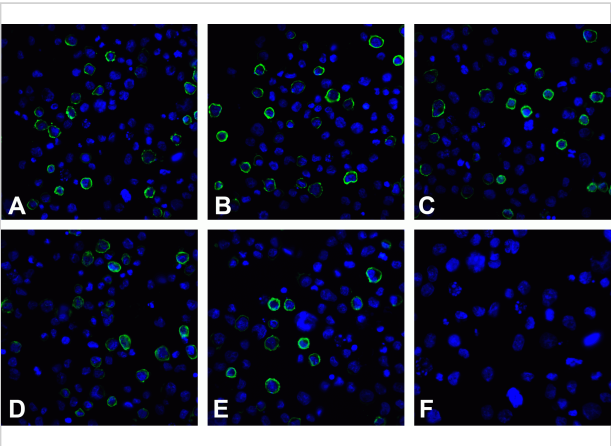
Properties

Purification	Antibodies are supplied as protein A purified IgG1.
Clonality	Monoclonal
Isotype	IgG1
Physical State	Liquid
Buffer	PBS containing 0.02% sodium azide.
Concentration	Antibody 1 mg/mL
Storage Conditions	Antibodies can be stored at 4°C for three months and -20°C, stable for up to one year. As with all antibodies care should be taken to avoid repeated freeze thaw cycles. Antibodies should not be exposed to prolonged high temperatures.



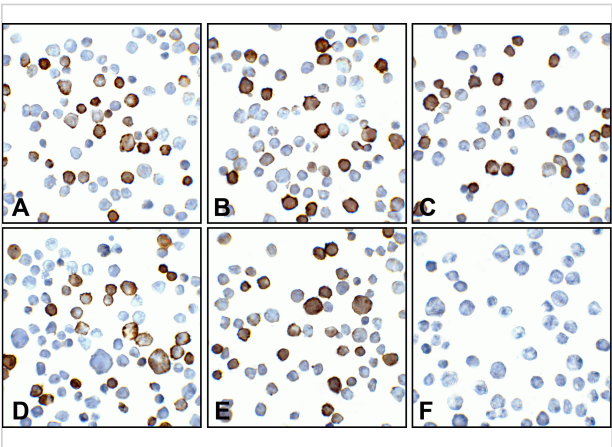
PDL2 Detection Set (Risk Free) 1

Western blot analysis of PD-L2 in overexpressing 293 cells using RF16021, RF16022, RF16023, RF16024, and RF16025 antibody at 0.5 and 1 µg/ml, respectively. Larger molecular weight bands represent ...



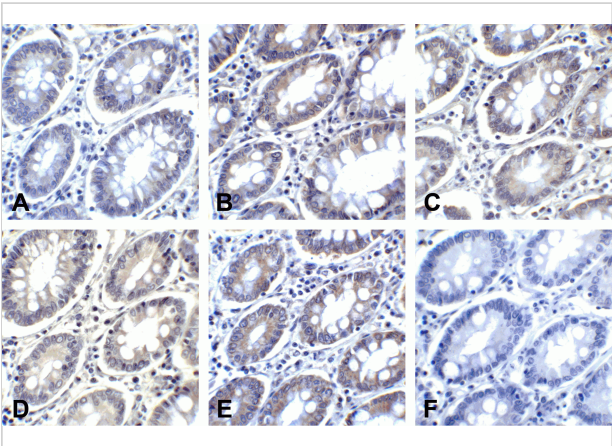
PDL2 Detection Set (Risk Free) 3

Immunofluorescence of PD-L2 in overexpressing 293 cells using (A) RF16021, (B) RF16022, (C) RF16023, (D) RF16024, (E) RF16025, and (F) control mouse IgG antibody at 20 µg/ml.



PDL2 Detection Set (Risk Free) 2

Immunocytochemistry of PD-L2 in overexpressing 293 cells using (A) RF16021, (B) RF16022, (C) RF16023, (D) RF16024, (E) RF16025, and (F) control mouse IgG antibody at 5 µg/ml.



PDL2 Detection Set (Risk Free) 4

Immunohistochemistry of PD-L2 in human colon carcinoma tissue using (A) RF16021, (B) RF16022, (C) RF16023, (D) RF16024, (E) RF16025, and (F) control mouse IgG antibody at 2 µg/ml.

Disclaimer

Disclaimer	This product is for research use only.
------------	--

For research use only. For additional information, visit ProSci's [Terms and Conditions Page](#).