

STIM1 Antibody

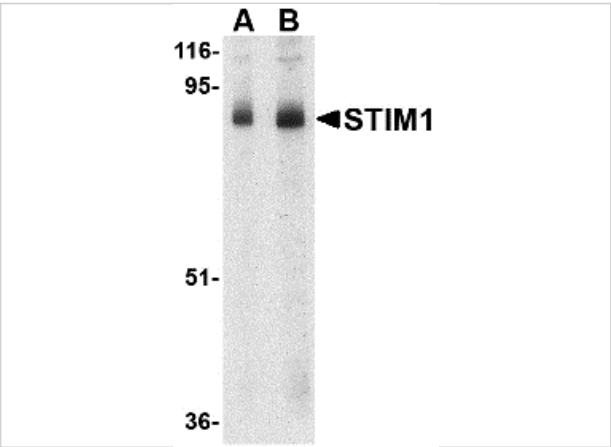
CATALOG NUMBER: 4119

Specifications

Host Species	Rabbit
Species Reactivity	Human, Mouse, Rat
Homology	Predicted species reactivity based on immunogen sequence: Bovine: (100%)
Immunogen	STIM1 antibody was raised against a 24 amino acid synthetic peptide from near the carboxy terminus of human STIM1. The immunogen is located within the last 50 amino acids of STIM1.
Conjugate	Unconjugated
Tested Applications	ELISA, IF, IHC-P, WB
User Note	Optimal dilutions for each application to be determined by the researcher.
Specificity	At least two isoforms of STIM1 are known to exist; this antibody will detect only the larger form. This STIM1 antibody is predicted to have no cross-reactivity to STIM2.
Predicted Molecular Weight	Predicted: 59, 75, 87 kDa Observed: 88 kDa

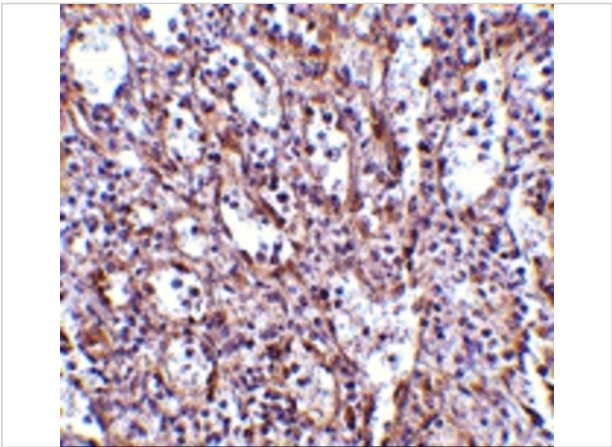
Properties

Purification	STIM1 Antibody is affinity chromatography purified via peptide column.
Clonality	Polyclonal
Isotype	IgG
Physical State	Liquid
Buffer	STIM1 Antibody is supplied in PBS containing 0.02% sodium azide.
Concentration	1 mg/mL
Storage Conditions	STIM1 antibody can be stored at 4°C for three months and -20°C, stable for up to one year. As with all antibodies care should be taken to avoid repeated freeze thaw cycles. Antibodies should not be exposed to prolonged high temperatures.



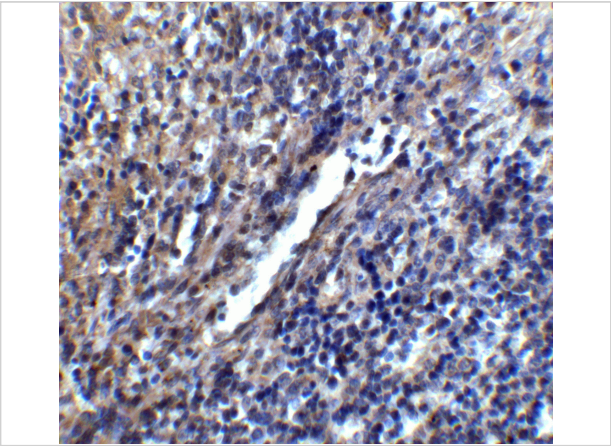
STIM1 Antibody 1

Western blot analysis of STIM1 in mouse thymus tissue lysate with STIM1 antibody at (A) 1 and (B) 2 µg/mL.



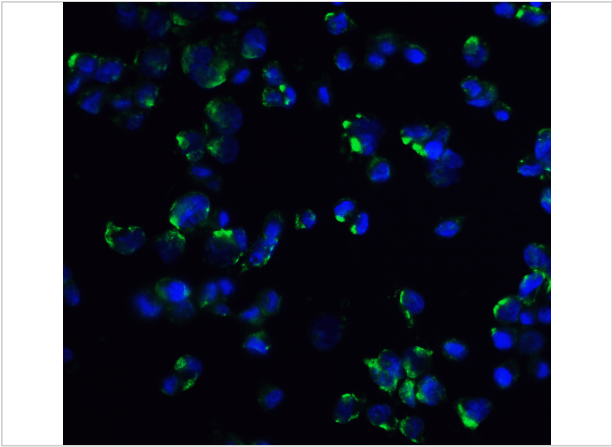
STIM1 Antibody 2

Immunohistochemistry of STIM1 in human spleen tissue with STIM1 antibody at 2.5 µg/mL.



STIM1 Antibody 3

Immunohistochemistry of STIM1 in mouse spleen tissue with STIM1 antibody at 5 µg/mL.



STIM1 Antibody 4

Immunofluorescence of STIM1 in mouse spleen tissue with STIM1 antibody at 20 µg/mL.

Green: STIM1 Antibody (4119)
Blue: DAPI staining

Disclaimer

Disclaimer	Optimal dilutions/concentrations should be determined by the end user. The information provided is a guideline for product use. This product is for research use only.
------------	--

For research use only. For additional information, visit ProSci's [Terms and Conditions Page](#).