

CTLA4 Antibody [1E6]

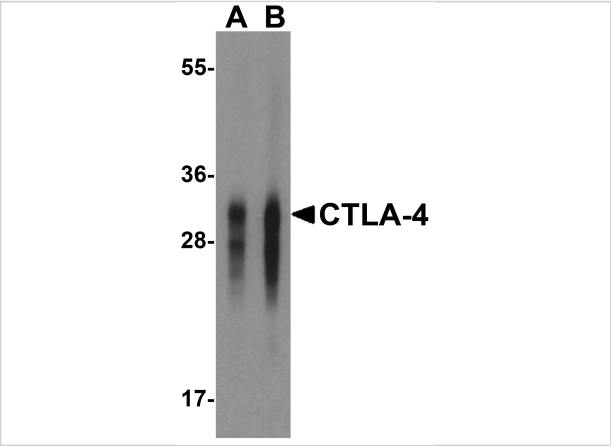
CATALOG NUMBER: RF16011

Specifications

Host Species	Mouse
Species Reactivity	Human
Immunogen	CTLA-4 antibody was raised against the extracellular domain of human CTLA-4.
Conjugate	Unconjugated
Tested Applications	ELISA, ICC, IF, IHC-P, WB
User Note	Optimal dilutions for each application to be determined by the researcher.
Predicted Molecular Weight	Predicted: 25 kDa Observed: 32 kDa

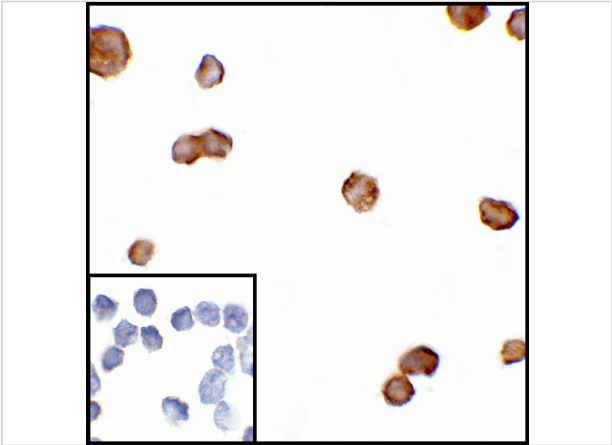
Properties

Purification	CTLA-4 Antibody is supplied as protein A purified IgG1.
Clonality	Monoclonal
Isotype	IgG1
Physical State	Liquid
Buffer	CTLA-4 Antibody is supplied in PBS containing 0.02% sodium azide and 50% glycerol.
Concentration	1 mg/mL
Storage Conditions	CTLA-4 antibody can be stored at 4°C for three months and -20°C, stable for up to one year. As with all antibodies care should be taken to avoid repeated freeze thaw cycles. Antibodies should not be exposed to prolonged high temperatures.



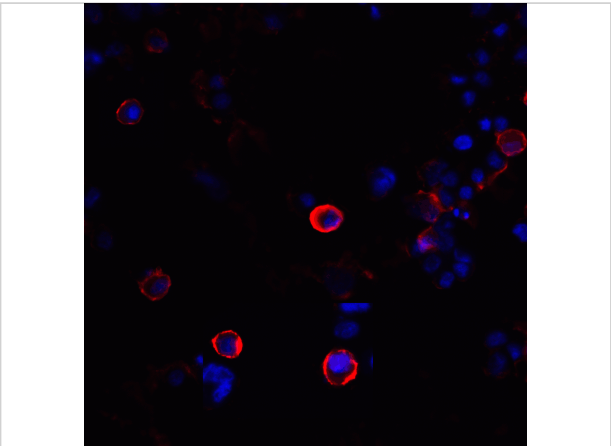
CTLA4 Antibody [1E6] 1

Western blot analysis of CTLA-4 in overexpressing HEK293 cells CTLA-4 antibody at 0.125 and 0.25 $\mu\text{g/mL}$.



CTLA4 Antibody [1E6] 2

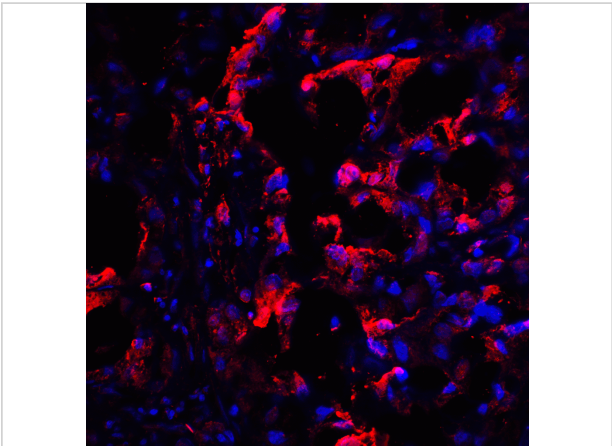
Immunocytochemistry of CTLA-4 in transfected HEK293 cells with CTLA-4 antibody at 5 $\mu\text{g/mL}$. Lower left: Immunocytochemistry in transfected HEK293 cells with control mouse IgG antibody at 5 $\mu\text{g/mL}$.



CTLA4 Antibody [1E6] 3

Immunofluorescence of CTLA-4 in transfected HEK293 cells with CTLA-4 antibody at 20 $\mu\text{g/mL}$.

Red: CTLA4 Antibody [1E6] (RF16011)
Blue: DAPI staining



CTLA4 Antibody [1E6] 4

Immunofluorescence of CTLA-4 in human lymph node tissue with CTLA-4 antibody at 20 $\mu\text{g/mL}$.

Red: CTLA4 Antibody [1E6] (RF16011)
Blue: DAPI staining

Disclaimer

Disclaimer	Optimal dilutions/concentrations should be determined by the end user. The information provided is a guideline for product use. This product is for research use only.
------------	--

For research use only. For additional information, visit ProSci's [Terms and Conditions Page](#).