

## PD1 Antibody [5D3]

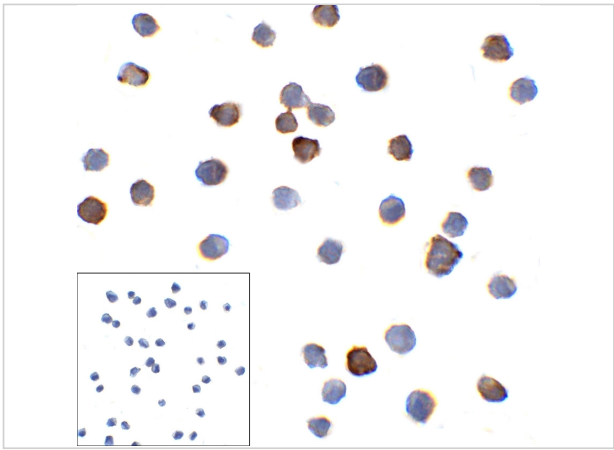
CATALOG NUMBER: RF16006

### Specifications

Host Species	Mouse
Species Reactivity	Human
Immunogen	PD-1 antibody was raised against the extracellular domain of human PD-1.
Conjugate	Unconjugated
Tested Applications	ELISA, Flow, ICC, IF, IHC-P
User Note	Optimal dilutions for each application to be determined by the researcher.

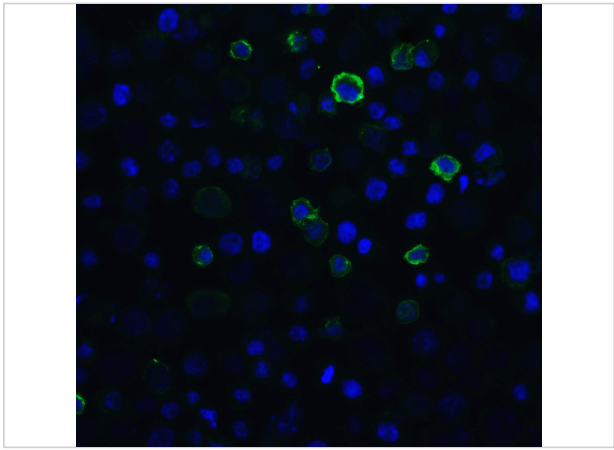
### Properties

Purification	PD-1 Antibody is supplied as protein A purified IgG1.
Clonality	Monoclonal
Isotype	IgG1
Physical State	Liquid
Buffer	PD-1 Antibody is supplied in PBS containing 0.02% sodium azide and 50% glycerol.
Concentration	1 mg/mL
Storage Conditions	PD-1 antibody can be stored at 4°C for three months and -20°C, stable for up to one year. As with all antibodies care should be taken to avoid repeated freeze thaw cycles. Antibodies should not be exposed to prolonged high temperatures.



### PD1 Antibody [5D3] 1

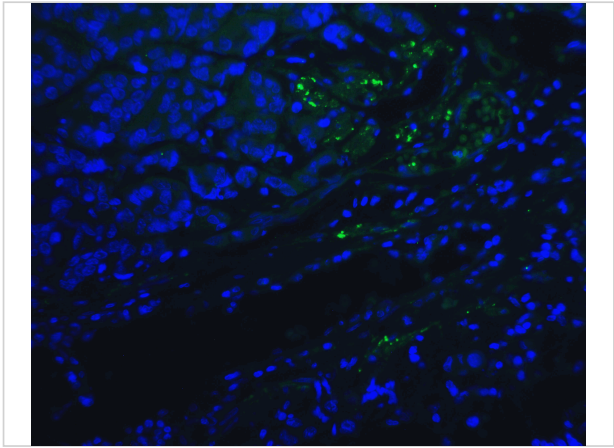
Immunocytochemistry of PD-1 in overexpressing HEK293 cells with PD-1 antibody at 10 µg/mL. Corner Box: Immunocytochemistry in transfected 293 cells with control mouse IgG antibody at 10 µg/mL.



### PD1 Antibody [5D3] 2

Immunofluorescence of PD-1 in overexpressing HEK293 cells with PD-1 antibody at 20 µg/mL.

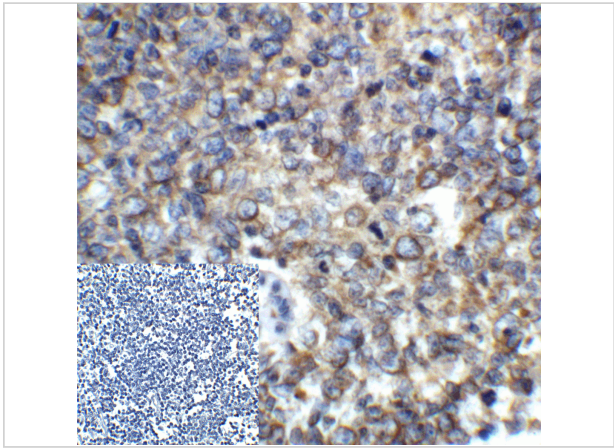
Green: PD1 Antibody [5D3] (RF16006)  
Blue: DAPI staining



### PD1 Antibody [5D3] 3

Immunofluorescence of PD-1 in human lymph node tissue with PD-1 antibody at 20 µg/mL.

Green: PD1 Antibody [10B3] (RF16005)  
Blue: DAPI staining



### PD1 Antibody [5D3] 4

Immunohistochemistry of PD-1 in human lymph node tissue with PD-1 antibody at 5 µg/mL. Corner Box: Immunocytochemistry in transfected 293 cells with control mouse IgG antibody at 10 µg/mL.

## Disclaimer

Disclaimer	Optimal dilutions/concentrations should be determined by the end user. The information provided is a guideline for product use. This product is for research use only.
------------	--

For research use only. For additional information, visit ProSci's [Terms and Conditions Page](#).