



ProSci Incorporated
12170 Flint Place
Poway, CA 92064, USA
prosci-inc.com

P: +1 (888) 513-9525
Local: +1 (858) 513-2638
Fax: +1 (858) 513-2692

customercare@prosci-inc.com
techsupport@prosci-inc.com

PD1 Antibody [8A4]

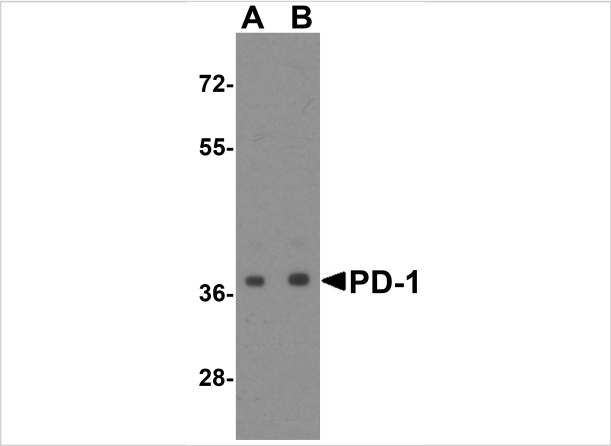
CATALOG NUMBER: RF16002

Specifications

Host Species	Mouse
Species Reactivity	Human
Immunogen	PD-1 antibody was raised against the extracellular domain of human PD-1.
Conjugate	Unconjugated
Tested Applications	ELISA, ICC, IF, IHC-P, WB
User Note	Optimal dilutions for each application to be determined by the researcher.
Predicted Molecular Weight	Predicted: 32 kDa Observed: 38 kDa

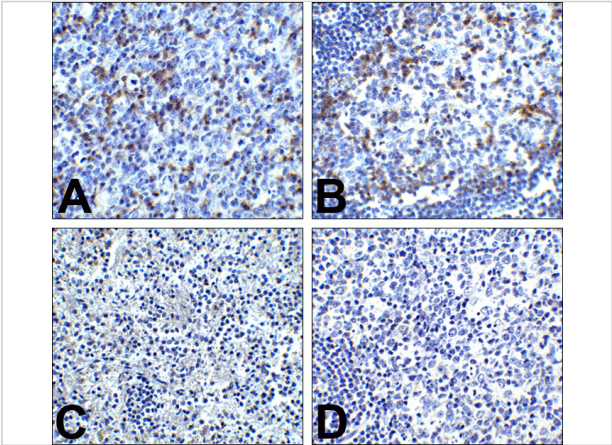
Properties

Purification	PD-1 Antibody is supplied as protein A purified IgG1.
Clonality	Monoclonal
Isotype	IgG1
Physical State	Liquid
Buffer	PD-1 Antibody is supplied in PBS containing 0.02% sodium azide and 50% glycerol.
Concentration	1 mg/mL
Storage Conditions	PD-1 antibody can be stored at 4°C for three months and -20°C, stable for up to one year. As with all antibodies care should be taken to avoid repeated freeze thaw cycles. Antibodies should not be exposed to prolonged high temperatures.



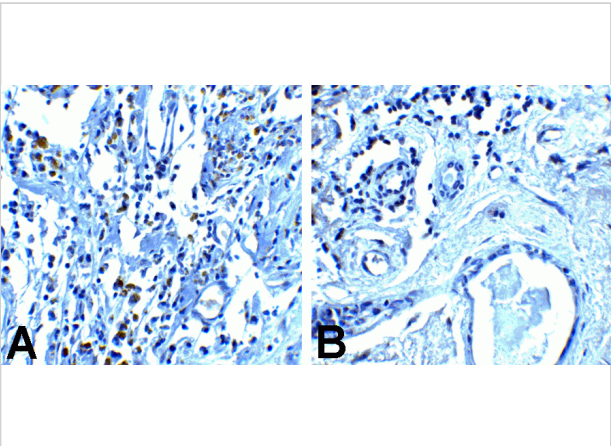
PD1 Antibody [8A4] 1

Western blot analysis of PD-1 in transfected 293 cell lysate with PD-1 antibody at (A) 0.5 and (B) 1 µg/mL.



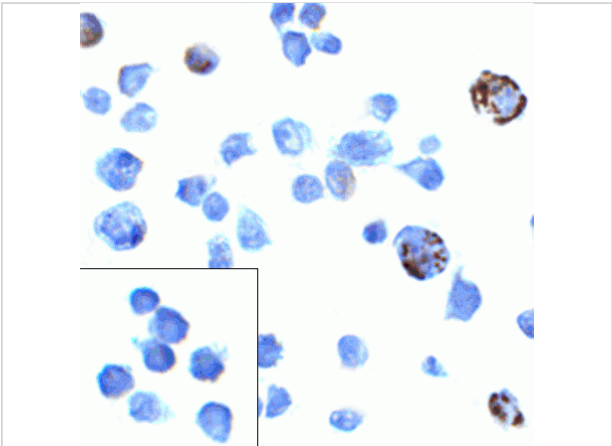
PD1 Antibody [8A4] 2

Immunohistochemistry of PD-1 in (A) human tonsil tissue, (B) human lymph node tissue, and (C) human spleen tissue with PD-1 antibody at 5 µg/mL. (D) Immunohistochemistry in human tonsil tissue with...



PD1 Antibody [8A4] 3

Immunohistochemistry of PD-1 in (A) human breast cancer tissue and (B) human normal breast tissue with PD-1 antibody at 5 µg/mL.



PD1 Antibody [8A4] 4

Immunocytochemistry of PD-1 in transfected 293 cells with PD-1 antibody at 5 µg/mL. Lower left: Immunocytochemistry in transfected 293 cells with control mouse IgG antibody at 5 µg/mL.

Disclaimer

Disclaimer	Optimal dilutions/concentrations should be determined by the end user. The information provided is a guideline for product use. This product is for research use only.
------------	--

For research use only. For additional information, visit ProSci's [Terms and Conditions Page](#).