

ORAI2 Antibody

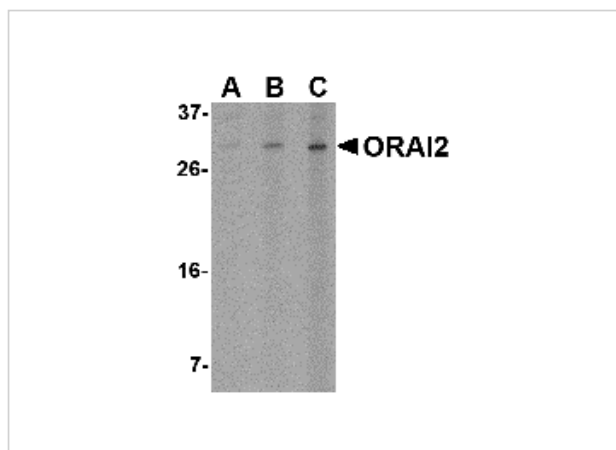
CATALOG NUMBER: 4111

Specifications

Host Species	Rabbit
Species Reactivity	Human, Mouse
Homology	Predicted species reactivity based on immunogen sequence: Chicken: (100%)
Immunogen	ORAI2 antibody was raised against a 15 amino acid synthetic peptide from near the carboxy terminus of human ORAI2. The immunogen is located within the last 50 amino acids of ORAI2.
Conjugate	Unconjugated
Tested Applications	ELISA, ICC, IF, WB
User Note	Optimal dilutions for each application to be determined by the researcher.
Specificity	At least two isoforms of ORAI2 are known to exist; this antibody will detect both isoforms. ORAI antibody is predicted not to cross-react with ORAI1 or ORAI3.
Predicted Molecular Weight	Predicted: 19, 28 kDa Observed: 29 kDa

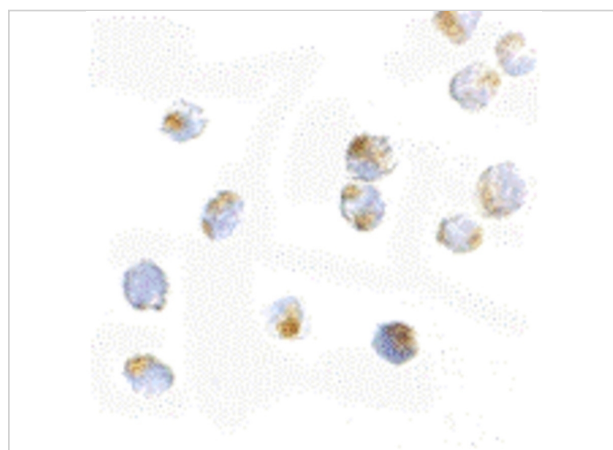
Properties

Purification	ORAI2 Antibody is affinity chromatography purified via peptide column.
Clonality	Polyclonal
Isotype	IgG
Physical State	Liquid
Buffer	ORAI2 Antibody is supplied in PBS containing 0.02% sodium azide.
Concentration	1 mg/mL
Storage Conditions	ORAI2 antibody can be stored at 4°C for three months and -20°C, stable for up to one year. As with all antibodies care should be taken to avoid repeated freeze thaw cycles. Antibodies should not be exposed to prolonged high temperatures.



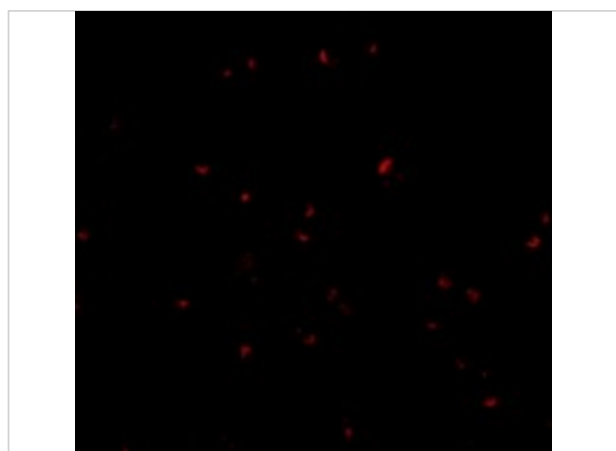
ORAI2 Antibody 1

Western blot analysis of ORAI2 in Jurkat cell lysate with ORAI2 antibody at (A) 1, (B) 2 and (C) 4 $\mu\text{g/mL}$.



ORAI2 Antibody 2

Immunocytochemistry of ORAI2 in Jurkat cells with ORAI2 antibody at 5 $\mu\text{g/mL}$.



ORAI2 Antibody 3

Immunofluorescence of ORAI2 in Jurkat cells with ORAI2 antibody at 20 $\mu\text{g/mL}$.

Disclaimer

Disclaimer

Optimal dilutions/concentrations should be determined by the end user. The information provided is a guideline for product use. This product is for research use only.

For research use only. For additional information, visit ProSci's [Terms and Conditions Page](#).