



ProSci Incorporated
12170 Flint Place
Poway, CA 92064, USA
prosci-inc.com

P: +1 (888) 513-9525
Local: +1 (858) 513-2638
Fax: +1 (858) 513-2692

customercare@prosci-inc.com
techsupport@prosci-inc.com

cMyc-tag Antibody [5G5H7]

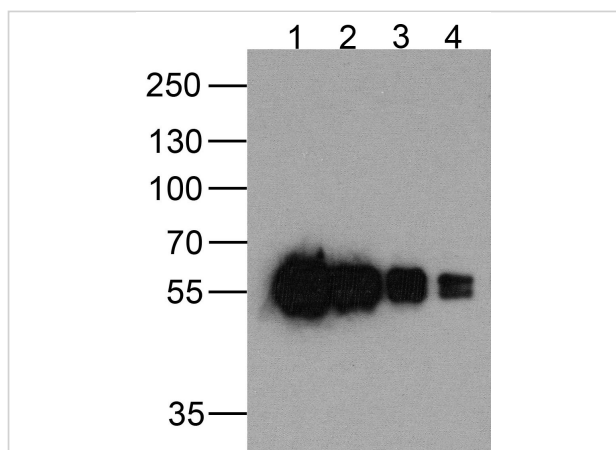
CATALOG NUMBER: PM-7669

Specifications

Host Species	Mouse
Species Reactivity	Tag
Immunogen	cMyc-tag antibody was raised against a synthetic peptide containing EQKLISEEDL.
Conjugate	Unconjugated
Tested Applications	ELISA, IP, WB
User Note	Optimal dilutions for each application to be determined by the researcher.
Specificity	cMyc-tag antibody will detect amino- or carboxy-terminal Myc-tagged recombinant proteins.
Predicted Molecular Weight	N/A

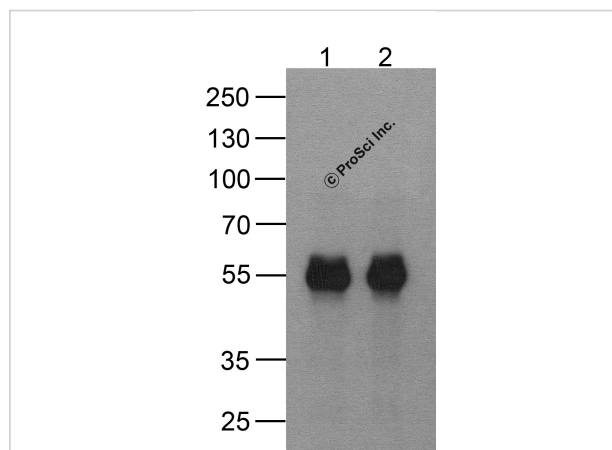
Properties

Purification	cMyc-tag antibody is Protein A chromatography purified.
Clonality	Monoclonal
Isotype	IgG1
Physical State	Liquid
Buffer	cMyc-tag antibody is supplied in PBS containing 0.02% sodium azide.
Concentration	1 mg/mL
Storage Conditions	cMyc-tag antibody can be stored at 4°C for three months and -20°C, stable for up to one year.



cMyc-tag Antibody [5G5H7] 1

Western blot analysis of (1) 200ng, (2) 100 ng, (3) 50 ng, and (4) 25 ng of a cMyc-tag-containing recombinant GGP1 protein with cMyc-tag antibody at 0.5 µg/ml.



cMyc-tag Antibody [5G5H7] 2

Western blot analysis of (1) 20 ng of cMyc-tagged recombinant GGP1 protein and (2) 20 ng of cMyc-tagged recombinant GGP1 protein using 1 µg of cMyc-tag antibody to immunoprecipitate and 1 µg/ml ant...

Disclaimer

Disclaimer

Optimal dilutions/concentrations should be determined by the end user. The information provided is a guideline for product use. This product is for research use only.

For research use only. For additional information, visit ProSci's [Terms and Conditions Page](#).