



ProSci Incorporated
12170 Flint Place
Poway, CA 92064, USA
prosci-inc.com

P: +1 (888) 513-9525
Local: +1 (858) 513-2638
Fax: +1 (858) 513-2692

customercare@prosci-inc.com
techsupport@prosci-inc.com

HAT-tag Antibody [4A6F3]

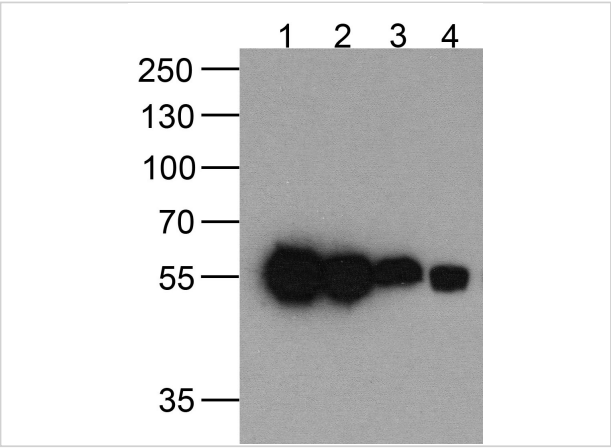
CATALOG NUMBER: PM-7661

Specifications

Host Species	Mouse
Species Reactivity	Tag
Immunogen	HAT-tag antibody was raised against a synthetic peptide containing KDHLIHNVHKEFHAAHNK.
Conjugate	Unconjugated
Tested Applications	ELISA, IP, WB
User Note	Optimal dilutions for each application to be determined by the researcher.
Specificity	HAT-tag antibody will detect amino- or carboxy-terminal HAT-tagged recombinant proteins.
Predicted Molecular Weight	N/A

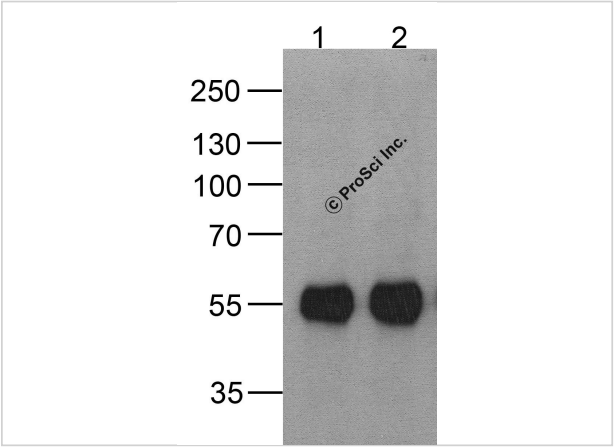
Properties

Purification	HAT-tag antibody is Protein A chromatography purified.
Clonality	Monoclonal
Isotype	IgG
Physical State	Liquid
Buffer	HAT-tag antibody is supplied in PBS containing 0.02% sodium azide.
Concentration	1 mg/mL
Storage Conditions	HAT-tag antibody can be stored at 4°C for three months and -20°C, stable for up to one year.



HAT-tag Antibody [4A6F3] 1

Western blot analysis of (1) 200ng, (2) 100 ng, (3) 50 ng, and (4) 25 ng of a HAT-tag-containing recombinant GGP1 protein with HAT-tag antibody at 0.5 µg/ml.



HAT-tag Antibody [4A6F3] 2

Western blot analysis of (1) 20 ng of HAT-tagged recombinant GGP1 protein and (2) 20 ng of HAT-tagged recombinant GGP1 protein using 1 µg of HAT-tag antibody to immunoprecipitate and 1 µg/ml anti-G...

Disclaimer

Disclaimer	Optimal dilutions/concentrations should be determined by the end user. The information provided is a guideline for product use. This product is for research use only.
-------------------	--

For research use only. For additional information, visit ProSci's [Terms and Conditions Page](#).