

## GAPDH Antibody [12D3H9]

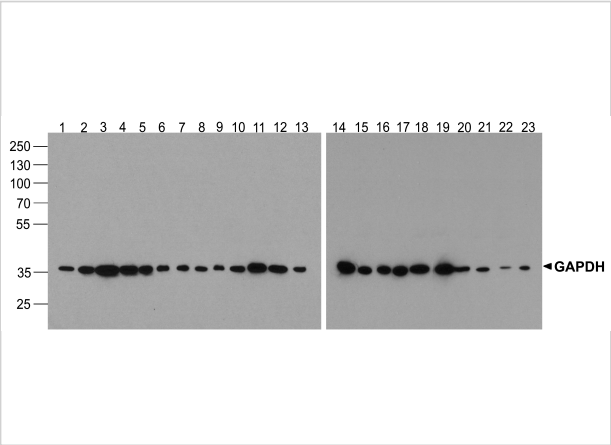
CATALOG NUMBER: PM-7571

### Specifications

<b>Host Species</b>	Mouse
<b>Species Reactivity</b>	Human, Mouse, Rat
<b>Homology</b>	Predicted species reactivity based on immunogen sequence: Pig: (100%), Guinea pig: (100%), Sheep: (93%), Bovine: (93%), Chicken: (93%), Rabbit: (93%)
<b>Immunogen</b>	GAPDH antibody was raised against a 16 amino acid peptide near the carboxy terminus of human GAPDH. The immunogen is located within amino acids 230 - 280 of GAPDH.
<b>Conjugate</b>	Unconjugated
<b>Tested Applications</b>	ELISA, WB
<b>User Note</b>	Optimal dilutions for each application to be determined by the researcher.
<b>Specificity</b>	GAPDH antibody is human, mouse, and rat reactive.
<b>Predicted Molecular Weight</b>	Predicted: 37 kDa Observed: 36 kDa

### Properties

<b>Purification</b>	GAPDH antibody is Protein A purified.
<b>Clonality</b>	Monoclonal
<b>Isotype</b>	IgG
<b>Physical State</b>	Liquid
<b>Buffer</b>	GAPDH antibody is supplied in PBS containing 0.02% sodium azide.
<b>Concentration</b>	1 mg/mL
<b>Storage Conditions</b>	GAPDH antibody can be stored at 4°C for three months and -20°C, stable for up to one year.



GAPDH Antibody [12D3H9] 1

Western blot analysis of GAPDH in multiple cell and tissue lysates with GAPDH antibody at 1 µg/ml. Lanes 1-23, 293, A431, A549, Daudi, HeLa, HepG2, Jurkat, K562, MOLT, 3T3, Raji, Ramos, U937, human...

Disclaimer

Disclaimer	Optimal dilutions/concentrations should be determined by the end user. The information provided is a guideline for product use. This product is for research use only.
------------	--

For research use only. For additional information, visit ProSci's [Terms and Conditions Page](#).