

KAI1 Antibody

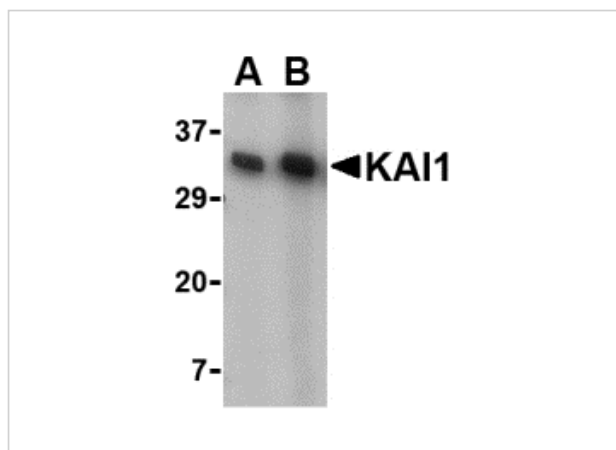
CATALOG NUMBER: 4073

Specifications

Host Species	Rabbit
Species Reactivity	Human, Mouse, Rat
Immunogen	KAI1 antibody was raised against a 15 amino acid synthetic peptide from near the carboxy terminus of human KAI1. The immunogen is located within the last 50 amino acids of KAI1.
Conjugate	Unconjugated
Tested Applications	ELISA, IF, IHC-P, WB
User Note	Optimal dilutions for each application to be determined by the researcher.

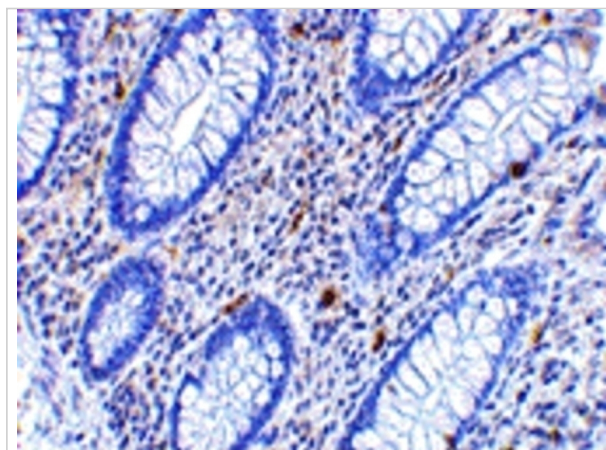
Properties

Purification	KAI1 Antibody is affinity chromatography purified via peptide column.
Clonality	Polyclonal
Isotype	IgG
Physical State	Liquid
Buffer	KAI1 Antibody is supplied in PBS containing 0.02% sodium azide.
Concentration	1 mg/mL
Storage Conditions	KAI1 antibody can be stored at 4°C for three months and -20°C, stable for up to one year. As with all antibodies care should be taken to avoid repeated freeze thaw cycles. Antibodies should not be exposed to prolonged high temperatures.



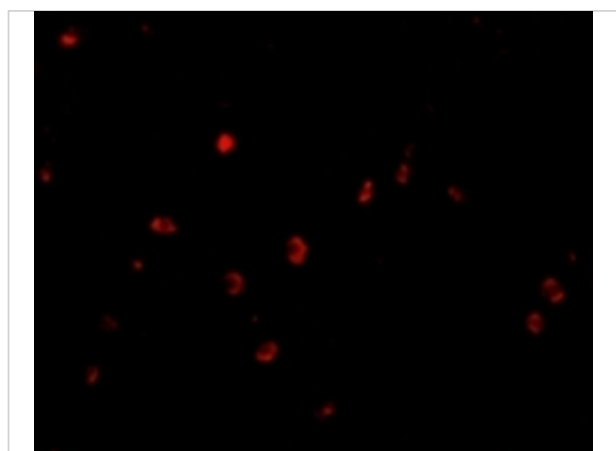
KAI1 Antibody 1

Western blot analysis of KAI1 in A549 cell lysate with KAI1 antibody at (A) 0.5 and (B) 1 $\mu\text{g/mL}$.



KAI1 Antibody 2

Immunohistochemistry of KAI1 in human colon tissue with KAI1 antibody at 2.5 $\mu\text{g/mL}$.



KAI1 Antibody 3

Immunofluorescence of KAI1 in Human Colon cells with KAI1 antibody at 20 $\mu\text{g/mL}$.

Disclaimer

Disclaimer

Optimal dilutions/concentrations should be determined by the end user. The information provided is a guideline for product use. This product is for research use only.

For research use only. For additional information, visit ProSci's [Terms and Conditions Page](#).