

DARC Antibody

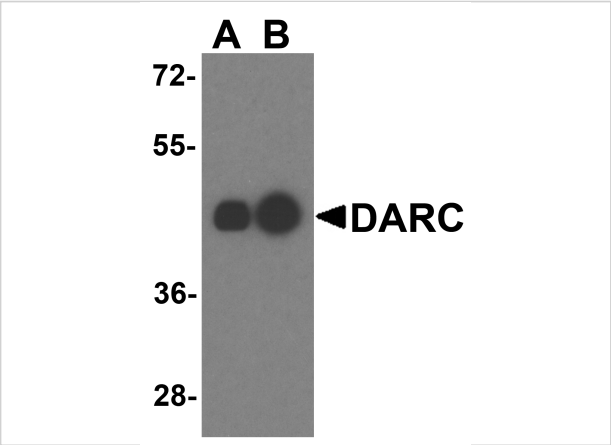
CATALOG NUMBER: 4071

Specifications

Host Species	Rabbit
Species Reactivity	Human
Immunogen	DARC antibody was raised against a 18 amino acid synthetic peptide from near the amino terminus of human DARC. The immunogen is located within the first 50 amino acids of DARC.
Conjugate	Unconjugated
Tested Applications	ELISA, IF, IHC-P, WB
User Note	Optimal dilutions for each application to be determined by the researcher.

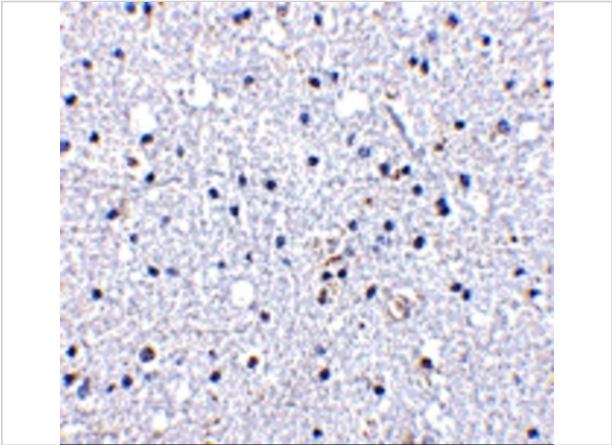
Properties

Purification	DARC Antibody is affinity chromatography purified via peptide column.
Clonality	Polyclonal
Isotype	IgG
Physical State	Liquid
Buffer	DARC Antibody is supplied in PBS containing 0.02% sodium azide.
Concentration	1 mg/mL
Storage Conditions	DARC antibody can be stored at 4°C for three months and -20°C, stable for up to one year. As with all antibodies care should be taken to avoid repeated freeze thaw cycles. Antibodies should not be exposed to prolonged high temperatures.



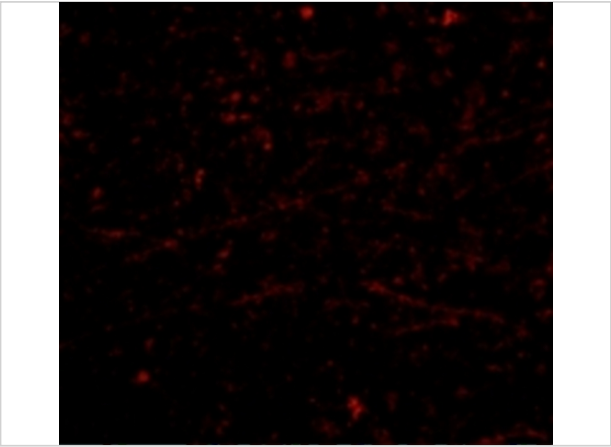
DARC Antibody 1

Western blot analysis of DARC in human liver tissue lysate with DARC antibody at (A) 0.25 and (B) 0.5 $\mu\text{g/mL}$.



DARC Antibody 2

Immunohistochemistry of DARC in human brain tissue with DARC antibody at 5 $\mu\text{g/mL}$.



DARC Antibody 3

Immunofluorescence of DARC in Human Brain cells with DARC antibody at 20 $\mu\text{g/mL}$.

Disclaimer

Disclaimer	Optimal dilutions/concentrations should be determined by the end user. The information provided is a guideline for product use. This product is for research use only.
------------	--

For research use only. For additional information, visit ProSci's [Terms and Conditions Page](#).