

Lin28 Antibody [1G9H9]

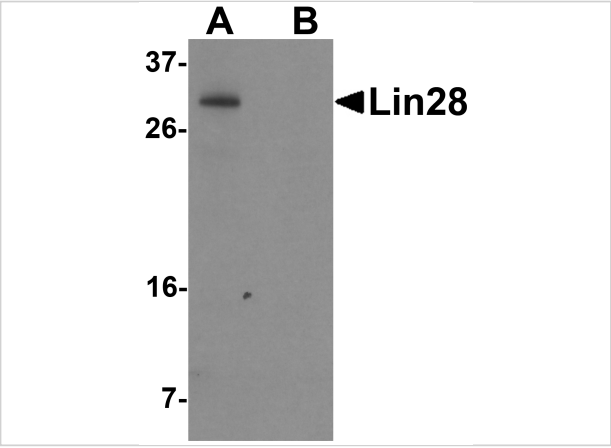
CATALOG NUMBER: PM-6143

Specifications

Host Species	Mouse
Species Reactivity	Human
Homology	Predicted species reactivity based on immunogen sequence: Mouse: (87%), Chicken: (79%)
Immunogen	Mouse monoclonal Lin28 antibody was raised against a 15 amino acid peptide near the carboxy terminus of human Lin28. The immunogen is located within the last 50 amino acids of Lin28.
Conjugate	Unconjugated
Tested Applications	ELISA, WB
User Note	Optimal dilutions for each application to be determined by the researcher.
Specificity	At least two isoforms of Lin28 are known to exist; this antibody will detect both. Lin28 antibody will not cross-react with Lin28 Homolog B.
Predicted Molecular Weight	Predicted: 23 kDa

Properties

Purification	Lin28 Monoclonal Antibody is affinity chromatography purified via peptide column.
Clonality	Monoclonal
Isotype	IgG2b
Physical State	Liquid
Buffer	Lin28 Monoclonal Antibody is supplied in PBS containing 0.02% sodium azide.
Concentration	1 mg/mL
Storage Conditions	Lin28 Monoclonal antibody can be stored at 4°C for three months and -20°C, stable for up to one year.



Lin28 Antibody [1G9H9] 1

Western blot analysis of Lin28 in Raji cell lysate with Lin28 antibody at 0.5 µg/mL in (A) the absence and (B) the presence of blocking peptide.

Disclaimer

Disclaimer	Optimal dilutions/concentrations should be determined by the end user. The information provided is a guideline for product use. This product is for research use only.
------------	--

For research use only. For additional information, visit ProSci's [Terms and Conditions Page](#).