

KLF4 Antibody [4E5C3]

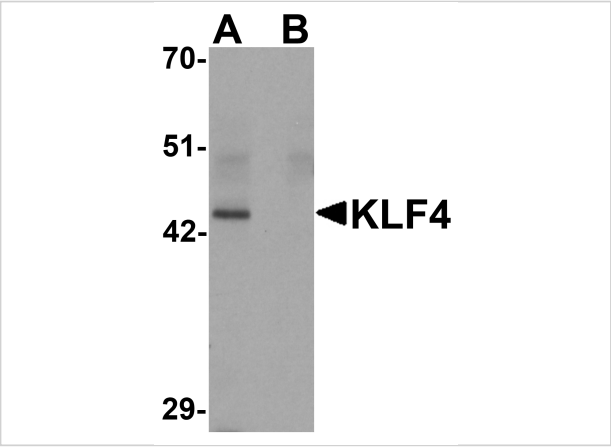
CATALOG NUMBER: PM-6142

Specifications

Host Species	Mouse
Species Reactivity	Human, Mouse, Rat
Immunogen	KLF4 antibody was raised against a 20 amino acid synthetic peptide near the carboxy terminus of human KLF4.
Conjugate	Unconjugated
Tested Applications	ELISA, WB
User Note	Optimal dilutions for each application to be determined by the researcher.
Specificity	At least three isoforms of KLF4 are known to exist; this antibody will detect all three. KLF4 antibody will not cross-react with other Kruppel-like family members.

Properties

Purification	KLF4 Monoclonal Antibody is affinity chromatography purified via peptide column.
Clonality	Monoclonal
Isotype	IgG1
Physical State	Liquid
Buffer	KLF4 Monoclonal Antibody is supplied in PBS containing 0.02% sodium azide.
Concentration	1 mg/mL
Storage Conditions	KLF4 monoclonal antibody can be stored at -20°C, stable for one year.



KLF4 Antibody [4E5C3] 1

Western blot analysis of KLF4 in mouse liver tissue lysate with KLF4 antibody at 1 µg/mL in (A) the absence and (B) the presence of blocking peptide.

Disclaimer

Disclaimer	Optimal dilutions/concentrations should be determined by the end user. The information provided is a guideline for product use. This product is for research use only.
------------	--

For research use only. For additional information, visit ProSci's [Terms and Conditions Page](#).