

ORAI1 Antibody [6D11A11]

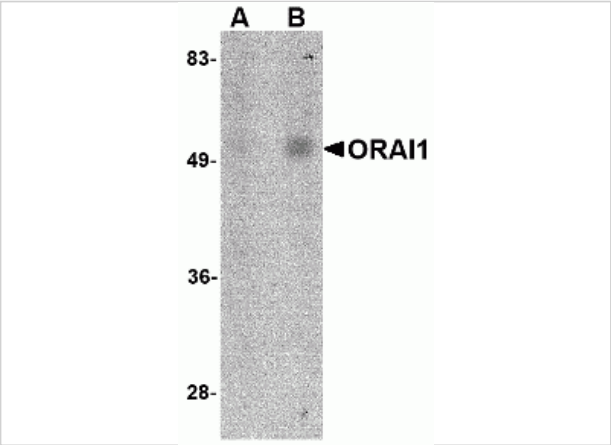
CATALOG NUMBER: PM-5207

Specifications

Host Species	Mouse
Species Reactivity	Human, Mouse, Rat
Immunogen	Mouse monoclonal ORAI1 antibody was raised against a 16 amino acid synthetic peptide from near the carboxy terminus of human ORAI1.
Conjugate	Unconjugated
Tested Applications	ELISA, IF, IHC-P, WB
User Note	Optimal dilutions for each application to be determined by the researcher.
Specificity	ORAI1 antibody is predicted to have no cross-reactivity to ORAI2 or ORAI3.
Predicted Molecular Weight	Predicted: 33 kDa Observed: 50 kDa

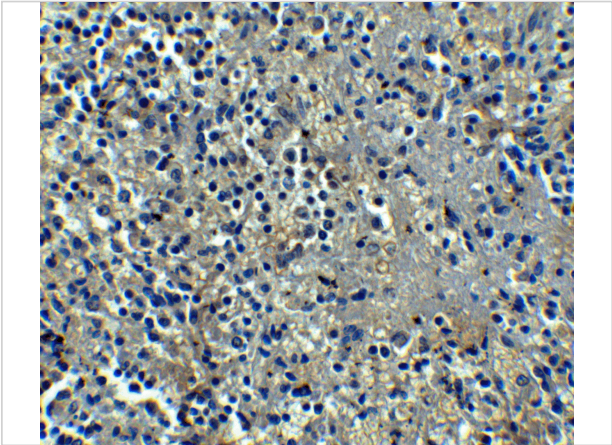
Properties

Purification	ORAI1 Monoclonal Antibody is Protein A purified.
Clonality	Monoclonal
Isotype	IgG2b
Physical State	Liquid
Buffer	ORAI1 Monoclonal Antibody is supplied in PBS containing 0.02% sodium azide.
Concentration	1 mg/mL
Storage Conditions	ORAI1 monoclonal antibody can be stored at -20°C, stable for one year.



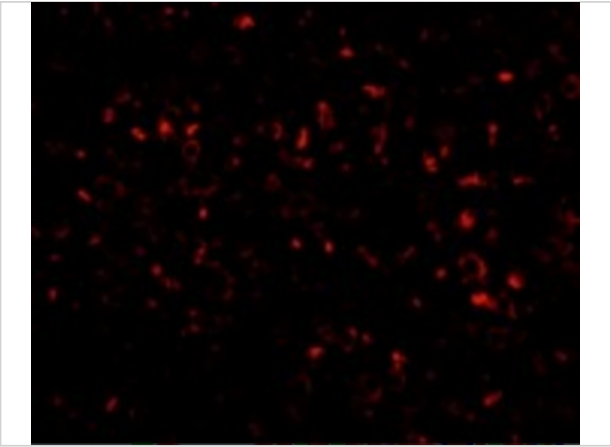
ORAI1 Antibody [6D11A11] 1

Western blot analysis of ORAI1 in human spleen tissue lysate with ORAI1 antibody at (A) 1 and (B) 2 µg/mL.



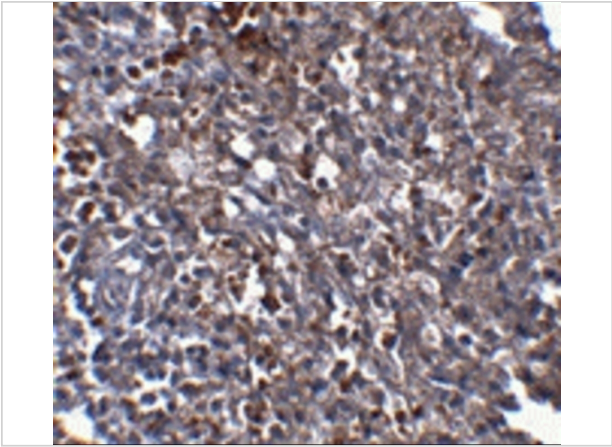
ORAI1 Antibody [6D11A11] 2

Immunohistochemistry of ORAI1 in human spleen tissue with ORAI1 antibody at 5 µg/mL.



ORAI1 Antibody [6D11A11] 3

Immunofluorescence of ORAI1 in Human Spleen tissue with ORAI1 antibody at 20 ug/mL.



ORAI1 Antibody [6D11A11] 4

Immunohistochemistry of ORAI1 in human spleen tissue with ORAI1 antibody at 2.5 µg/mL.

Disclaimer

Disclaimer	Optimal dilutions/concentrations should be determined by the end user. The information provided is a guideline for product use. This product is for research use only.
------------	--

For research use only. For additional information, visit ProSci's [Terms and Conditions Page](#).