

ORAI1 Antibody [3F6H5]

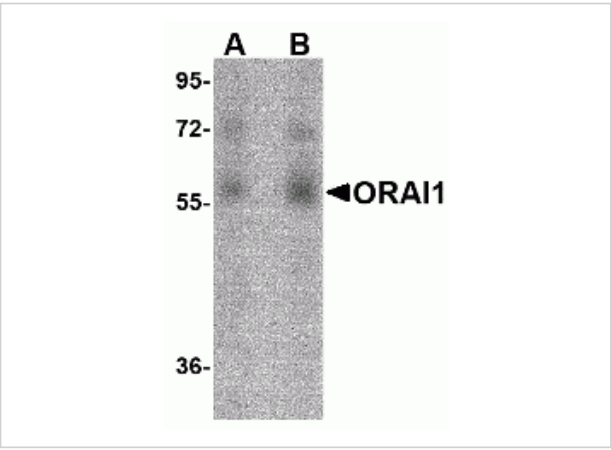
CATALOG NUMBER: PM-5205

Specifications

Host Species	Mouse
Species Reactivity	Human, Mouse, Rat
Immunogen	Mouse monoclonal ORAI1 antibody was raised against a 16 amino acid synthetic peptide from near the carboxy terminus of human ORAI1.
Conjugate	Unconjugated
Tested Applications	ELISA, IF, IHC-P, WB
User Note	Optimal dilutions for each application to be determined by the researcher.
Specificity	ORAI1 antibody is predicted to have no cross reactivity to other members in the ORAI family.
Predicted Molecular Weight	Predicted: 33 kDa Observed: 56 kDa

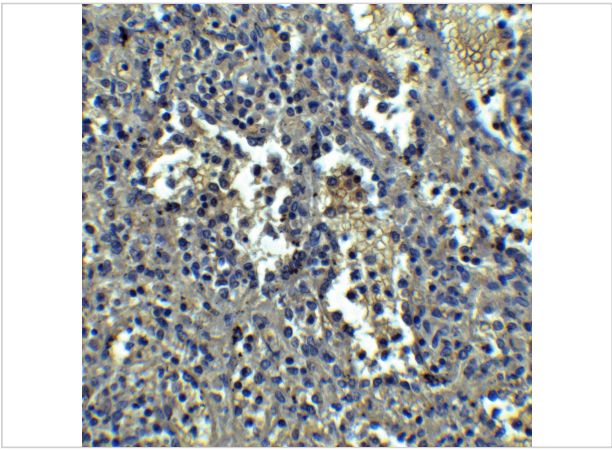
Properties

Purification	ORAI1 Monoclonal Antibody is Protein A purified.
Clonality	Monoclonal
Isotype	IgG1
Physical State	Liquid
Buffer	ORAI1 Monoclonal Antibody is supplied in PBS containing 0.02% sodium azide.
Concentration	1 mg/mL
Storage Conditions	ORAI1 monoclonal antibody can be stored at -20°C, stable for one year.



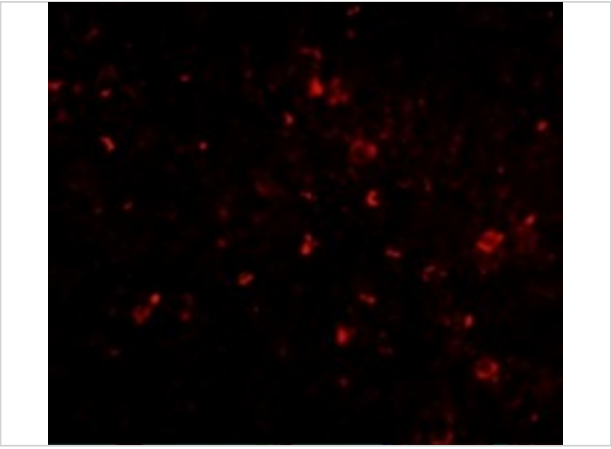
ORAI1 Antibody [3F6H5] 1

Western blot analysis of ORAI1 in human ovary tissue lysate with ORAI1 antibody at (A) 1 and (B) 2 µg/mL.



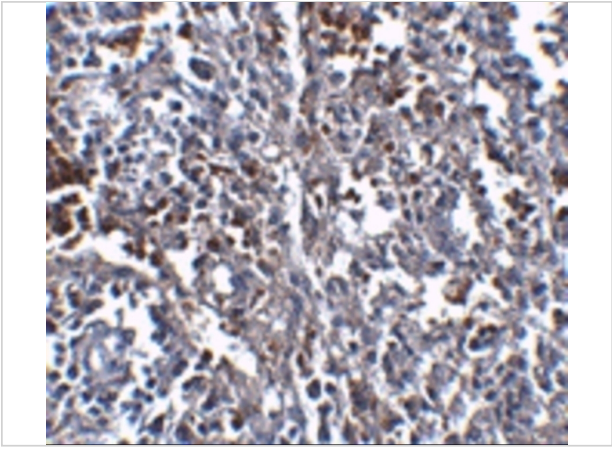
ORAI1 Antibody [3F6H5] 2

Immunohistochemistry of ORAI1 in human spleen tissue with ORAI1 antibody at 5 µg/mL.



ORAI1 Antibody [3F6H5] 3

Immunofluorescence of ORAI1 in human spleen tissue with ORAI1 antibody at 20 µg/mL.



ORAI1 Antibody [3F6H5] 4

Immunohistochemistry of ORAI1 in human spleen tissue with ORAI1 antibody at 2.5 µg/mL.

Disclaimer

Disclaimer	Optimal dilutions/concentrations should be determined by the end user. The information provided is a guideline for product use. This product is for research use only.
-------------------	--

For research use only. For additional information, visit ProSci's [Terms and Conditions Page](#).