



ProSci Incorporated
12170 Flint Place
Poway, CA 92064, USA
prosci-inc.com

P: +1 (888) 513-9525
Local: +1 (858) 513-2638
Fax: +1 (858) 513-2692

customercare@prosci-inc.com
techsupport@prosci-inc.com

PD-1 Antibody [7A11B1]

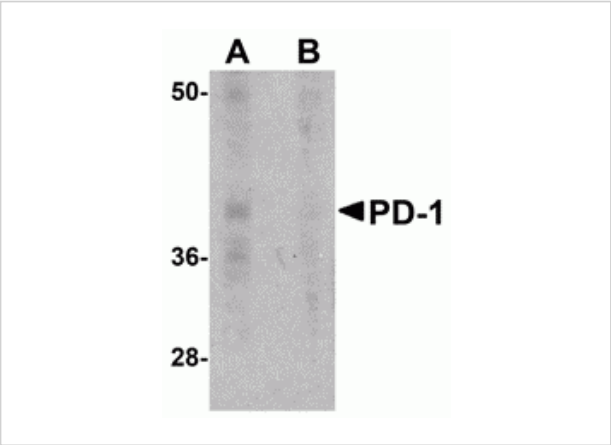
CATALOG NUMBER: PM-5177

Specifications

Host Species	Mouse
Species Reactivity	Human, Mouse, Rat
Immunogen	A ~150 amino acid recombinant protein from near the amino terminus of mouse PD-1.
Conjugate	Unconjugated
Tested Applications	ELISA, IF, IHC-P, WB
User Note	Optimal dilutions for each application to be determined by the researcher.

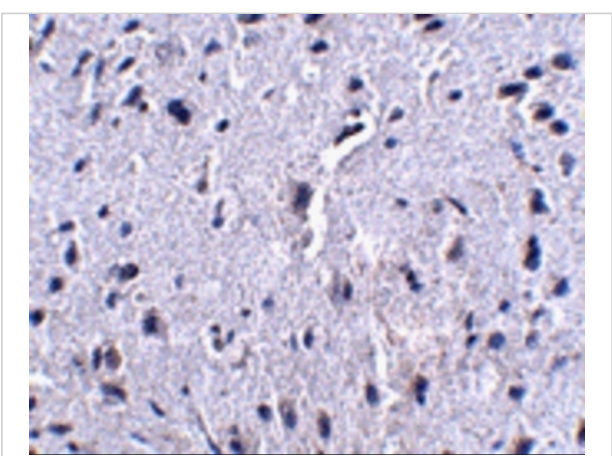
Properties

Purification	PD-1 Monoclonal Antibody is Protein A purified.
Clonality	Monoclonal
Isotype	IgG1
Physical State	Liquid
Buffer	PD-1 Monoclonal Antibody is supplied in PBS containing 0.02% sodium azide.
Concentration	1 mg/mL
Storage Conditions	PD-1 monoclonal antibody can be stored at -20°C, stable for one year.



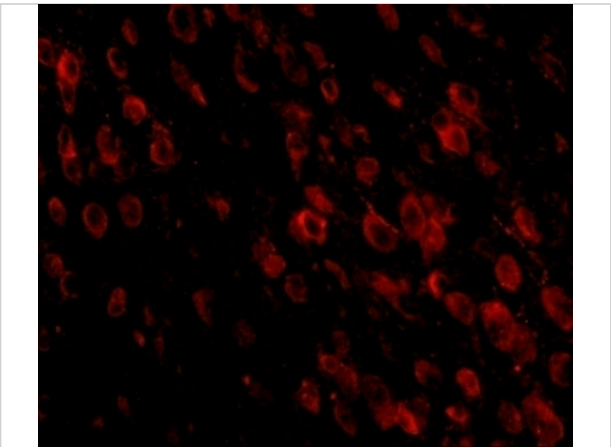
PD-1 Antibody [7A11B1] 1

Western blot analysis of PD-1 in A-20 cell lysate with PD-1 antibody at 1 µg/mL in the (A) absence and (B) presence of blocking recombinant protein.



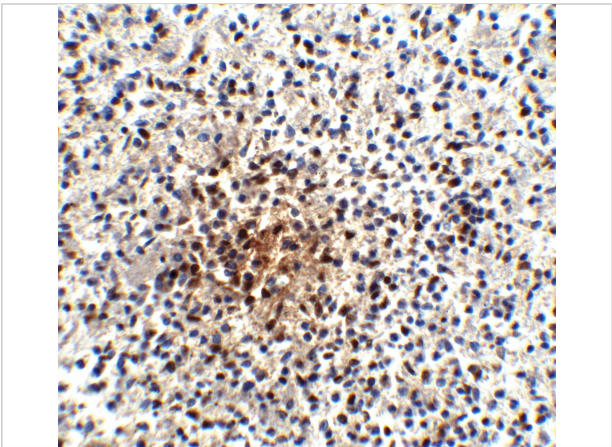
PD-1 Antibody [7A11B1] 2

Immunohistochemistry of PD-1 in mouse brain tissue with PD-1 antibody at 2.5 µg/mL.



PD-1 Antibody [7A11B1] 3

Immunofluorescence of PD-1 in mouse brain tissue with PD-1 antibody at 20 µg/mL.



PD-1 Antibody [7A11B1] 4

Immunohistochemistry of PD-1 in human spleen tissue with PD-1 antibody at 25 µg/ml.

Disclaimer

Disclaimer	Optimal dilutions/concentrations should be determined by the end user. The information provided is a guideline for product use. This product is for research use only.
------------	--

For research use only. For additional information, visit ProSci's [Terms and Conditions Page](#).