



ProSci Incorporated
12170 Flint Place
Poway, CA 92064, USA
prosci-inc.com

P: +1 (888) 513-9525
Local: +1 (858) 513-2638
Fax: +1 (858) 513-2692

customercare@prosci-inc.com
techsupport@prosci-inc.com

MD-2 Antibody [9F1B1]

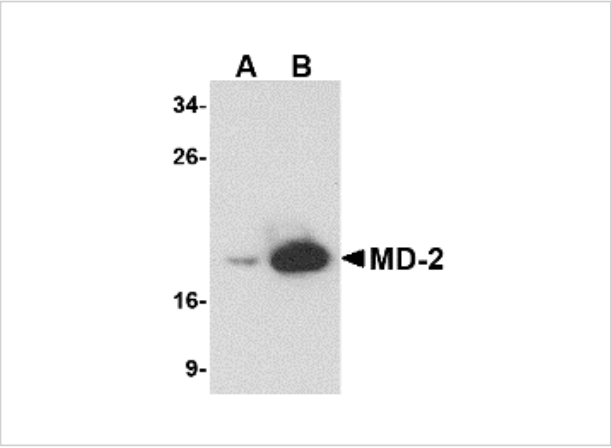
CATALOG NUMBER: PM-4845

Specifications

Host Species	Mouse
Species Reactivity	Human, Mouse
Immunogen	Mouse monoclonal MD-2 antibody was raised against a recombinant protein corresponding to amino acids 2 to 160 of human MD-2.
Conjugate	Unconjugated
Tested Applications	ELISA, IF, IHC-P, WB
User Note	Optimal dilutions for each application to be determined by the researcher.

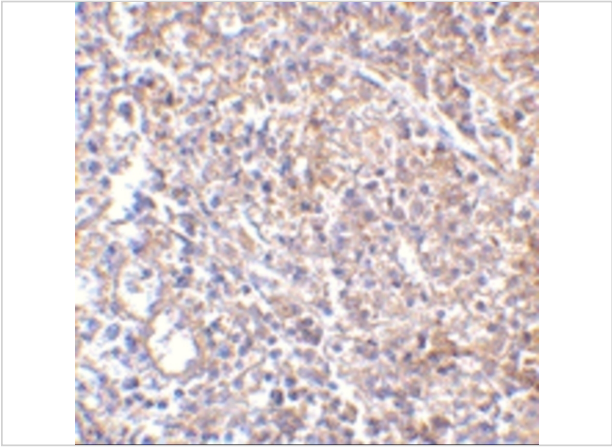
Properties

Purification	MD-2 Monoclonal Antibody is immunoaffinity chromatography purified IgG.
Clonality	Monoclonal
Isotype	IgG1
Physical State	Liquid
Buffer	MD-2 Monoclonal Antibody is supplied in PBS containing 0.02% sodium azide.
Concentration	1 mg/mL
Storage Conditions	MD-2 monoclonal antibody can be stored at -20°C, stable for one year.



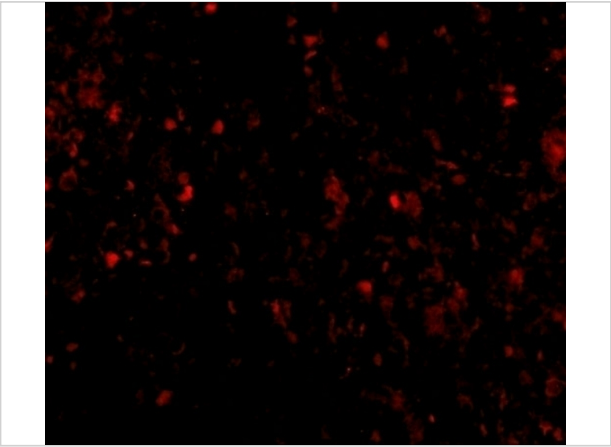
MD-2 Antibody [9F1B1] 1

Western blot analysis of (A) 25 and (B) 125 ng of MD-2 recombinant protein with MD-2 antibody at 1 µg/mL.



MD-2 Antibody [9F1B1] 2

Immunohistochemistry of MD-2 in human spleen with MD-2 antibody at 2.5 µg/mL.



MD-2 Antibody [9F1B1] 3

Immunofluorescence of MD2 in human spleen tissue with MD2 antibody at 20 µg/mL.

Disclaimer

Disclaimer	Optimal dilutions/concentrations should be determined by the end user. The information provided is a guideline for product use. This product is for research use only.
------------	--

For research use only. For additional information, visit ProSci's [Terms and Conditions Page](#).