



ProSci Incorporated  
12170 Flint Place  
Poway, CA 92064, USA  
prosci-inc.com

P: +1 (888) 513-9525  
Local: +1 (858) 513-2638  
Fax: +1 (858) 513-2692

customercare@prosci-inc.com  
techsupport@prosci-inc.com

## Bim Antibody [1C2H4]

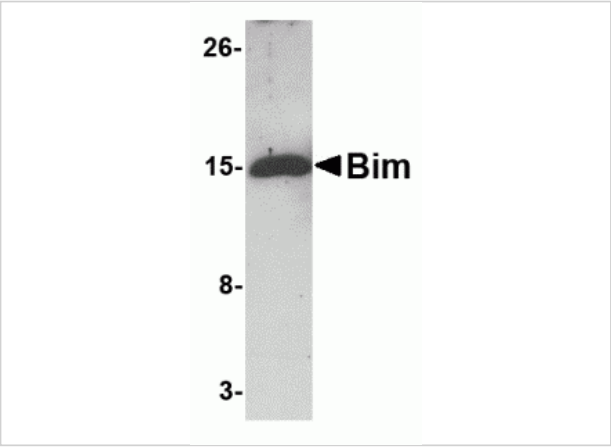
CATALOG NUMBER: PM-4821

### Specifications

Host Species	Mouse
Species Reactivity	Human, Mouse, Rat
Immunogen	Mouse monoclonal Bim antibody was raised against a recombinant protein corresponding to amino acids 2 to 198 of human Bim.
Conjugate	Unconjugated
Tested Applications	ELISA, ICC, IF, WB
User Note	Optimal dilutions for each application to be determined by the researcher.

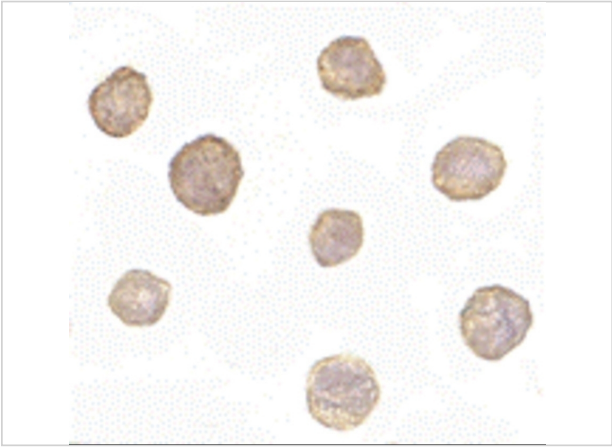
### Properties

Purification	Bim Monoclonal Antibody is Protein A purified.
Clonality	Monoclonal
Isotype	IgG1
Physical State	Liquid
Buffer	Bim Monoclonal Antibody is supplied in PBS containing 0.02% sodium azide.
Concentration	1 mg/mL
Storage Conditions	Bim monoclonal antibody can be stored at -20°C, stable for one year.



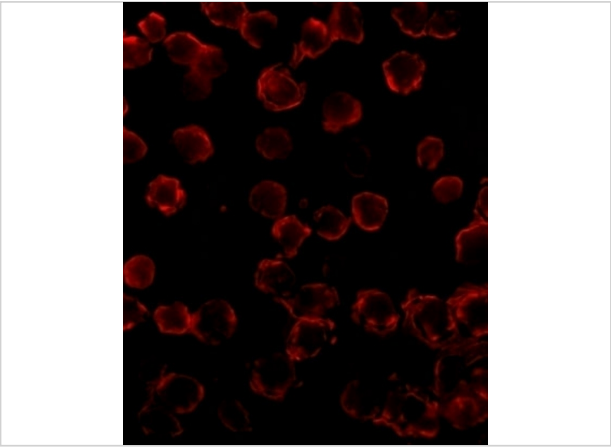
**Bim Antibody [1C2H4] 1**

Western blot analysis of 5 ng of Bim recombinant protein with Bim antibody at 1 µg/mL.



**Bim Antibody [1C2H4] 2**

Immunocytochemistry of Bim in K562 cells with Bim antibody at 10 µg/mL.



**Bim Antibody [1C2H4] 3**

Immunofluorescence of Bim in K562 cells with Bim antibody at 20 µg/mL.

**Disclaimer**

<b>Disclaimer</b>	Optimal dilutions/concentrations should be determined by the end user. The information provided is a guideline for product use. This product is for research use only.
-------------------	--

For research use only. For additional information, visit ProSci's [Terms and Conditions Page](#).