

Bim Antibody [1C2C8]

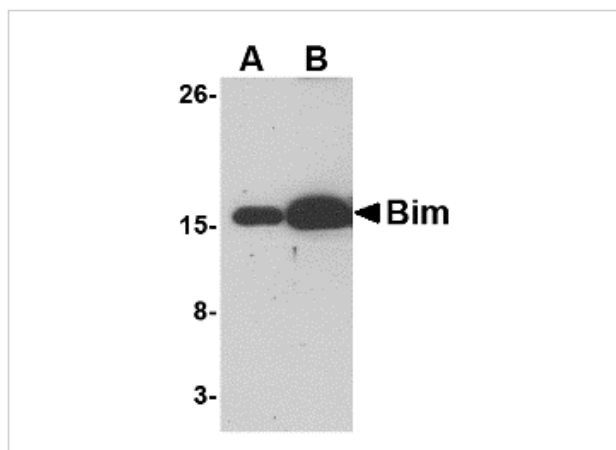
CATALOG NUMBER: PM-4819

Specifications

| | |
|---------------------|--|
| Host Species | Mouse |
| Species Reactivity | Human, Mouse |
| Immunogen | Mouse monoclonal Bim antibody was raised against a recombinant protein corresponding to amino acids 2 to 198 of human Bim. |
| Conjugate | Unconjugated |
| Tested Applications | ELISA, ICC, IF, WB |
| User Note | Optimal dilutions for each application to be determined by the researcher. |

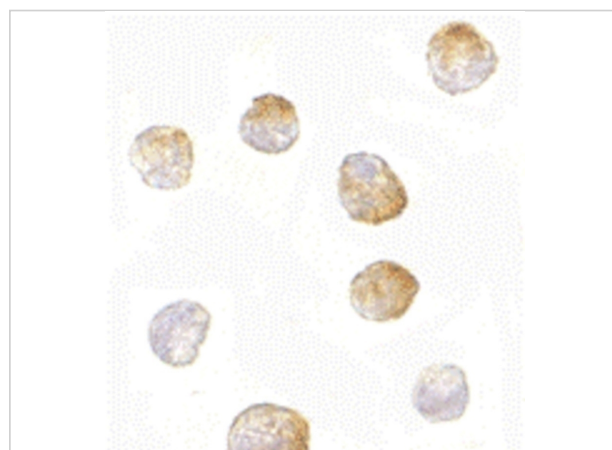
Properties

| | |
|--------------------|---|
| Purification | Bim Monoclonal Antibody is immunoaffinity chromatography purified IgG. |
| Clonality | Monoclonal |
| Isotype | IgG1 |
| Physical State | Liquid |
| Buffer | Bim Monoclonal Antibody is supplied in PBS containing 0.02% sodium azide. |
| Concentration | 1 mg/mL |
| Storage Conditions | Bim monoclonal antibody can be stored at -20°C, stable for one year. |



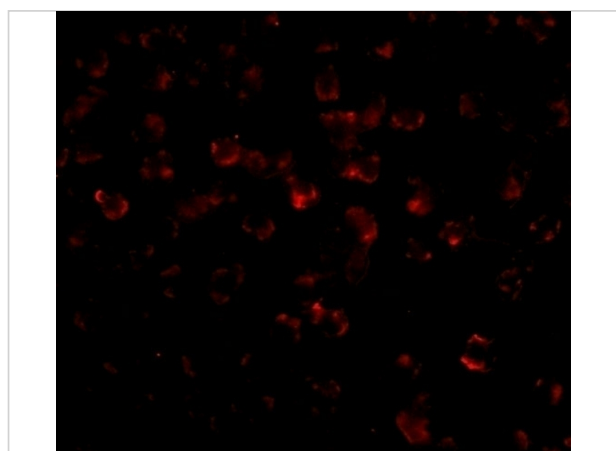
Bim Antibody [1C2C8] 1

Western blot analysis of (A) 5 and (B) 25 ng of Bim recombinant protein with Bim antibody at 1 µg/mL.



Bim Antibody [1C2C8] 2

Immunocytochemistry of Bim in K562 cells with Bim antibody at 10 µg/mL.



Bim Antibody [1C2C8] 3

Immunofluorescence of Bim in K562 cells with Bim antibody at 20 µg/mL.

Disclaimer

Disclaimer

Optimal dilutions/concentrations should be determined by the end user. The information provided is a guideline for product use. This product is for research use only.

For research use only. For additional information, visit ProSci's [Terms and Conditions Page](#).