



ProSci Incorporated
12170 Flint Place
Poway, CA 92064, USA
prosci-inc.com

P: +1 (888) 513-9525
Local: +1 (858) 513-2638
Fax: +1 (858) 513-2692

customercare@prosci-inc.com
techsupport@prosci-inc.com

PUMA Antibody [2A8F6]

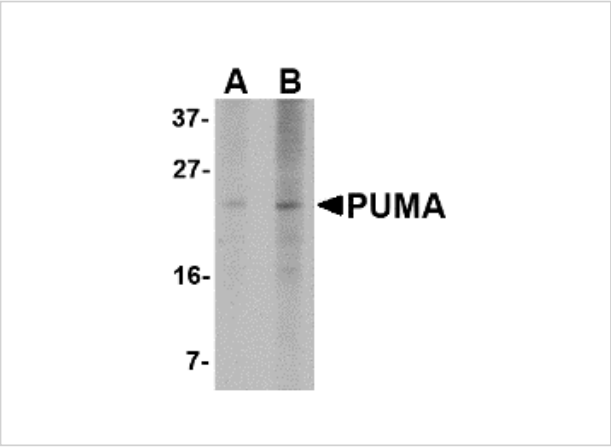
CATALOG NUMBER: PM-4523

Specifications

Host Species	Mouse
Species Reactivity	Human, Rat
Immunogen	Recombinant protein corresponding to amino acids 76 - 170 of human PUMA-alpha.
Conjugate	Unconjugated
Tested Applications	ELISA, WB
User Note	Optimal dilutions for each application to be determined by the researcher.

Properties

Purification	PUMA Monoclonal Antibody is immunoaffinity chromatography purified IgG.
Clonality	Monoclonal
Isotype	IgG1
Physical State	Liquid
Buffer	PUMA Monoclonal Antibody is supplied in PBS containing 0.02% sodium azide.
Concentration	1 mg/mL
Storage Conditions	PUMA monoclonal antibody can be stored at -20°C, stable for one year.



PUMA Antibody [2A8F6] 1

Western blot analysis of PUMA expression in K562 cell lysate with PUMA antibody at (A) 2.5 and (B) 5 µg/mL.

Disclaimer

Disclaimer	Optimal dilutions/concentrations should be determined by the end user. The information provided is a guideline for product use. This product is for research use only.
------------	--

For research use only. For additional information, visit ProSci's [Terms and Conditions Page](#).