



ProSci Incorporated
12170 Flint Place
Poway, CA 92064, USA
prosci-inc.com

P: +1 (888) 513-9525
Local: +1 (858) 513-2638
Fax: +1 (858) 513-2692

customercare@prosci-inc.com
techsupport@prosci-inc.com

MDA5 Antibody

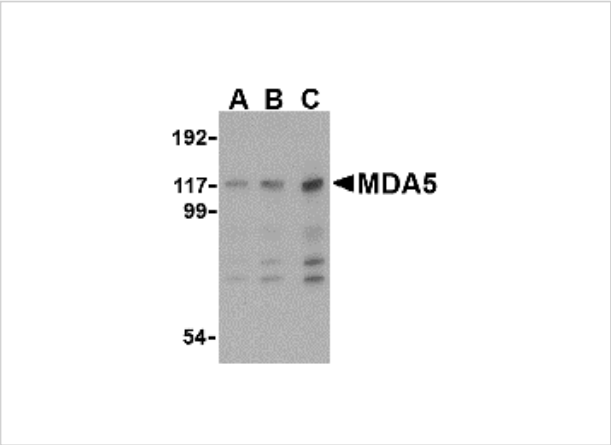
CATALOG NUMBER: 4039

Specifications

Host Species	Rabbit
Species Reactivity	Human, Mouse
Immunogen	MDA5 antibody was raised against a 16 amino acid synthetic peptide from near the center of human MDA5. The immunogen is located within amino acids 330 - 380 of MDA5.
Conjugate	Unconjugated
Tested Applications	ELISA, IF, IHC-P, WB
User Note	Optimal dilutions for each application to be determined by the researcher.

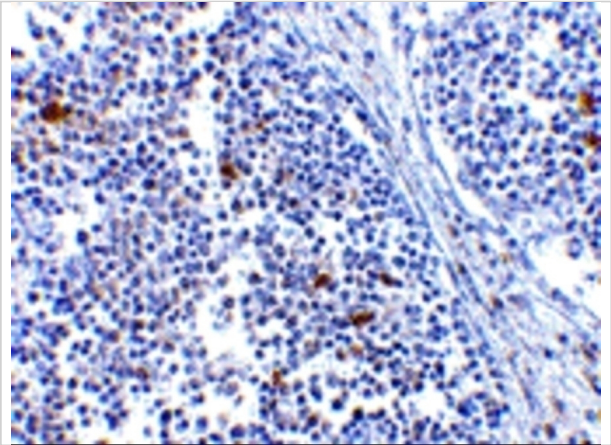
Properties

Purification	MDA5 Antibody is affinity chromatography purified via peptide column.
Clonality	Polyclonal
Isotype	IgG
Physical State	Liquid
Buffer	MDA5 Antibody is supplied in PBS containing 0.02% sodium azide.
Concentration	1 mg/mL
Storage Conditions	MDA5 antibody can be stored at 4°C for three months and -20°C, stable for up to one year. As with all antibodies care should be taken to avoid repeated freeze thaw cycles. Antibodies should not be exposed to prolonged high temperatures.



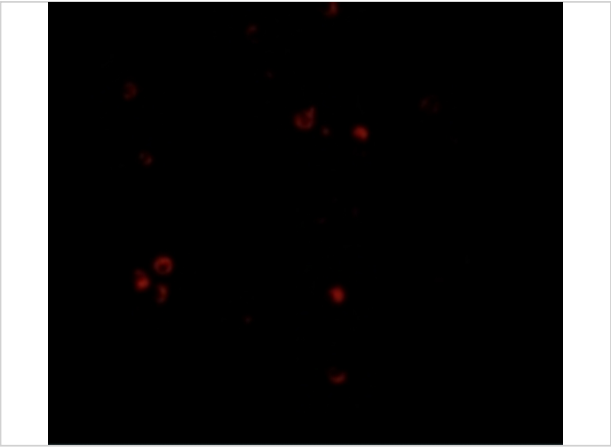
MDA5 Antibody 1

Western blot analysis of MDA5 in Daudi cell lysate with MDA5 antibody at (A) 1, (B) 2 and (C) 4 µg/mL.



MDA5 Antibody 2

Immunohistochemistry of MDA5 in human lymph node tissue with MDA5 antibody at 5 µg/mL.



MDA5 Antibody 3

Immunofluorescence of MDA5 in Human Lymph Node cells with MDA5 antibody at 20 µg/mL.

Disclaimer

Disclaimer	Optimal dilutions/concentrations should be determined by the end user. The information provided is a guideline for product use. This product is for research use only.
------------	--

For research use only. For additional information, visit ProSci's [Terms and Conditions Page](#).