



ProSci Incorporated
12170 Flint Place
Poway, CA 92064, USA
prosci-inc.com

P: +1 (888) 513-9525
Local: +1 (858) 513-2638
Fax: +1 (858) 513-2692

customercare@prosci-inc.com
techsupport@prosci-inc.com

DC-SIGN Antibody [5D7]

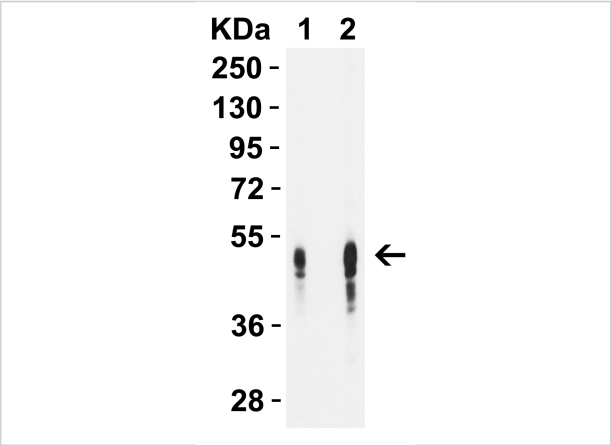
CATALOG NUMBER: PM-2347

Specifications

| | |
|----------------------------|---|
| Host Species | Mouse |
| Species Reactivity | Human |
| Immunogen | A recombinant His-tagged protein fragment corresponding to the extracellular region of human DC-SIGN. |
| Conjugate | Unconjugated |
| Tested Applications | ELISA, IHC-P, WB |
| User Note | Optimal dilutions for each application to be determined by the researcher. |
| Predicted Molecular Weight | Predicted: 44 kDa Observed: 47 kDa |

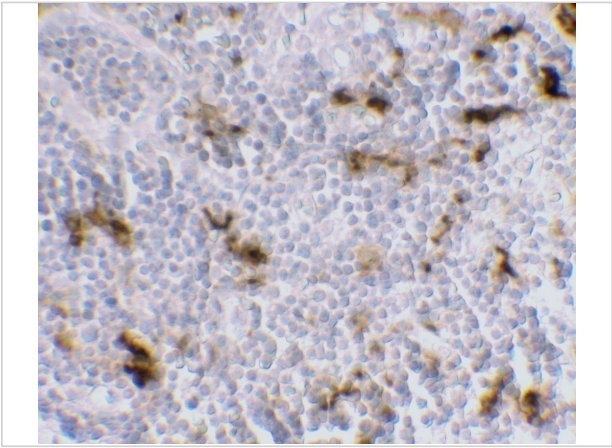
Properties

| | |
|--------------------|---|
| Purification | DC-SIGN Monoclonal Antibody is immunoaffinity chromatography purified IgG. |
| Clonality | Monoclonal |
| Isotype | IgG1 |
| Physical State | Liquid |
| Buffer | DC-SIGN Monoclonal Antibody is supplied in PBS containing 0.02% sodium azide. |
| Concentration | 1 mg/mL |
| Storage Conditions | DC-SIGN monoclonal antibody can be stored at -20°C, stable for one year. |



DC-SIGN Antibody [5D7] 1

Figure 1 WB Validation of DC-SIGN in Human Lymph Node
Loading: 10 µg of lysate per lane. Antibodies: DC-SIGN PM-2347, 1ug/ml, 1h incubation at RT in 5% NFDm/TBST. Secondary: G...



DC-SIGN Antibody [5D7] 2

Immunohistochemistry of DC-SIGN in human lymph node tissue with DC-SIGN antibody at 5 µg/mL.

Disclaimer

| | |
|------------|--|
| Disclaimer | Optimal dilutions/concentrations should be determined by the end user. The information provided is a guideline for product use. This product is for research use only. |
|------------|--|

For research use only. For additional information, visit ProSci's [Terms and Conditions Page](#).