



ProSci Incorporated  
12170 Flint Place  
Poway, CA 92064, USA  
prosci-inc.com

P: +1 (888) 513-9525  
Local: +1 (858) 513-2638  
Fax: +1 (858) 513-2692

customercare@prosci-inc.com  
techsupport@prosci-inc.com

## Apaf-1 Antibody [2E10]

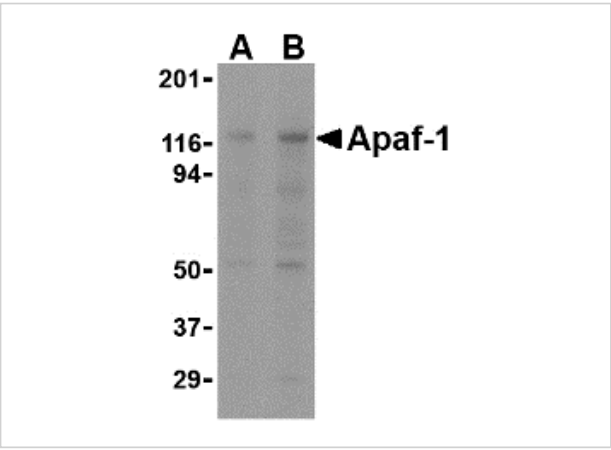
CATALOG NUMBER: PM-2015

### Specifications

Host Species	Mouse
Species Reactivity	Human, Mouse, Rat
Immunogen	A peptide corresponding to amino acids near the carboxy terminus of human Apaf1.
Conjugate	Unconjugated
Tested Applications	ELISA, IHC-P, WB
User Note	Optimal dilutions for each application to be determined by the researcher.
Predicted Molecular Weight	130 kDa

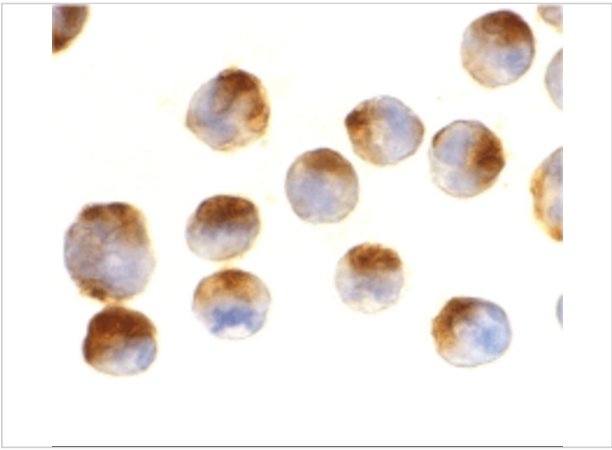
### Properties

Purification	Apaf-1 Monoclonal Antibody is immunoaffinity chromatography purified IgG.
Clonality	Monoclonal
Isotype	IgG1
Physical State	Liquid
Buffer	Apaf-1 Monoclonal Antibody is supplied in PBS containing 0.02% sodium azide.
Concentration	1 mg/mL
Storage Conditions	Apaf-1 monoclonal antibody can be stored at -20°C, stable for one year.



Apaf-1 Antibody [2E10] 1

Western blot analysis of Apaf1 in K562 cell lysate with Apaf1 antibody at (A) 0.25 and (B) 0.5 mg/mL.



Apaf-1 Antibody [2E10] 2

Immunohistochemistry of Apaf1 in K562 cells with Apaf1 antibody at 0.5 µg/mL.

Disclaimer

Disclaimer	Optimal dilutions/concentrations should be determined by the end user. The information provided is a guideline for product use. This product is for research use only.
------------	--

For research use only. For additional information, visit ProSci's [Terms and Conditions Page](#).