

PEX3 (CT) Antibody

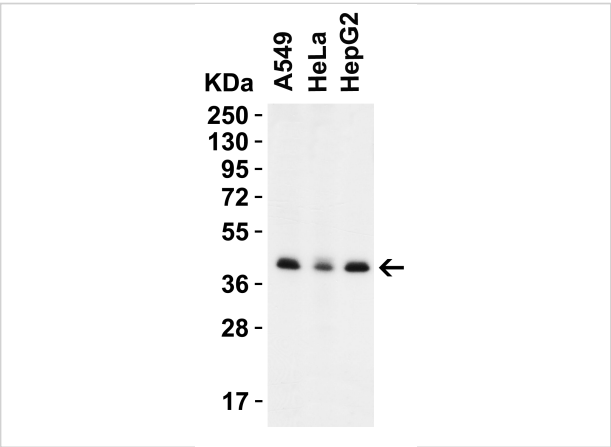
CATALOG NUMBER: 9665

Specifications

Host Species	Rabbit
Species Reactivity	Human, Mouse, Rat
Homology	Predicted species reactivity based on immunogen sequence: monkey (100%), cow (100%)
Immunogen	Anti-PEX3 antibody (9665) was raised against a peptide corresponding to 12 amino acids near the carboxyl terminal of human PEX3. The immunogen is located within last 50 amino acids of PEX3.
Conjugate	Unconjugated
Tested Applications	ELISA, IF, WB
User Note	Optimal dilutions for each application to be determined by the researcher.
Predicted Molecular Weight	Predicted: 42kD Observed: 42 kD

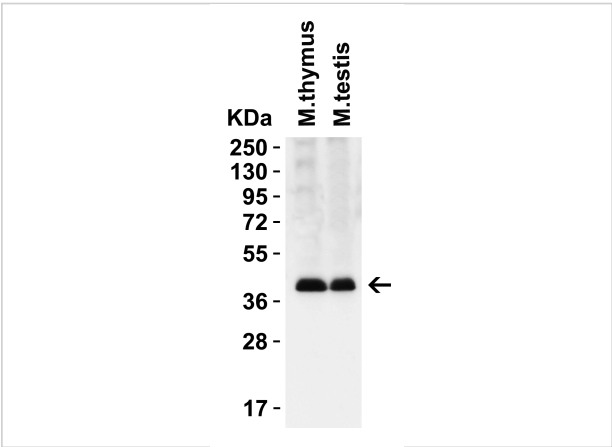
Properties

Purification	PEX3 Antibody is affinity chromatography purified via peptide column.
Clonality	Polyclonal
Isotype	IgG
Physical State	Liquid
Buffer	PEX3 Antibody is supplied in PBS containing 0.02% sodium azide.
Concentration	1 mg/mL
Storage Conditions	PEX3 antibody can be stored at 4 °C for three months and -20 °C, stable for up to one year. As with all antibodies care should be taken to avoid repeated freeze thaw cycles. Antibodies should not be exposed to prolonged high temperatures.



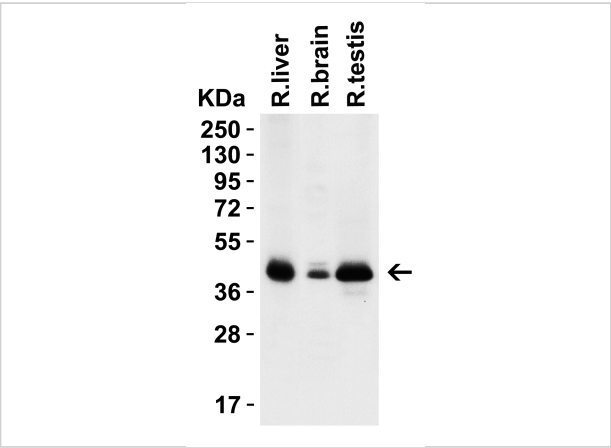
PEX3 (CT) Antibody 1

Figure 1 WB Validation in Human Cell Lines
 Loading: 15 µg of lysate Antibodies: PEX3 9665, 2 µg/mL, 1 h incubation at RT in 5% NFDm/TBST. Secondary: Goat Anti-Rabbit IgG HRP ...



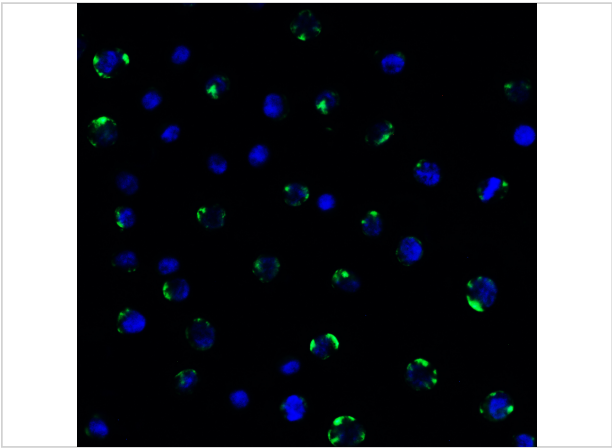
PEX3 (CT) Antibody 2

Figure 2 Western Blot Validation in Mouse Tissues
 Loading: 15 µg of lysates per lane. Antibodies: PEX3 9665, 2 µg/mL, 1 h incubation at RT in 5% NFDm/TBST. Secondary: Goat anti-ra...



PEX3 (CT) Antibody 3

Figure 3 Western Blot Validation in Rat Tissues
 Loading: 15 µg of lysates per lane. Antibodies: PEX3 9665, 2 µg/mL, 1 h incubation at RT in 5% NFDm/TBST. Secondary: Goat anti-rabbi...



PEX3 (CT) Antibody 4

Figure 4 Immunofluorescence Validation of PEX3 in Human HeLa Cells
 Immunofluorescent analysis of 4% paraformaldehyde-fixed HeLa cells labeling PEX3 with 9665 at 20 µg/mL, follow...

Disclaimer

Disclaimer	Optimal dilutions/concentrations should be determined by the end user. The information provided is a guideline for product use. This product is for research use only.
-------------------	--

For research use only. For additional information, visit ProSci's [Terms and Conditions Page](#).