

## AIFM2 (IN) Antibody

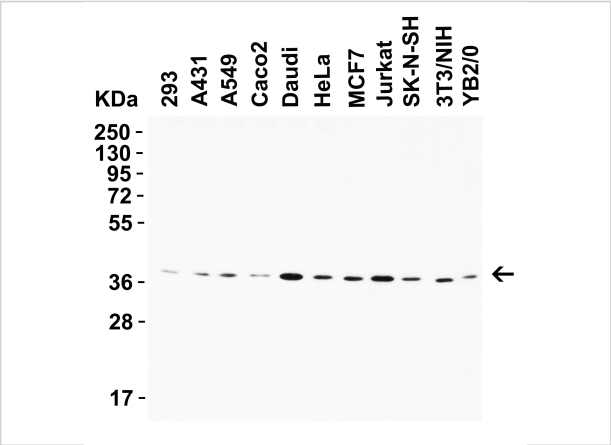
CATALOG NUMBER: 9655

### Specifications

Host Species	Rabbit
Species Reactivity	Human, Mouse, Rat
Homology	Predicted species reactivity based on immunogen sequence: Gorilla (100%); chimpanzee (100%), cow (100%), Horse (93%)
Immunogen	Anti-AIFM2 antibody ( <b>9655</b> ) was raised against a peptide corresponding to 14 amino acids near the center of human AIFM2. The immunogen is located within 130-180 amino acids of AIFM2.
Conjugate	Unconjugated
Tested Applications	ELISA, IF, IHC, WB
User Note	Optimal dilutions for each application to be determined by the researcher.
Predicted Molecular Weight	Predicted: 41kD Observed: 40 kD

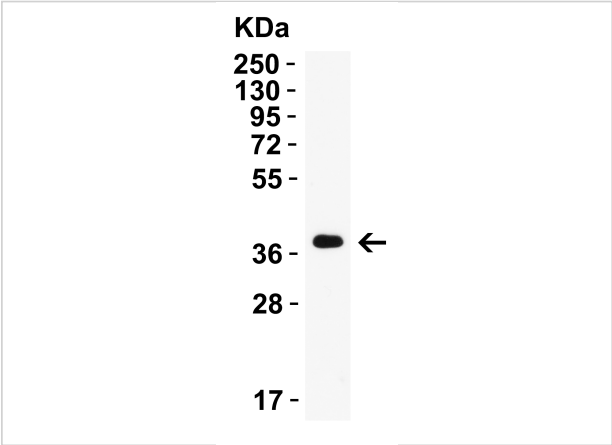
### Properties

Purification	AIFM2 Antibody is affinity chromatography purified via peptide column.
Clonality	Polyclonal
Isotype	IgG
Physical State	Liquid
Buffer	AIFM2 Antibody is supplied in PBS containing 0.02% sodium azide.
Concentration	1 mg/mL
Storage Conditions	AIFM2 antibody can be stored at 4°C for three months and -20°C, stable for up to one year. As with all antibodies care should be taken to avoid repeated freeze thaw cycles. Antibodies should not be exposed to prolonged high temperatures.



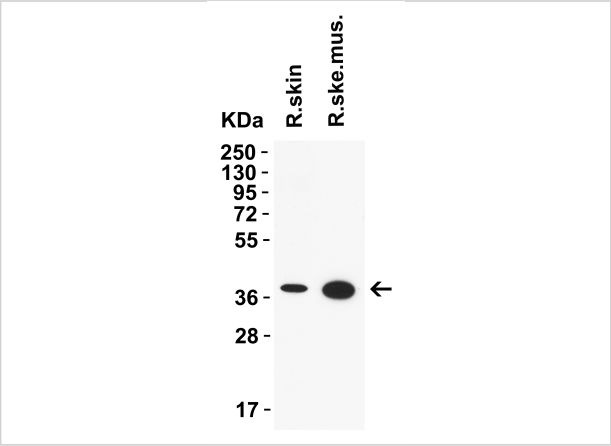
### AIFM2 (IN) Antibody 1

**Figure 1: WB Validation in Human Mouse and Rat Cell Lines**  
 Loading: 15 µg of lysate. Antibodies: AIFM2 9655, 2 µg/mL, 1h incubation at RT in 5% NFDm/TBST. Secondary: Goat An...



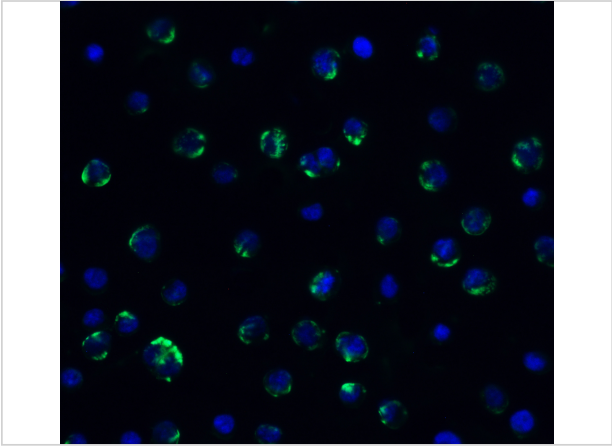
### AIFM2 (IN) Antibody 2

**Figure 2: WB Validation in Mouse Skeletal Muscle**  
 Loading: 15 µg of lysate. Antibodies: AIFM2 9655, 2 µg/mL, 1h incubation at RT in 5% NFDm/TBST. Secondary: Goat Anti-Rabbit...



### AIFM2 (IN) Antibody 3

**Figure 3: WB Validation in Rat Tissues**  
 Loading: 15 µg of lysate. Antibodies: AIFM2 9655, 2 µg/mL, 1h incubation at RT in 5% NFDm/TBST. Secondary: Goat Anti-Rabbit IgG HRP c...



### AIFM2 (IN) Antibody 4

**Figure 4: Immunofluorescence Validation of AIFM2 in HeLa Cells**  
 Immunofluorescent analysis of 4% paraformaldehyde-fixed HeLa cells labeling AIFM2 with 9655 at 20 µg/mL, followed ...

## Disclaimer

Disclaimer	Optimal dilutions/concentrations should be determined by the end user. The information provided is a guideline for product use. This product is for research use only.
------------	--

For research use only. For additional information, visit ProSci's [Terms and Conditions Page](#).