

Emerin Antibody

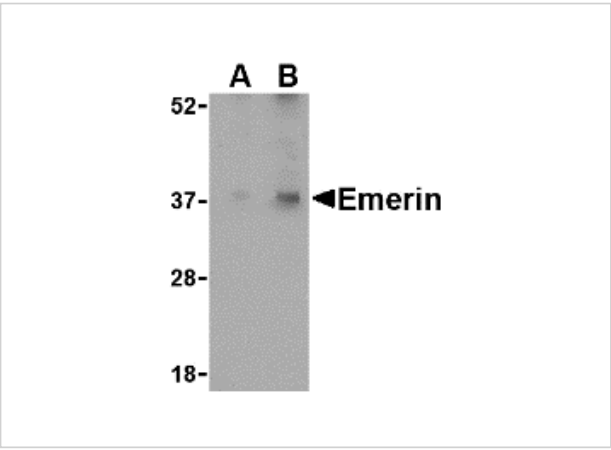
CATALOG NUMBER: 4031

Specifications

Host Species	Rabbit
Species Reactivity	Human, Mouse, Rat
Immunogen	Emerin antibody was raised against a 19 amino acid synthetic peptide from near the amino terminus of human Emerin. The immunogen is located within the first 50 amino acids of Emerin.
Conjugate	Unconjugated
Tested Applications	ELISA, IF, IHC-P, WB
User Note	Optimal dilutions for each application to be determined by the researcher.

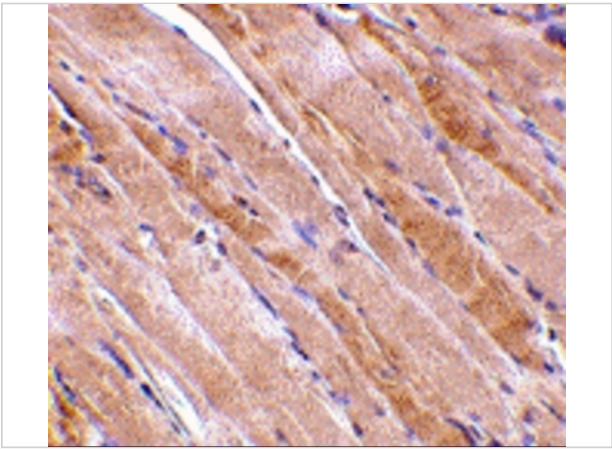
Properties

Purification	Emerin Antibody is affinity chromatography purified via peptide column.
Clonality	Polyclonal
Isotype	IgG
Physical State	Liquid
Buffer	Emerin Antibody is supplied in PBS containing 0.02% sodium azide.
Concentration	1 mg/mL
Storage Conditions	Emerin antibody can be stored at 4°C for three months and -20°C, stable for up to one year. As with all antibodies care should be taken to avoid repeated freeze thaw cycles. Antibodies should not be exposed to prolonged high temperatures.



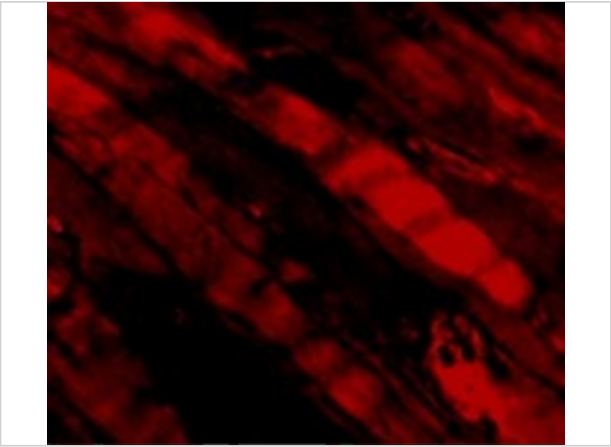
Emerin Antibody 1

Western blot analysis of Emerin in human skeletal muscle tissue lysate with Emerin antibody at (A) 0.5 and (B) 1 $\mu\text{g/mL}$.



Emerin Antibody 2

Immunohistochemistry of emerin in human skeletal muscle tissue with emerin antibody at 2.5 $\mu\text{g/mL}$.



Emerin Antibody 3

Immunofluorescence of Emerin in Human Skeletal Muscle cells with Emerin antibody at 5 $\mu\text{g/mL}$.

Disclaimer

Disclaimer	Optimal dilutions/concentrations should be determined by the end user. The information provided is a guideline for product use. This product is for research use only.
-------------------	--

For research use only. For additional information, visit ProSci's [Terms and Conditions Page](#).