

PGAM5 (CT) Antibody

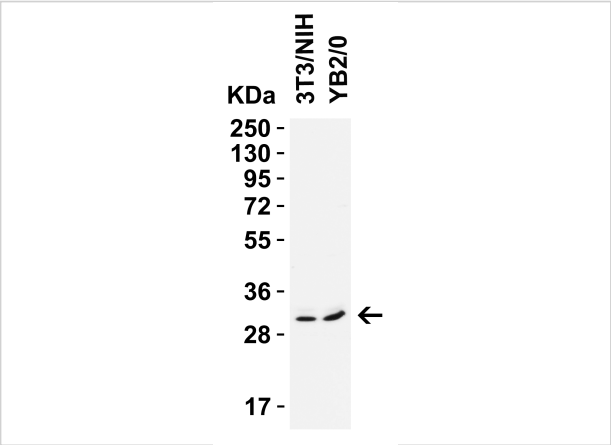
CATALOG NUMBER: 9517

Specifications

Host Species	Rabbit
Species Reactivity	Human, Mouse, Rat
Homology	Predicted species reactivity based on immunogen sequence: gorilla (100%); Chimpanzee (100%); monkey (100%).
Immunogen	Anti-PGAM5 antibody (9517) was raised against a peptide corresponding to 14 amino acids near the carboxyl terminus of human PGAM5. The immunogen is located within the last 50 amino acids of PGAM5.
Conjugate	Unconjugated
Tested Applications	ELISA, IF, WB
User Note	Optimal dilutions for each application to be determined by the researcher.
Predicted Molecular Weight	Predicted: 32kD Observed: 32 kD

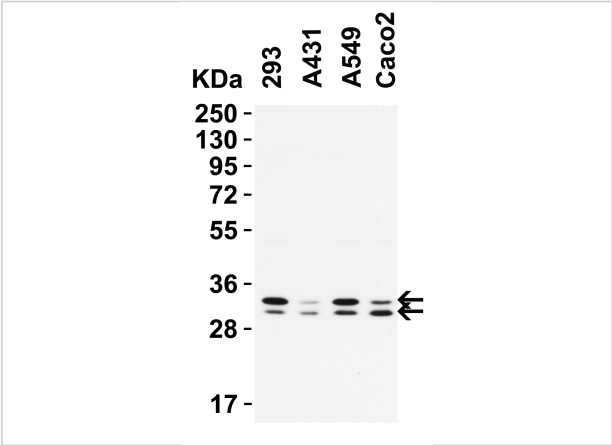
Properties

Purification	PGAM5 Antibody is affinity chromatography purified via peptide column.
Clonality	Polyclonal
Isotype	IgG
Physical State	Liquid
Buffer	PGAM5 Antibody is supplied in PBS containing 0.02% sodium azide
Concentration	1 mg/mL
Storage Conditions	PGAM5 antibody can be stored at 4 °C for three months and -20 °C, stable for up to one year. As with all antibodies care should be taken to avoid repeated freeze thaw cycles. Antibodies should not be exposed to prolonged high temperatures.



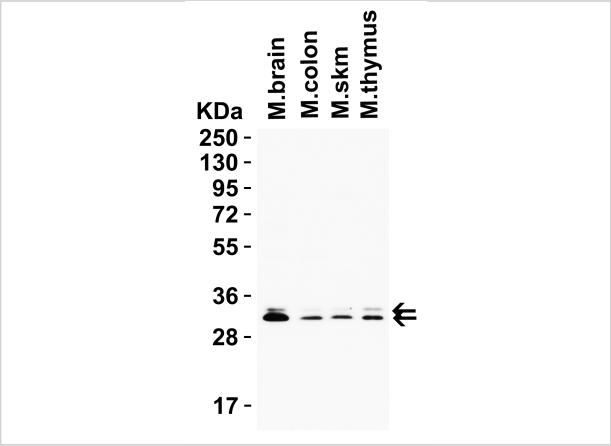
PGAM5 (CT) Antibody 1

Figure 1 Western Blot Validation in Mouse and Rat Cell Lines
Loading: 15 µg of lysates per lane. Antibodies: PGAM5, 9517 0.5 µg/mL, 1h incubation at RT in 5% NFDM/TBST. Seconda...



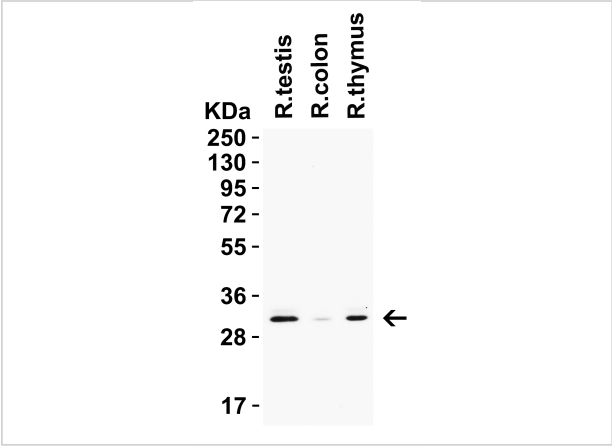
PGAM5 (CT) Antibody 2

Figure 2 Western Blot Validation in Human Cell Lines
Loading: 15 µg of lysates per lane. Antibodies: PGAM5, 9517 0.5 µg/mL, 1h incubation at RT in 5% NFDM/TBST. Secondary: Goat...



PGAM5 (CT) Antibody 3

Figure 3 Western Blot Validation in Mouse Tissues
Loading: 15 µg of lysates per lane. Antibodies: PGAM5, 9517 0.5 µg/mL, 1h incubation at RT in 5% NFDM/TBST. Secondary: Goat an...



PGAM5 (CT) Antibody 4

Figure 4 Western Blot Validation in Rat Tissues
Loading: 15 µg of lysates per lane. Antibodies: PGAM5, 9517 0.5 µg/mL, 1h incubation at RT in 5% NFDM/TBST. Secondary: Goat anti...

Disclaimer

Disclaimer	Optimal dilutions/concentrations should be determined by the end user. The information provided is a guideline for product use. This product is for research use only.
------------	------------------------------------------------------------------------------------------------------------------------------------------------------------------------

For research use only. For additional information, visit ProSci's [Terms and Conditions Page](#).