

IRGB10 (CT) Antibody

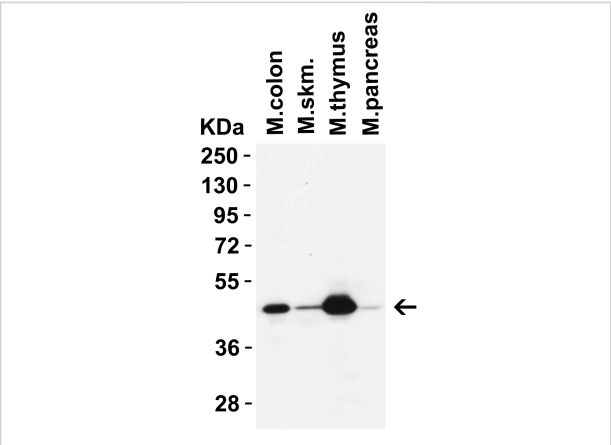
CATALOG NUMBER: 9515

Specifications

Host Species	Rabbit
Species Reactivity	Mouse
Homology	Predicted species reactivity based on immunogen sequence: Monkey (100%), Gorilla (100%)
Immunogen	Anti-IRGB10 antibody (9515) was raised against a peptide corresponding to 13 amino acids near the C-terminus of mouse IRGB10. The immunogen is located within the last 50 amino acids of IRGB10.
Conjugate	Unconjugated
Tested Applications	ELISA, IF, WB
User Note	Optimal dilutions for each application to be determined by the researcher.
Predicted Molecular Weight	Predicted: 47kD Observed: 47 kD

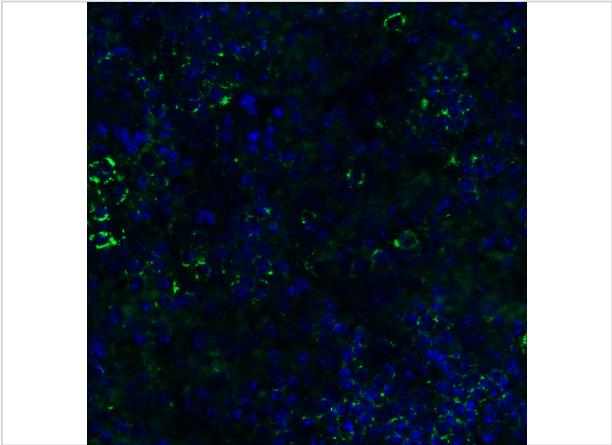
Properties

Purification	IRGB10 Antibody is affinity chromatography purified via peptide column.
Clonality	Polyclonal
Isotype	IgG
Physical State	Liquid
Buffer	IRGB10 Antibody is supplied in PBS containing 0.02% sodium azide.
Concentration	1 mg/mL
Storage Conditions	IRGB10 antibody can be stored at 4°C for three months and -20°C, stable for up to one year. As with all antibodies care should be taken to avoid repeated freeze thaw cycles. Antibodies should not be exposed to prolonged high temperatures.



IRGB10 (NT) Antibody 1

Figure 1 Western Blot Validation In Mouse Tissues
Loading: 15 µg of lysates per lane. Antibodies: IRGB10 9515, 2 µg/mL, 1h incubation at RT in 5% NFDM/TBST. Secondary: ...



IRGB10 (NT) Antibody 2

Figure 2 Immunofluorescence Validation of IRGB10 in Mouse Spleen
Immunofluorescent analysis of 4% paraformaldehyde-fixed mouse spleen labeling IRGB10 with 9515 at 20 µg/mL, fol...

Disclaimer

Disclaimer	Optimal dilutions/concentrations should be determined by the end user. The information provided is a guideline for product use. This product is for research use only.
------------	--

For research use only. For additional information, visit ProSci's [Terms and Conditions Page](#).