

SARS-CoV-2 (COVID-19) ORF9c Antibody

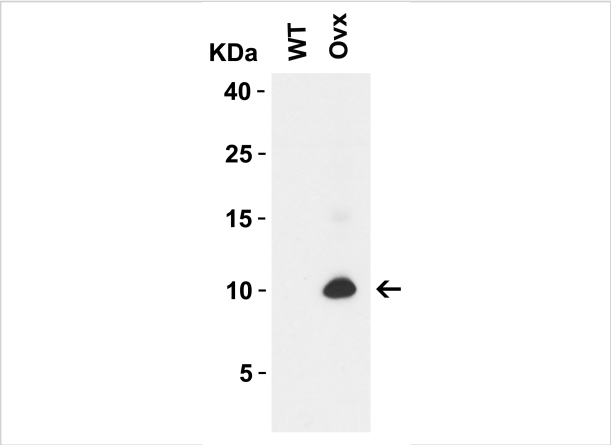
CATALOG NUMBER: 9291

Specifications

Host Species	Rabbit
Species Reactivity	Virus
Immunogen	Anti-SARS-CoV-2 (COVID-19) ORF9c antibody (9291) was raised against a peptide corresponding to 16 amino acids near the amino-terminus of SARS-CoV-2 (COVID-19) ORF9c protein. The immunogen is located within the first 50 amino acids of the SARS-CoV-2 (COVID-19) ORF9c protein.
Conjugate	Unconjugated
Tested Applications	ELISA, WB
User Note	Optimal dilutions for each application to be determined by the researcher.
Specificity	ORF9c Antibody is predicted to not cross-react with other coronavirus family members.
Predicted Molecular Weight	8kD

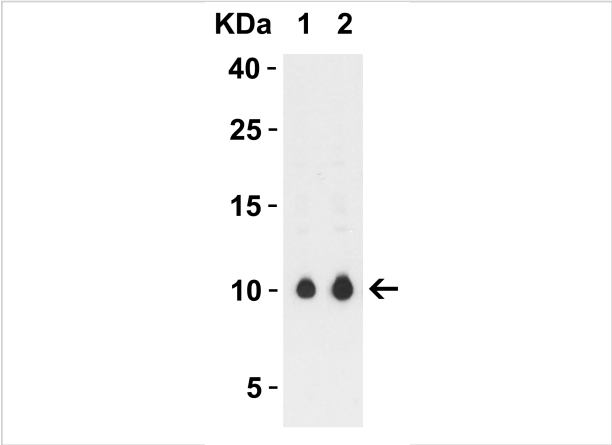
Properties

Purification	SARS-CoV-2 (COVID-19) ORF9c Antibody is affinity chromatography purified via peptide column.
Clonality	Polyclonal
Isotype	IgG
Physical State	Liquid
Buffer	SARS-CoV-2 (COVID-19) ORF9c antibody is supplied in PBS containing 0.02% sodium azide.
Concentration	1 mg/mL
Storage Conditions	SARS-CoV-2 (COVID-19) ORF9c antibody can be stored at 4°C for three months and -20°C, stable for up to one year. As with all antibodies care should be taken to avoid repeated freeze thaw cycles. Antibodies should not be exposed to prolonged high temperatures.



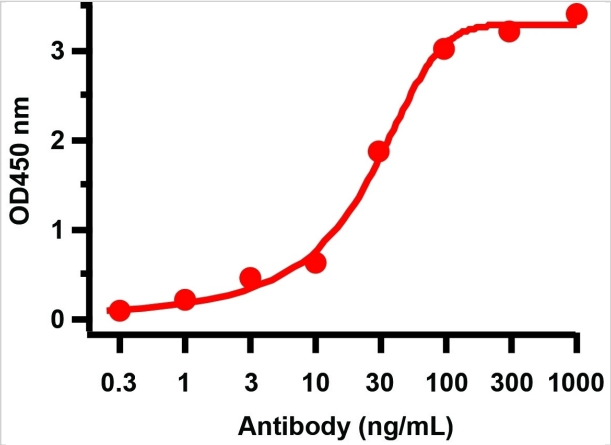
SARS-CoV-2 (COVID-19) ORF9c Antibody 1

Figure 1 Western Blot Validation with SARS-CoV-2 (COVID-19) ORF9c Overexpressed 293 Cells
 Loading: 10 µg per lane of 293 cell lysate from WT and SARS-CoV-2 (COVID-19) ORF9c tran...



SARS-CoV-2 (COVID-19) ORF9c Antibody 2

Figure 2 Western Blot Validation with SARS-CoV-2 (COVID-19) ORF9c Overexpressed 293 Cells
 Loading: 10 µg per lane of 293 cell lysate from WT and SARS-CoV-2 (COVID-19) ORF9c tran...



SARS-CoV-2 (COVID-19) ORF9c Antibody 1

Figure 3 ELISA Validation
 Antibodies: SARS-CoV-2 (COVID-19) ORF9c Antibody, 9291. A direct ELISA was performed using SARS-CoV-2 ORF9c immunogen peptide (9291P)) as coating anti...

Disclaimer

Disclaimer	Optimal dilutions/concentrations should be determined by the end user. The information provided is a guideline for product use. This product is for research use only.
-------------------	--

For research use only. For additional information, visit ProSci's [Terms and Conditions Page](#).